



# Petnet SmartFeeder SF10E 12 Pin Connector Replacement

If you have charging issues with the Petnet SmartFeeder SF10E, replace your damaged or stuck 12 pin connector to ensure a tight fit on your SmartBowl.

Written By: Ashley Kim



## INTRODUCTION

Use this guide to replace your 12 pin connector if it is damaged and does not charge properly. When replacing the component, use a Phillips #1 screwdriver and iFixit Opening Tools to proceed with the replacement.

---



### TOOLS:

- [Phillips #1 Screwdriver](#) (1)
  - [iFixit Opening Tools](#) (1)
-

## Step 1 — 12 Pin Connector



- Eject the SmartBowl by pressing the button located at the front of the SmartFeeder base.

## Step 2



- Remove the food tub by twisting it counter-clockwise with both hands and lifting it up.

### Step 3



- Remove the black plastic gasket from the top of the SmartFeeder by placing your fingers on the side of it and lifting up.
- ⓘ It should come off easily.

### Step 4



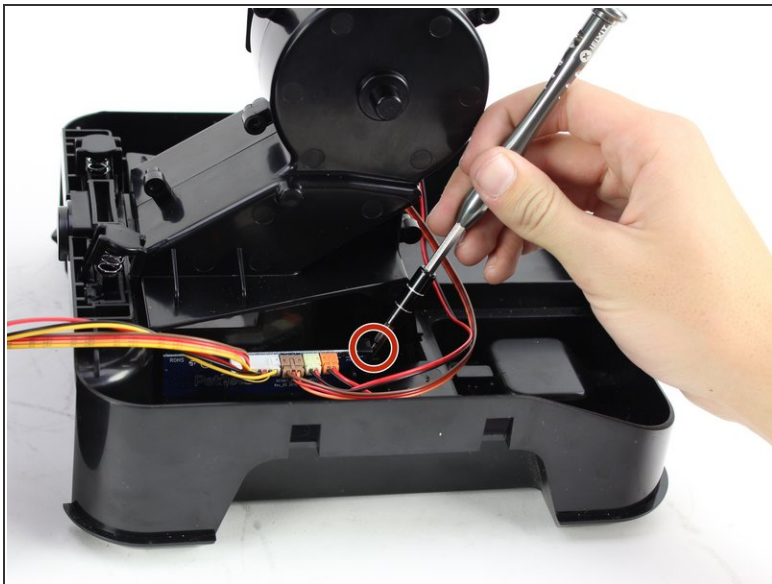
- Flip over the SmartFeeder by using both hands.
- Partially open the outer case of the SmartFeeder by wedging an iFixit Opening Tool on each side.

## Step 5



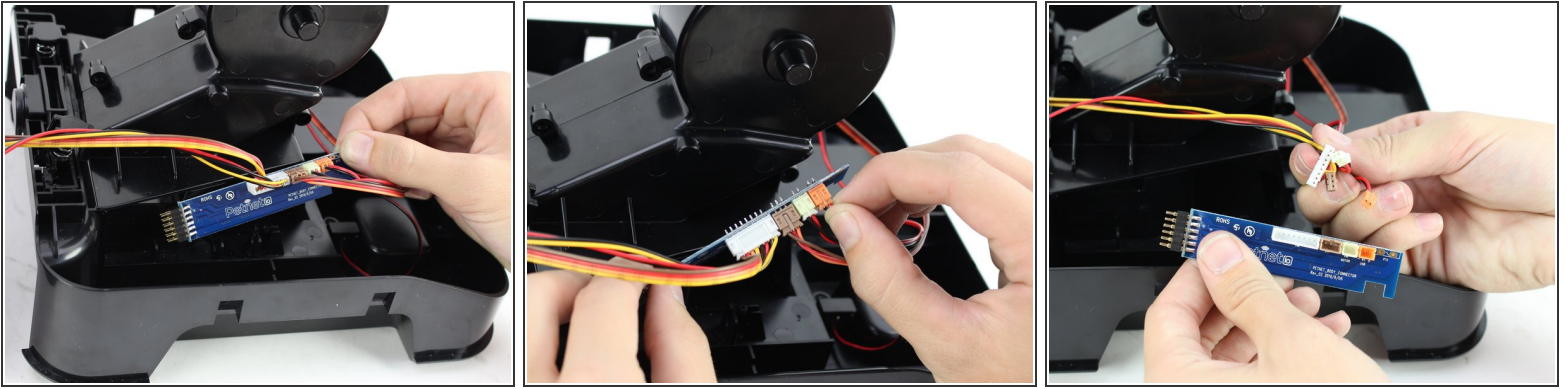
- Turn the SmartFeeder on its side and with one hand on the base, carefully pull out the central section.
- Place the bottom piece of the device right-side up.

## Step 6




- Remove one 10 mm screw by using the Phillips #1 screwdriver.
- ⓘ Remove the plastic retaining piece for the daughterboard by pulling it out with one hand.

## Step 7



- Pull the daughterboard out of the device and remove the three-prong connectors by using your hands.

 Hold onto the sockets on the motherboard or you could accidentally pull off the entire assembly.

To reassemble your device, follow these instructions in reverse order.

This document was last generated on 2019-01-06 03:38:35 PM.