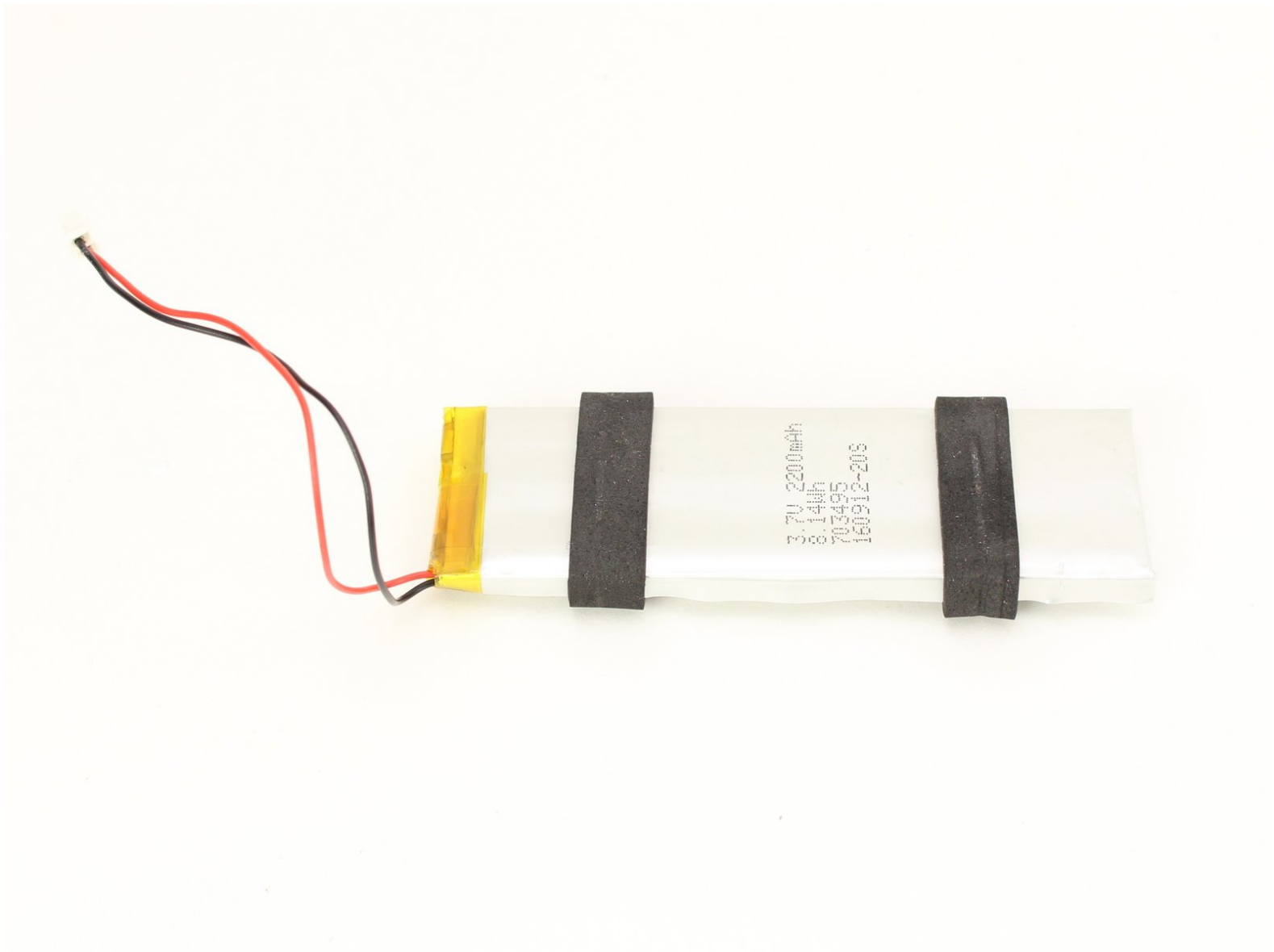




Petnet SmartFeeder SF10E Battery Replacement

Replace the internal battery of the Petnet SmartFeeder SF10E to charge your SmartFeeder or get rid of low battery warnings.

Written By: Kristin Villanueva



INTRODUCTION

Use this guide to replace the battery for your SmartFeeder to get your device up and running again. This guide is also a prerequisite to access and replace the motherboard and charging assembly.

TOOLS:

- [Tweezers](#) (1)
 - [Phillips #1 Screwdriver](#) (1)
-

Step 1 — Battery



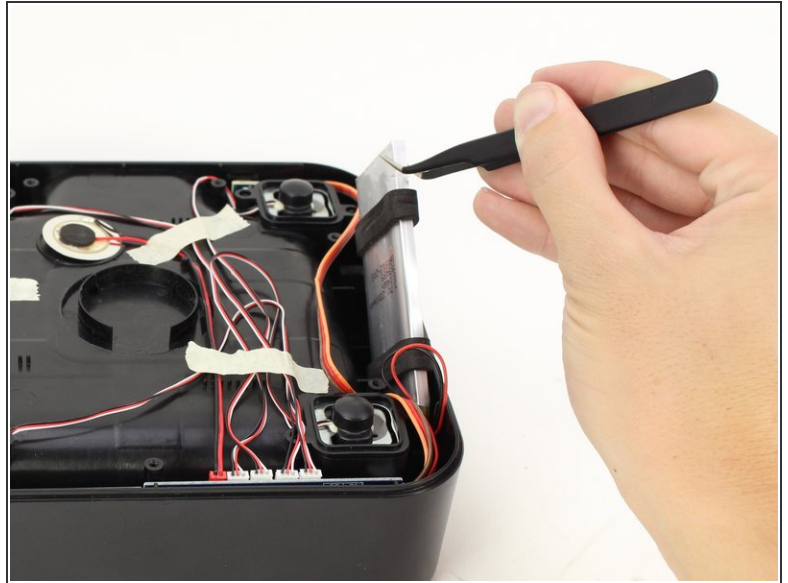
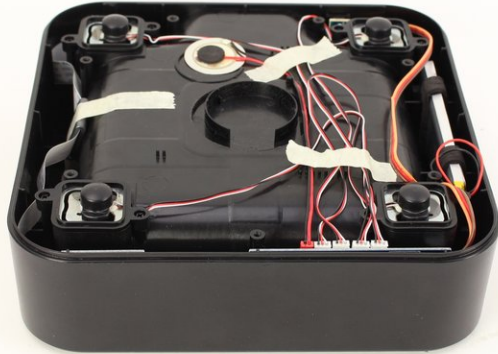
- Eject the SmartBowl by pressing the button located at the front of the SmartFeeder base.
- Remove the metal tray by using both hands and pulling out the bowl towards you.

Step 2



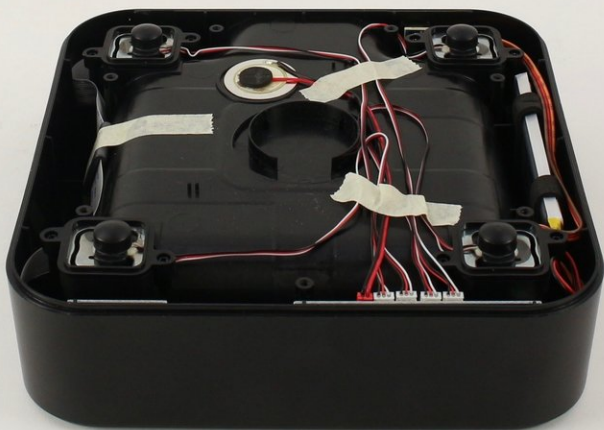
- Turn the bowl tray side down by using both hands.
- Remove seven 11 mm screws by using the Phillips #1 screwdriver.

Step 3



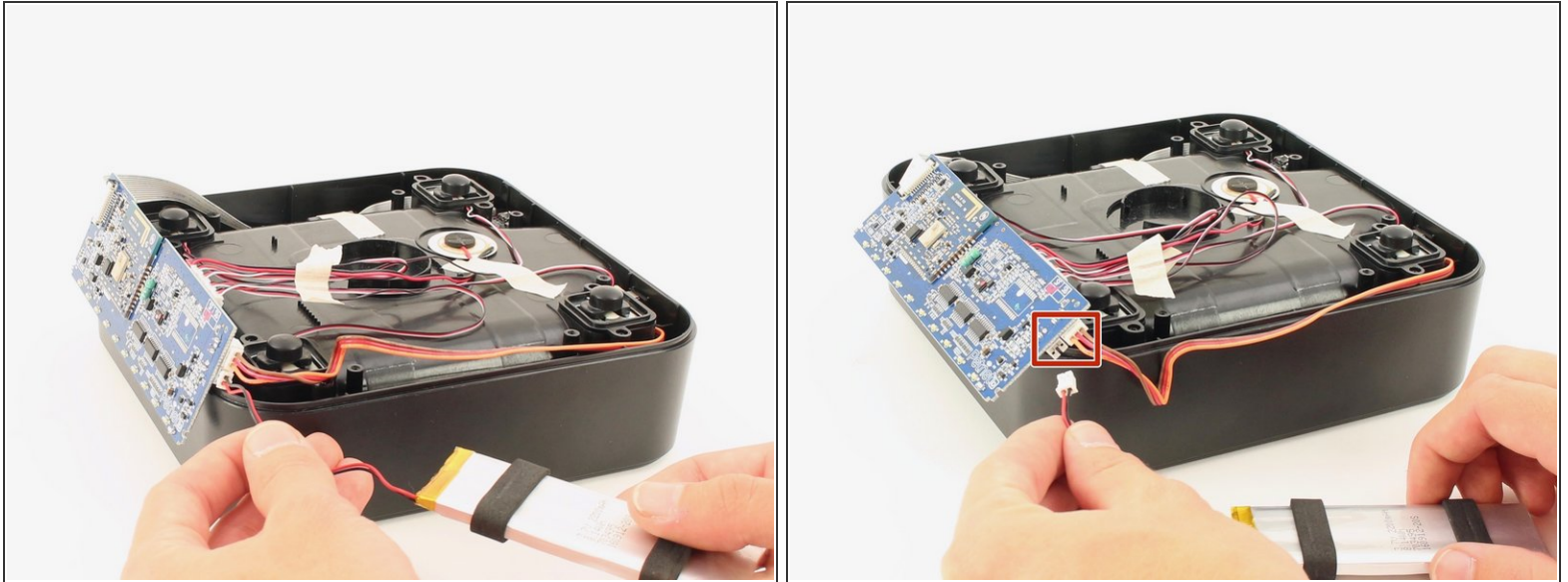
- Take the battery out of the SmartBowl with tweezers, avoid pulling on any wires.
- ⓘ Hold the SmartBowl down using one hand while using the other hand to remove the battery.


Step 4



- Remove the tape, closest to the four white connectors, with your hands.
- ☑ Keep the wires attached to the tape for easy reassembly.

Step 5



- Trace the wires with your hands from the battery to the motherboard.
 - Detach the three-prong connector between the battery and the motherboard by pulling the white connectors with your hands.
-  Hold on to the sockets on the motherboard or you could accidentally pull off the entire assembly.

To reassemble your device, follow these instructions in reverse order.

This document was last generated on 2019-07-16 07:04:43 AM.