



Lenovo IdeaPad P500 Bottom Panel Replacement

Remove the bottom panel of the Lenovo IdeaPad P500 to allow access to the inside of the laptop.

Written By: Joel Hottman



INTRODUCTION


This guide will provide instructions to remove the bottom case of the laptop. This is the first step in replacing most of the parts in this computer.

TOOLS:

- [Phillips #0 Screwdriver](#) (1)
 - [Spudger](#) (1)
-

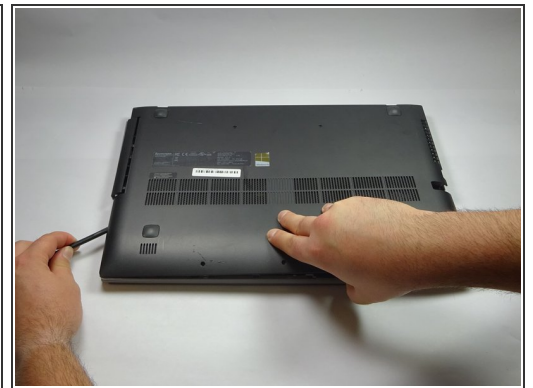
Step 1 — Bottom Panel




 Turn off laptop before beginning.


- Remove the five 5.0 mm Phillips #0 screws marked in this picture.

Step 2



- Use the spudger to separate the bottom panel from the laptop case.

 It is recommended that you start from a corner and work your way around the panel.

 Be careful not to bend or break the bottom panel.

Step 3



- Lift up the right side of the case as shown, and slide it to the left to detach the case.
- ⓘ The disk drive will remain attached to the bottom panel. Sliding the panel to the left disconnects it.
- ⚠ To avoid damaging the disk drive connector, avoid lifting the right side of the panel too far up.

To reassemble your device, follow these instructions in reverse order.

This document was last generated on 2019-01-05 04:03:00 PM.