



Samsung Galaxy Tab E 8.0 Back Camera Replacement

Replacing the rear camera on the back of the Samsung Galaxy Tab E 8.0. Model of device is SM-T377V.

Written By: Chrissy B



This document was generated on 2019-09-16 03:16:54 PM (MST).

INTRODUCTION

The rear camera of the Samsung Galaxy Tab E 8.0 can be damaged if the camera is struck by a hard object. This guide shows how to replace the tablet's rear camera, which is attached to the motherboard.

TOOLS:

- [iFixit Opening Tools](#) (1)
 - [Tweezers](#) (1)
-

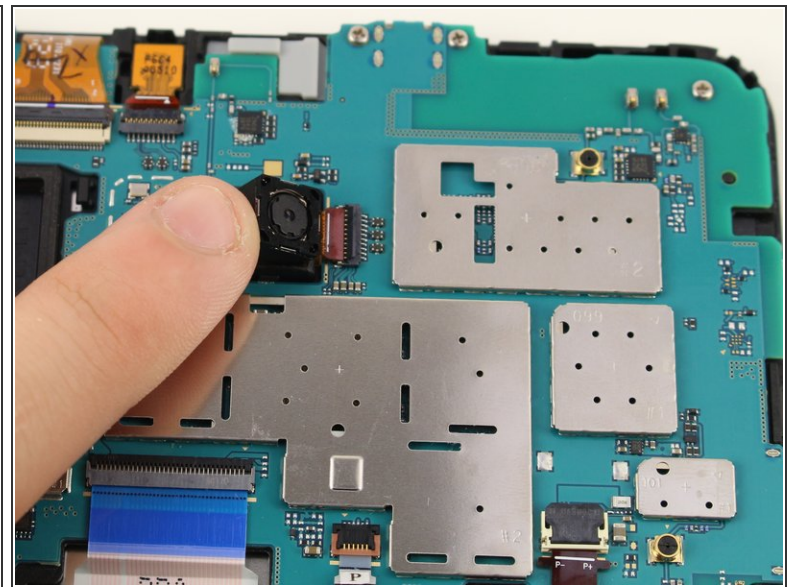
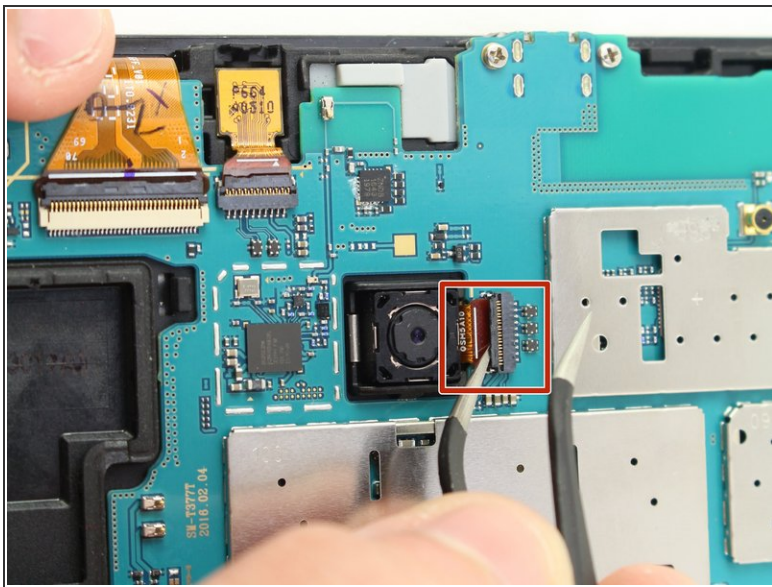
Step 1 — Back Panel



- Use the iFixit Opening Tool to pry off the back case, moving the tool around the screen.

⚠ Make sure the device is off and the SD card is removed before taking off the back casing.

Step 2 — Back Camera



- Use the tweezers to lift the switch connecting the back camera to the motherboard.
- Use your hand to remove the back camera from the motherboard.

To reassemble your device, follow these instructions in reverse order.