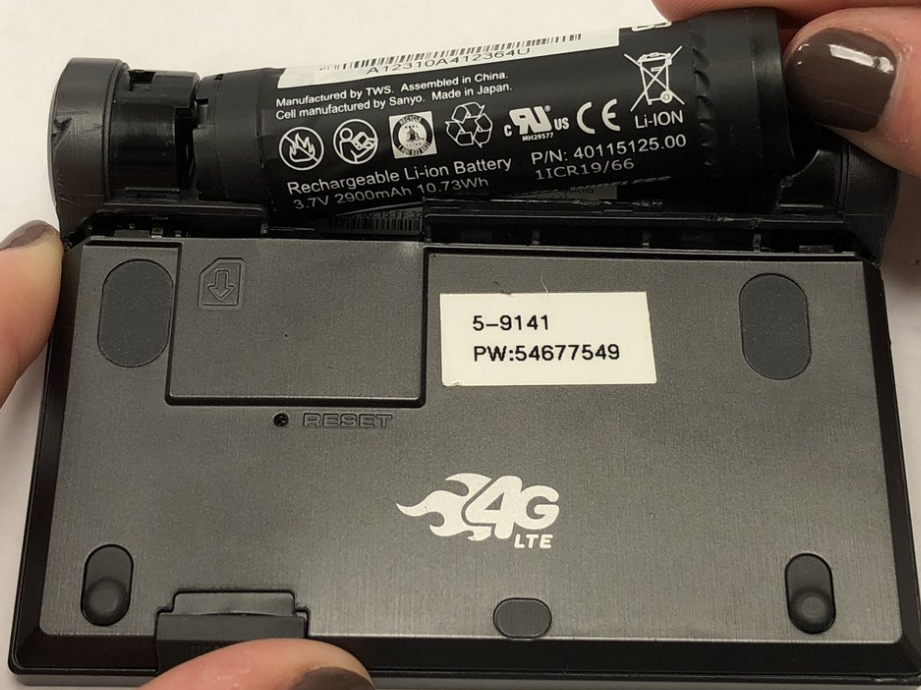




Novatel MiFi 2 4G LTE Hotspot Battery Replacement

Replace a faulty battery for your Novatel hotspot device.

Written By: GerardFoley



INTRODUCTION

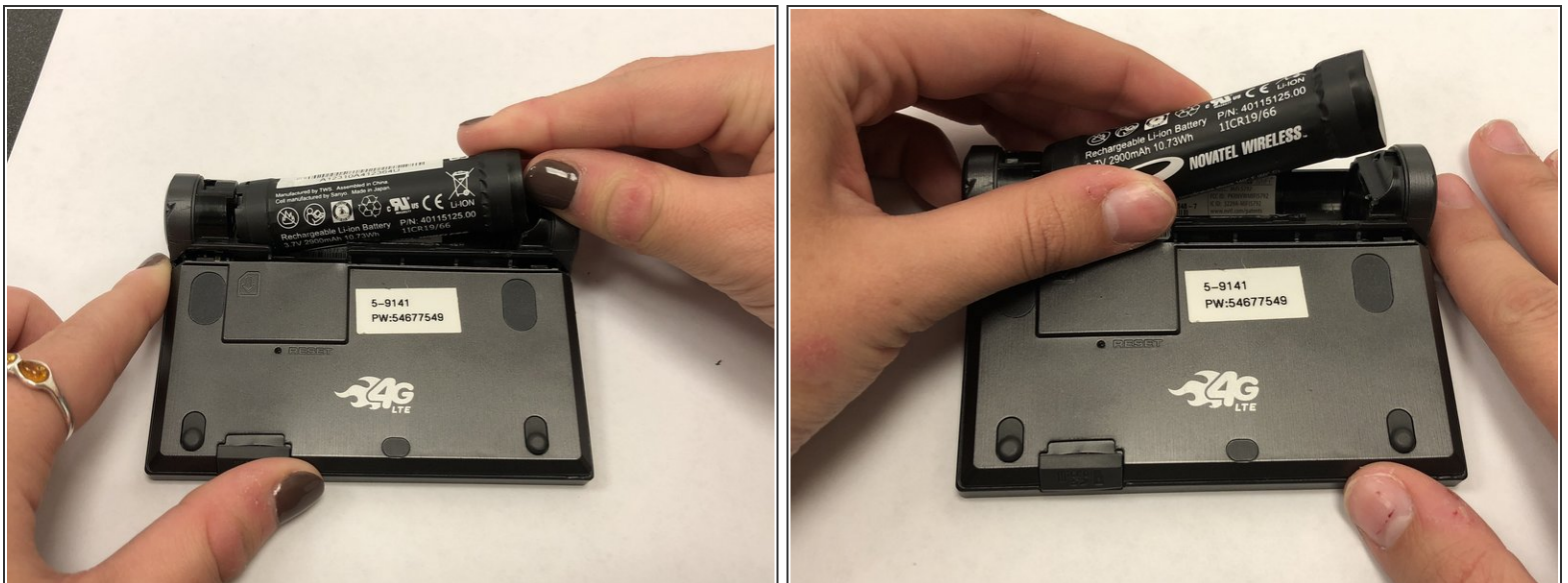
Use this guide to replace a dead or faulty battery in your Novatel Hotspot device. This requires you to remove the black plastic covering and remove the battery.

Step 1 — Battery Cover



- Unplug the charger from your Novatel Hotspot device.
- Place the Novatel Hotspot device face down on a flat, clean surface.
- Place your thumb under the latch of the black plastic battery cover as shown.
- ⓘ Remove the battery cover. This will require some force.

Step 2 — Battery



- Gently place your thumb on the right side of the battery as shown.
- Remove the battery from its socket by lifting it up and out.

To reassemble your device, follow these instructions in reverse order.

This document was last generated on 2019-01-14 03:16:51 PM.