



HP Color LaserJet Pro MFP M277dw Wireless Card Replacement

How do I replace the wireless card in an HP Color LaserJet Pro MFP M277dw.

Written By: Christopher Fahey



INTRODUCTION

This guide will help you replace the wireless card in an HP Color LaserJet Pro MFP M277dw. You will need a plastic opening tool and a Phillips #2 screwdriver head.

TOOLS:

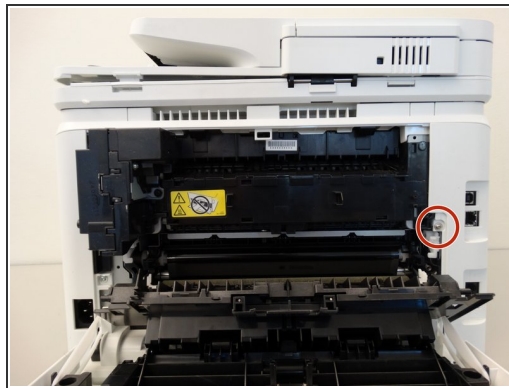
- [iFixit Opening Tools](#) (1)
 - [Phillips #2 Screwdriver](#) (1)
-

Step 1 — Wireless Card



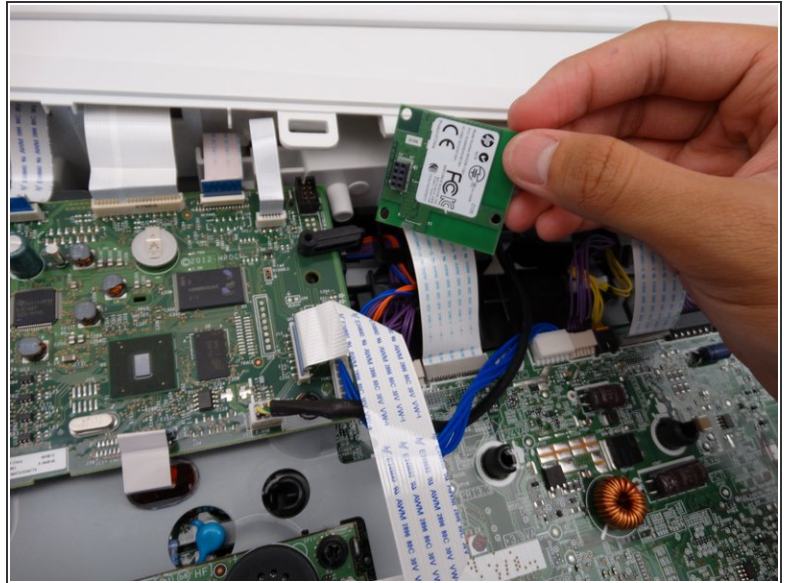
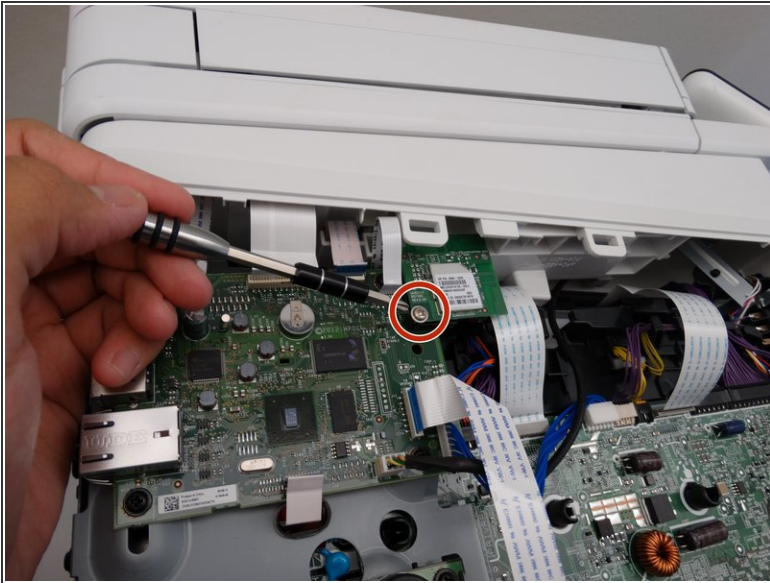
- Remove paper tray by pulling it straight out.
- ⓘ The tray should just slide out with little to no resistance.

Step 2



- Lower the back panel by pulling it down from the upright position.
- Remove one Phillips #2 10mm screw.
- Use the plastic opening tool to remove the left side panel.
- ⓘ Flipping the printer onto its side makes it easier to remove the panel and access the motherboard.

Step 3



- Remove one Phillips #2 11mm screw.
- Remove the wireless card.
- ⓘ The wireless card is connected to the circuit board with pins, it will take a bit of force to remove it.

To reassemble your device, follow these instructions in reverse order.

This document was last generated on 2018-12-11 10:32:00 PM.