



Hover-1 H1 Bottom Shell Replacement

How to replace the bottom shell of your Hover-1 H1 hoverboard. This removal is the first step to replace every part of your hoverboard.

Written By: Madeline David



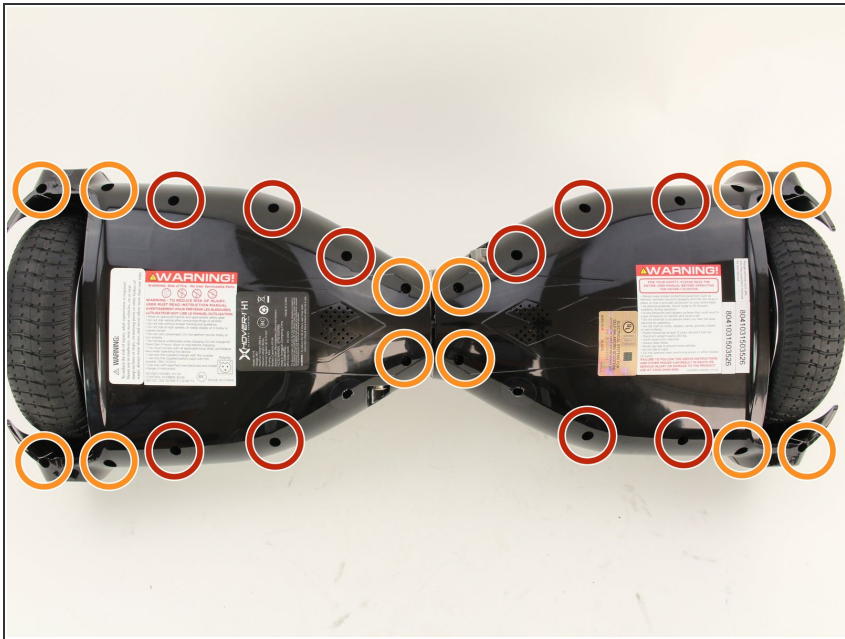
INTRODUCTION

This guide explains how to remove the bottom shell of your hoverboard, which will allow you to gain access to most of the device's internals.

TOOLS:

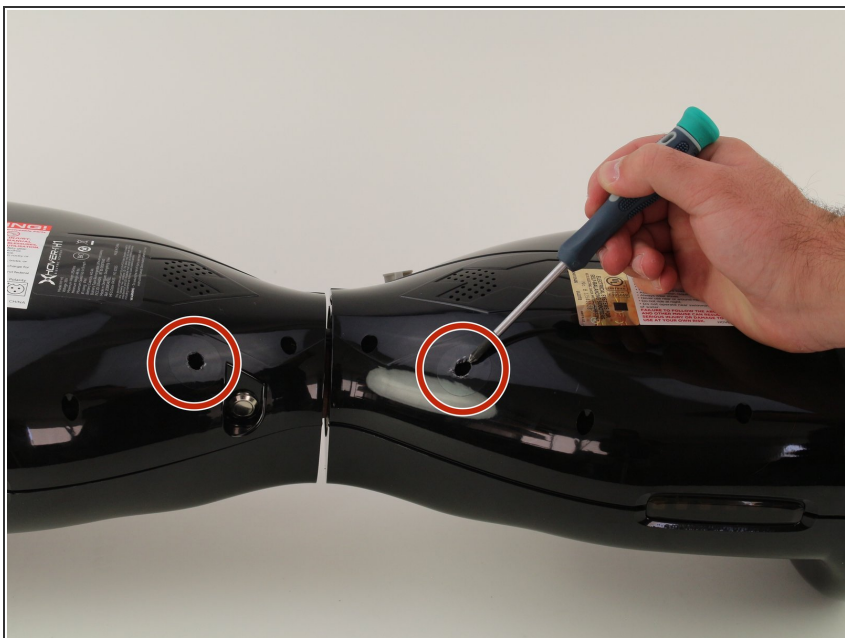
- [Phillips #2 Screwdriver](#) (1)
-

Step 1 — Bottom Shell



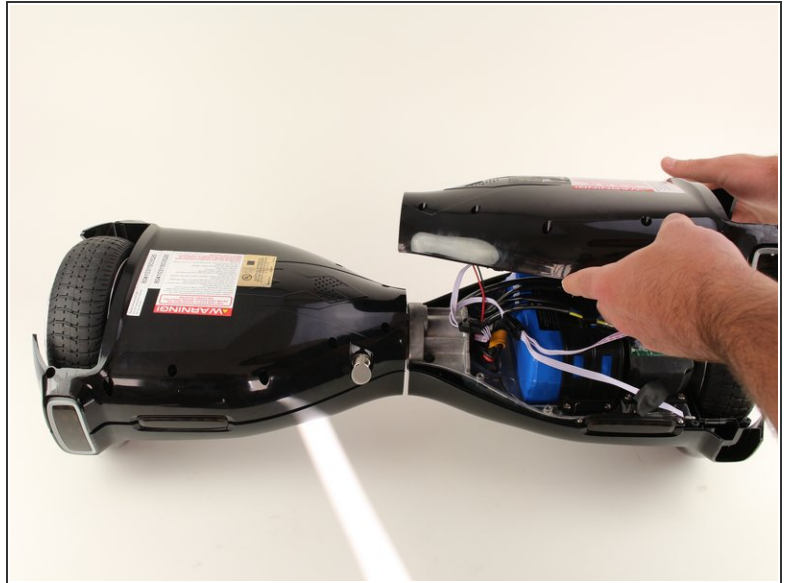
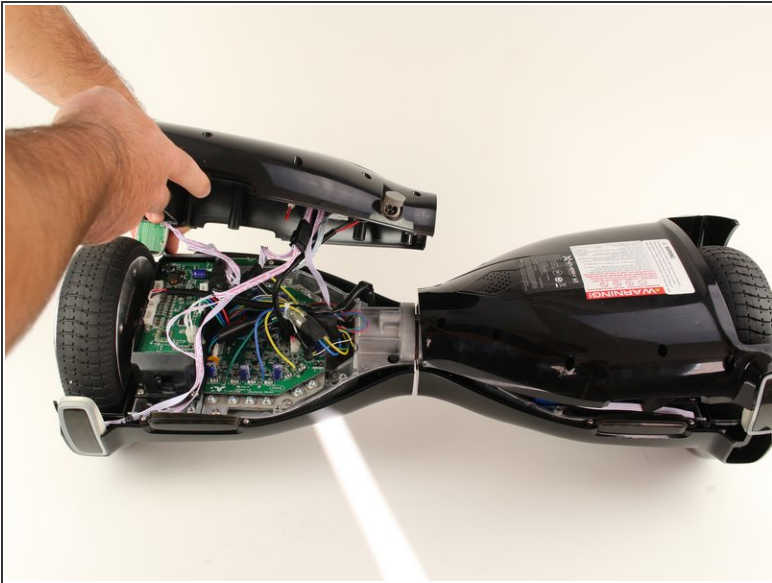
- Remove the ten 9mm machine screws by using a long Phillips #2 screwdriver to rotate the screws counterclockwise.
- Remove the twelve 9mm sheet metal screws by using a long Phillips #2 screwdriver to rotate the screws counterclockwise.

Step 2



- Puncture the two black stickers by using the tip of a screwdriver.
- Remove the two 9mm machine screws by using a long Phillips #2 screwdriver to rotate the screws counterclockwise.

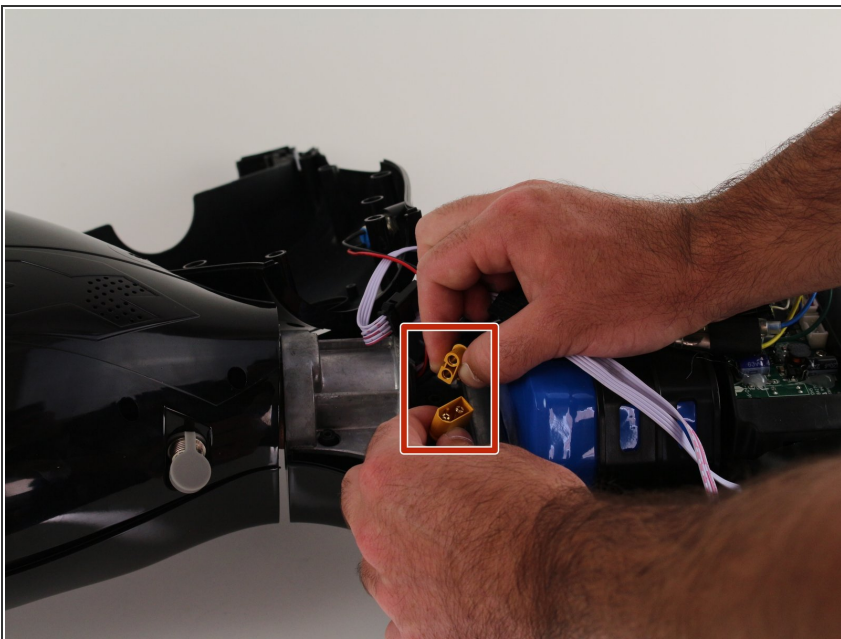
Step 3



- Lift each side of the bottom shell by pulling up.

⚠ When lifting the shell, take care to not tear any cables from their connectors.

Step 4



- Unplug the battery by pulling gently on both sides of the orange connector.

To reassemble your device, follow these instructions in reverse order.

This document was last generated on 2019-08-21 12:25:40 AM.