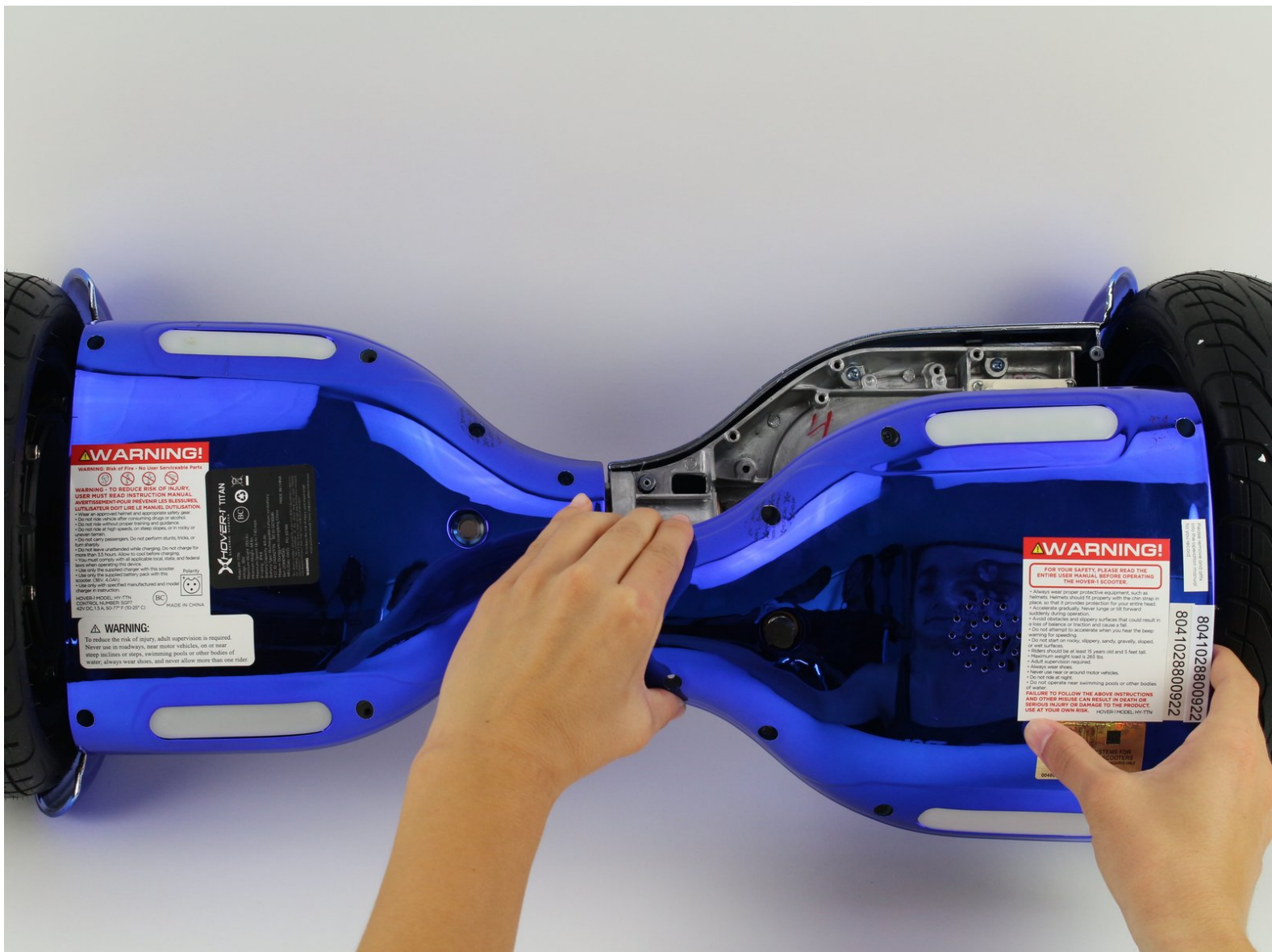




# Hover-1 Titan Bottom Left Panel Replacement

How to replace the bottom left panel of the Hover-1 Titan.

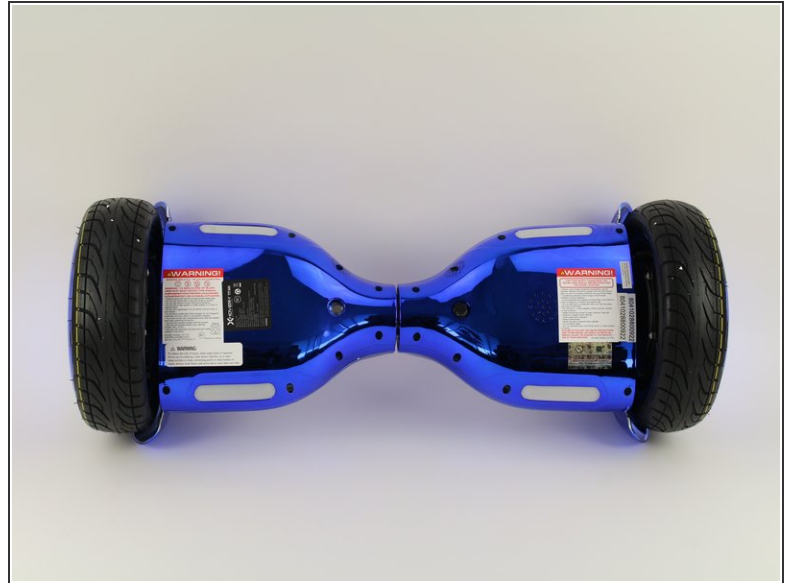
Written By: Dana Ebe



## **TOOLS:**

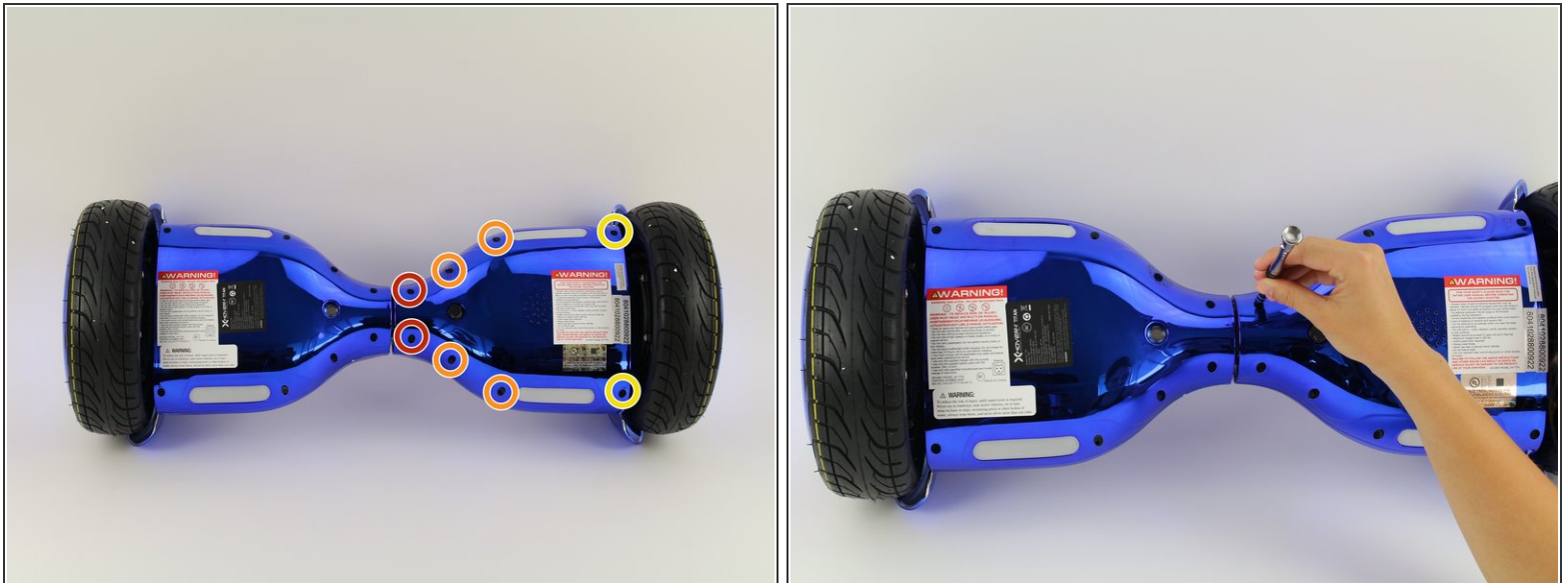
- [Phillips #1 Screwdriver](#) (1)
-

## Step 1 — Bottom Left Panel



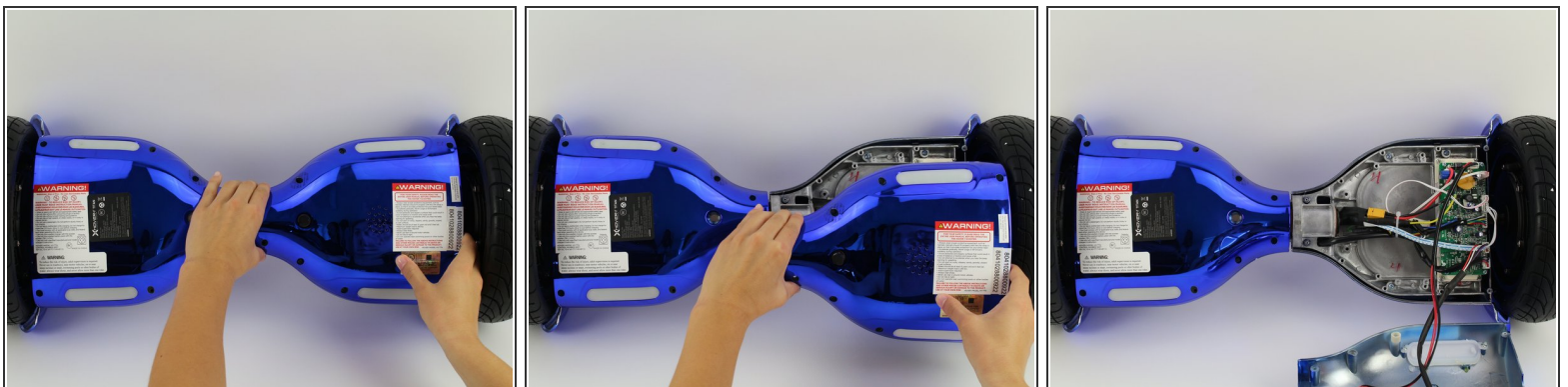
- Flip the hoverboard so the bottom is facing up.
- ⓘ The left side is the side that has the charge port. There is also an "L" on the metal plate underneath the wires.

## Step 2



- Using a Phillips #1 screwdriver, remove the two 14 mm screws located closest to the center of the hoverboard.
- Using a Phillips #1 screwdriver, remove the four 12 mm screws located in the middle of the panel.
- Using a Phillips #1 screwdriver, remove two 15 mm screws located closest to the wheel.

## Step 3



- Grip the bottom left panel and lift up to remove.

To reassemble your device, follow these instructions in reverse order.