



GD Midea FT30-3D AC Power Cord Replacement

Replacing the AC power cord in the fan.

Written By: Chris Hartley



 **TOOLS:**

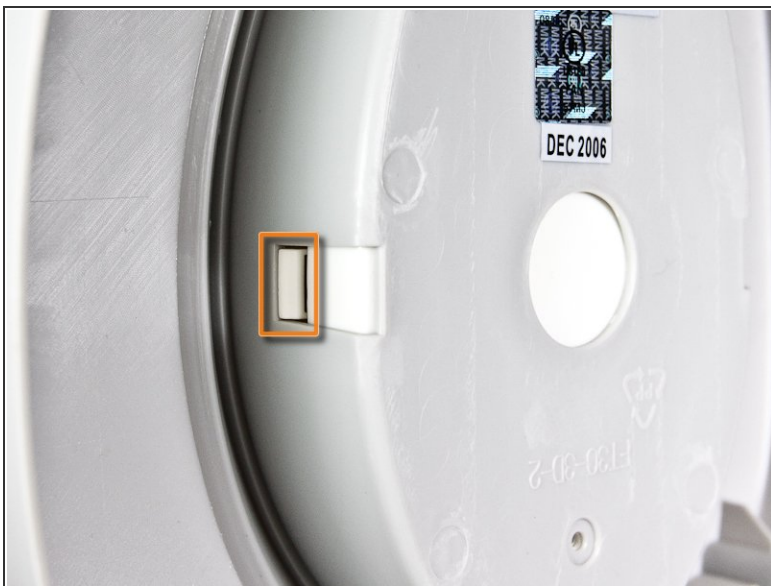
- Phillips #1 Screwdriver (1)
 - Spudger (1)
-

Step 1 — Bottom Base



- Locate and remove the 14.5 mm Phillips #1 screw on the bottom of the fan base.

Step 2



- Locate the gray base support release tabs found on either side pictured in the first image.
 - ⓘ There are release tabs on each side of the base.
- Press both release tabs in with the tip of your fingers and pull the gray base support until the tabs are cleared.

Step 3



- Continue removing the gray base support by pressing your thumb into the circular opening in the base and pulling with your fingers on the back side.
- **Notice** that on the internal front tip of the base there is a tab. Because of this tab the back end will pivot off at that point.

Step 4



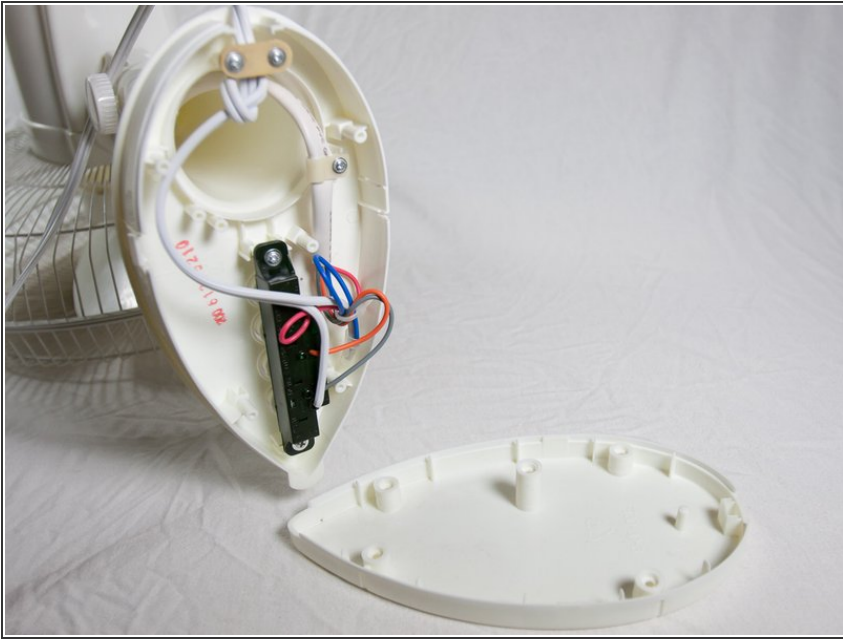
- After the base has separated more it will be easy to fully remove it. Continue pulling the back edge of the gray base support, rotating it around the front tab until it comes off completely.

Step 5



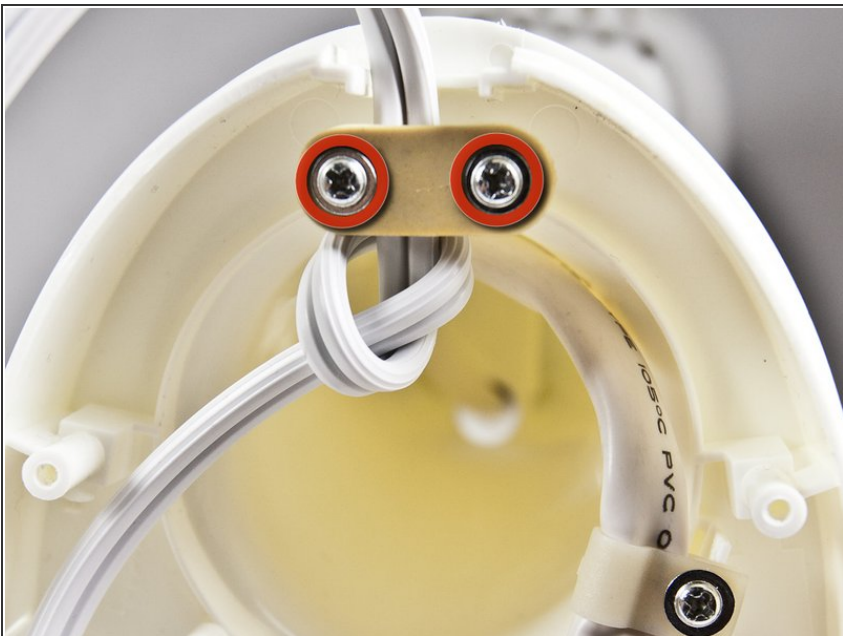
- Remove the following five 14.5 mm Phillips #1 screws found on the bottom.
- ⓘ All of the screws are recessed by 17.5 mm, so ensure your screwdriver can reach that far.

Step 6



- Once all five screws have been removed the base cover should fall right off with out any effort.
- ⚠ When putting the base cover back on; be careful to make sure that none of the wires are pinched.

Step 7 — AC Power Cord



- Remove the two 15 mm Phillips screws on the retention plate.
- ⓘ The tan retention plate will fall off once the screws are removed.

Step 8



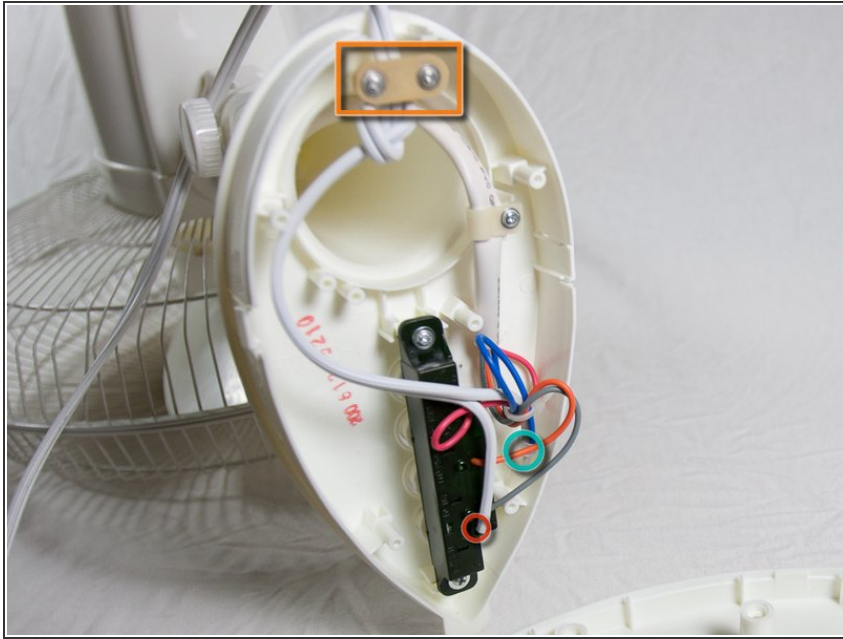
- Take the 1.5 mm Flathead Screwdriver, or any thin elongated tool that fits into the semi-circular holes along side the AC power cord white wire. Press into the hole gently to release the grip on the wire.
- ⚠ The AC power cord wire should release with ease if done properly.

Step 9



- Cut the existing cable tie bundling the other AC power cord, red, orange, gray, and blue wires together.
- Remove or cut the crimp connector connecting the blue wire and the AC power cord wire.

Step 10 — AC Power Cord



- Take the new AC power cord and follow the steps in reverse order.
- ⓘ It will help to use a soldering iron to solder the tip of the wire that gets inserted into the power/speed switch.
- ☞ You may need a new cable tie and wire terminator with the new power cord.

To reassemble your device, follow these instructions in reverse order.