



CygoLite Night Rover Light Bulb Replacement

This guide provides instructions on how to replace the light bulbs in the CygoLite Night Rover.

Written By: Kelly



INTRODUCTION

The light bulbs on the device are prone to breakage and burn out. This guide provides information on how to replace the light bulbs.

TOOLS:

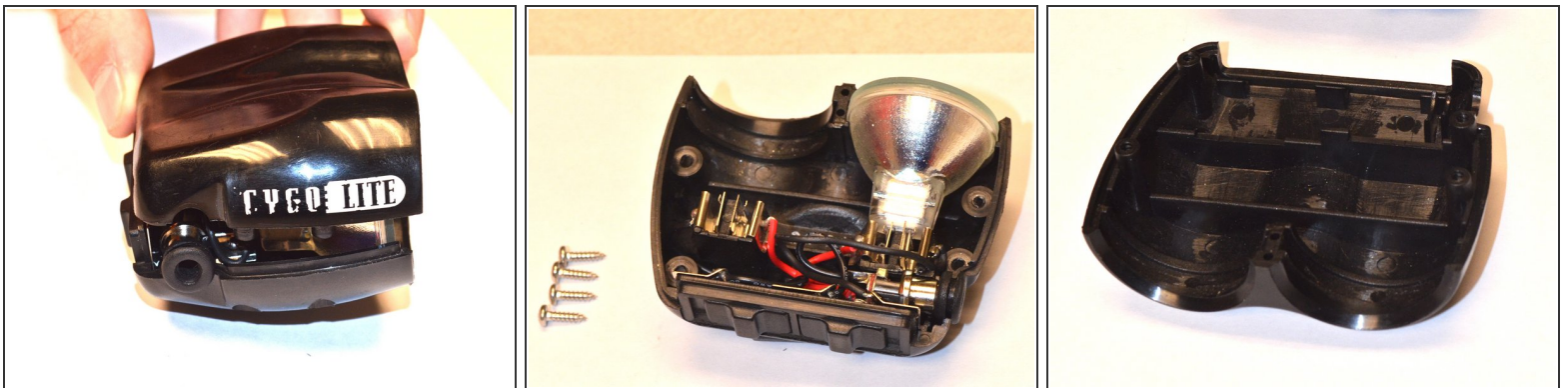
- [Phillips #0 Screwdriver](#) (1)
-

Step 1 — Light Bulb



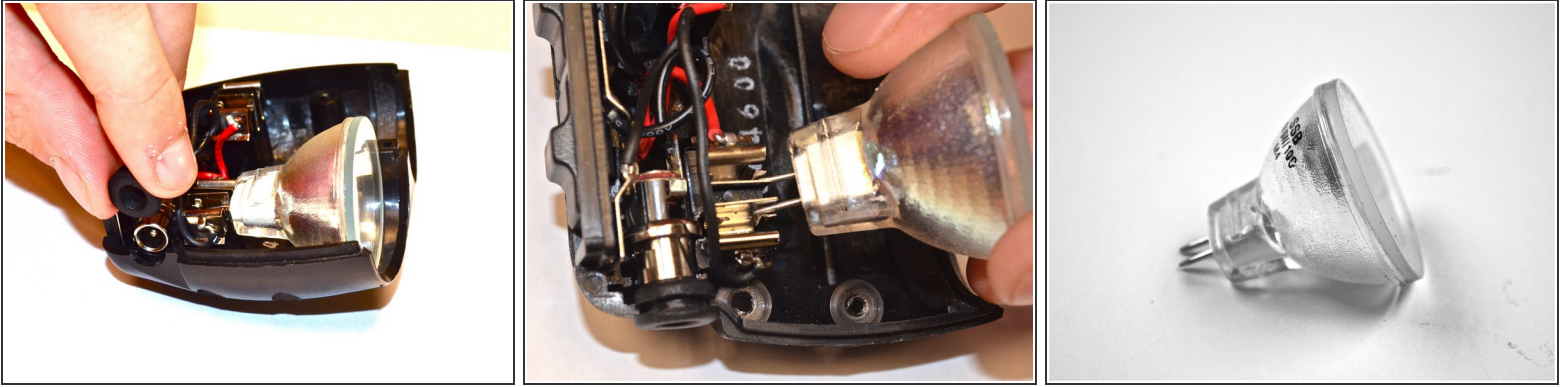
- Place the device with the bottom facing upwards.
- Using a Phillips head screwdriver remove the screws on the bottom of the device.

Step 2



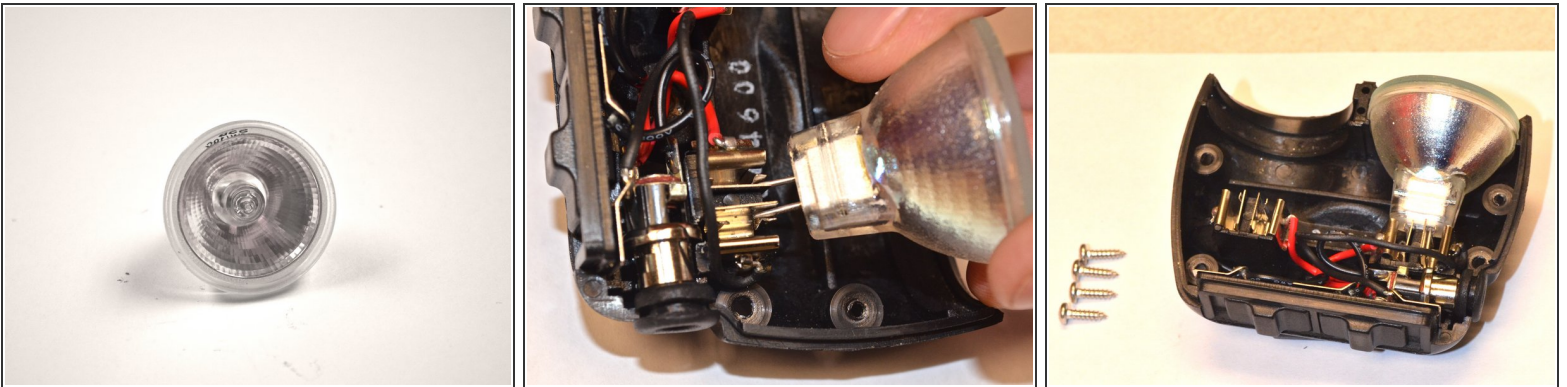
- Flip the device so that the top is facing upwards.
- Lift the top casing to expose the light.

Step 3



- Remove light out of the socket.

Step 4



- Obtain a [replacement bulb](#) and plug it into the empty socket.

To reassemble your device, follow these instructions in reverse order.

This document was last generated on 2019-08-10 03:15:04 PM.