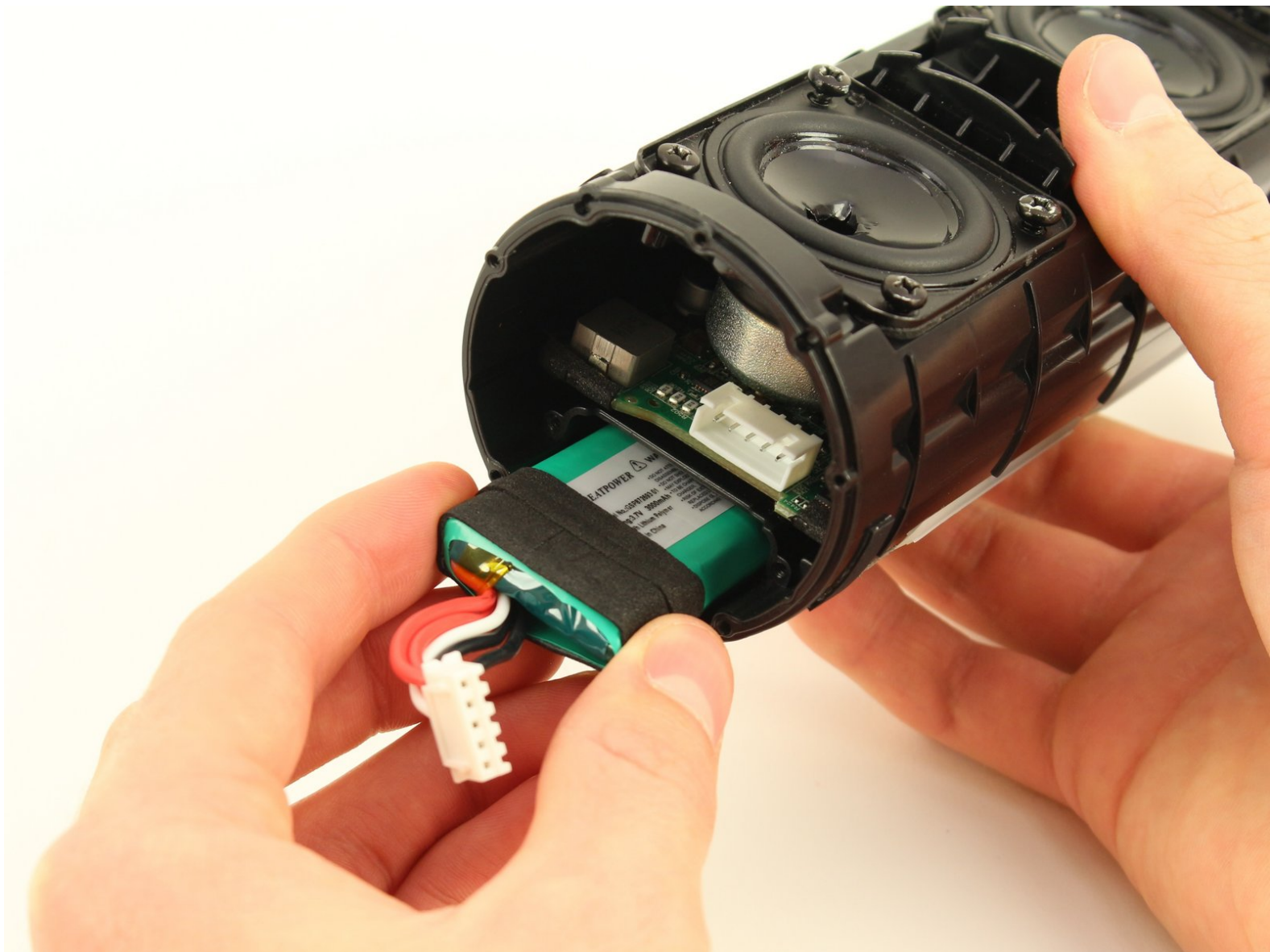




# JBL Flip 4 Battery Replacement

This guide details how to replace the battery inside the JBL Flip 4.

Written By: Philip Pang



## INTRODUCTION

Has the battery life of your device become unusable? Does the battery seem to refuse to charge? A faulty battery is possibly the cause of these power issues. As the battery undergoes more cycles, it holds less charge.



### TOOLS:

- [JIS #0 Screwdriver](#) (1)
- [iFixit Opening Tools](#) (1)
- [Phillips #0 Screwdriver](#) (1)



### PARTS:

- [JBL Flip 4 Replacement Battery](#) (1)

## Step 1 — Shell



- Insert the plastic opening tool in the crack in between the cover and the rubber spine with the power button.
- Pry off the cover, beginning with the side without the volume and bluetooth buttons.
- ⓘ When prying the cover off, the six clips (three along each side of rubber spine) that attach the cover to the speaker will make snapping sounds.
- Pull the cover off with your thumbs.

## Step 2



- Remove four 13 mm JIS #0 screws attaching the rubber spine to the speaker, located on both sides of the inside of the speaker.
  - Use the plastic opening tool to release the clips holding the central part of the rubber spine.
  - Pry away one end of the rubber spine with your thumbs and it should come off.
- i** Prying off the spine may take some persuading.
- !** The speakers are strong magnets. Keep it away from other sensitive electronics.

## Step 3 — Battery



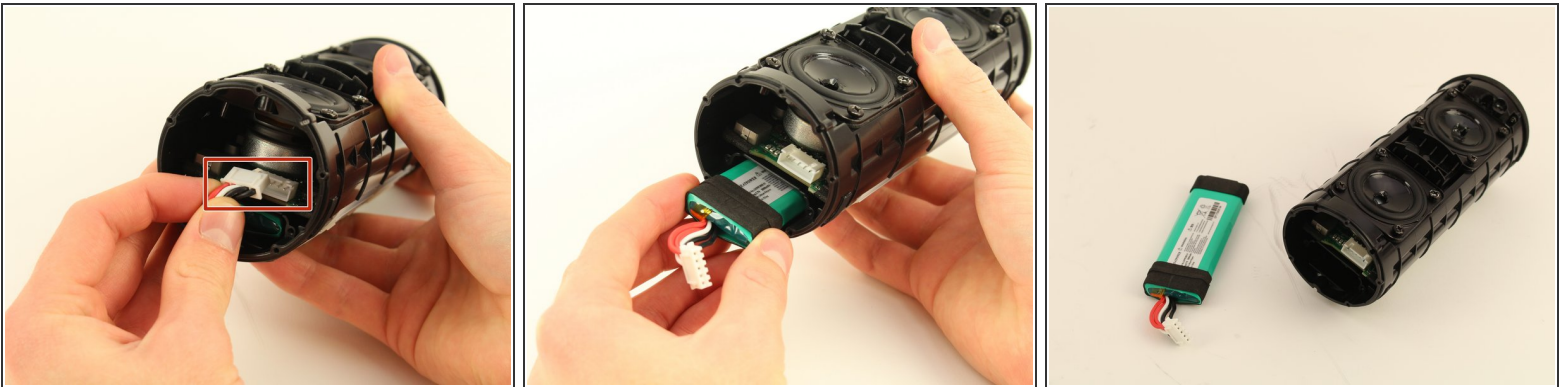
- Remove five 9mm Phillips #1 screws from the end cap opposite to the USB port.
- Pull the end cap off with your hands.

## Step 4



- Remove two 11mm Phillips #1 screws on the battery cover.
- Pull the battery cover off with your hands.

## Step 5



- Remove the large white plug that connects the wires from the battery to the main board using your hands.
- Pull the battery out with your hands.

To reassemble your device, follow these instructions in reverse order.

This document was last generated on 2019-07-13 04:26:41 PM.