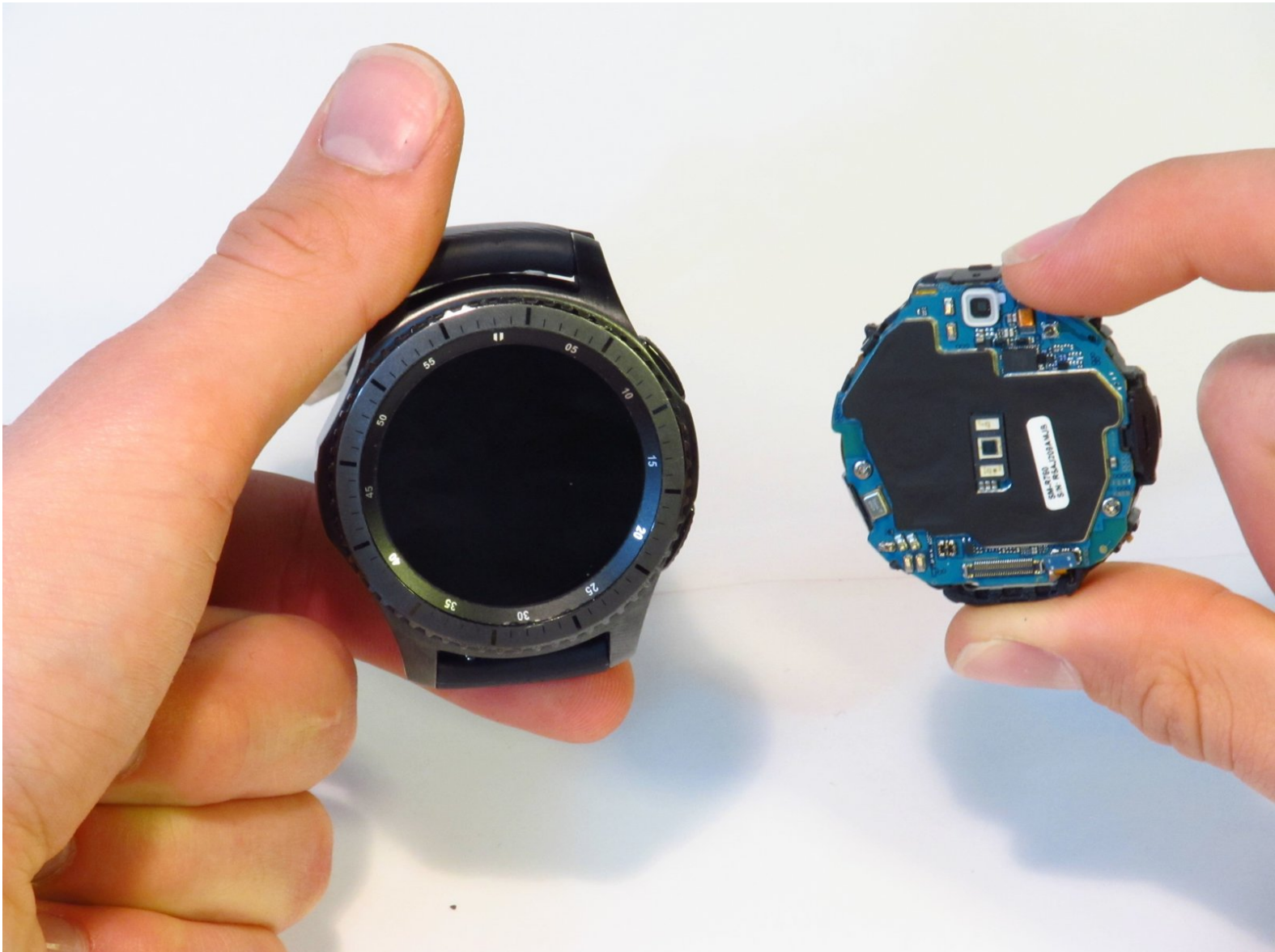




Samsung Gear S3 Frontier Front Screen Assembly Replacement

Replace a broken or unresponsive front screen for the Samsung Gear S3 Frontier.

Written By: Jimmy Algeo



INTRODUCTION

If your device's touchscreen is unresponsive or cracked, replace it with this guide. This will require you to replace the whole front screen assembly, as you can't just replace the screen itself.

TOOLS:

- [Metal Spudger](#) (1)
 - [Tri-point Y00 Screwdriver](#) (1)
 - [Spudger](#) (1)
-

Step 1 — Back Cover



- Place the watch screen-down so that its back cover is showing.

Step 2



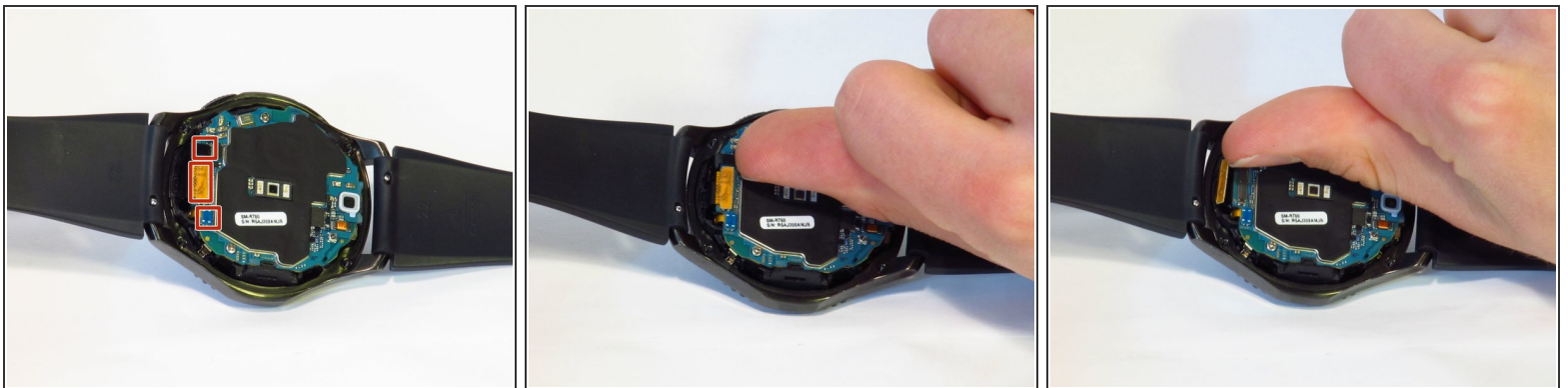
- Remove the four 4.2mm screws with a Y00 screwdriver.

Step 3



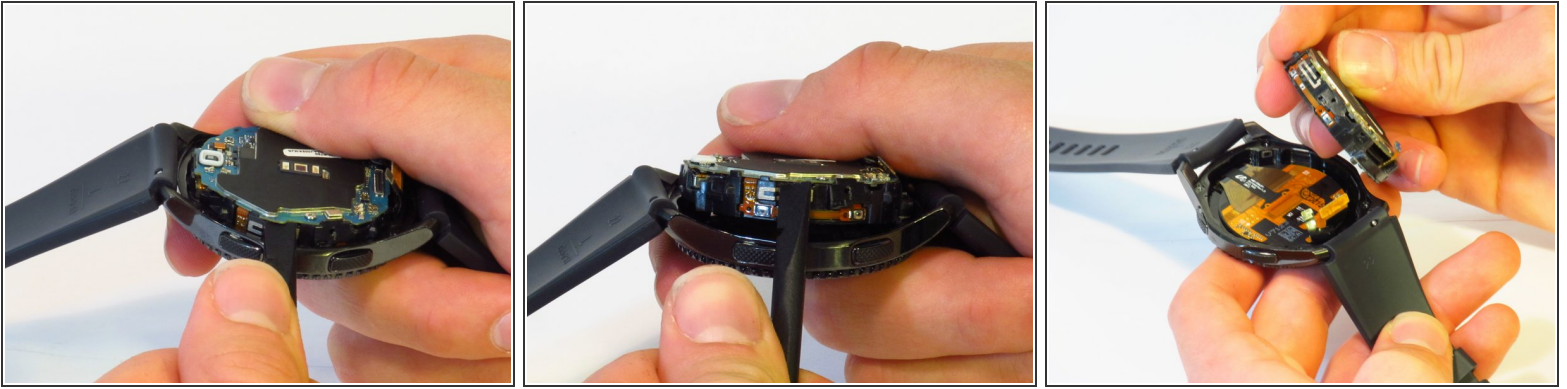
- Wedge the metal spudger in between the back cover and the frame along the seam.
- Use force to pry the back cover away from the main watch frame.
- ⓘ This step requires a lot of force. You can use a Jimmy in place of a metal spudger to make the process easier.
- ⚠ This step will ruin the water-proof seal.

Step 4 — Front Screen Assembly



- Detach the three connectors on the motherboard using your fingernail.
- ⓘ The connectors are easy to pop off. Minimal force is necessary.

Step 5



- Separate the motherboard and front screen assembly using a spudger.

To reassemble your device, follow these instructions in reverse order.

This document was last generated on 2018-12-11 10:34:36 PM.