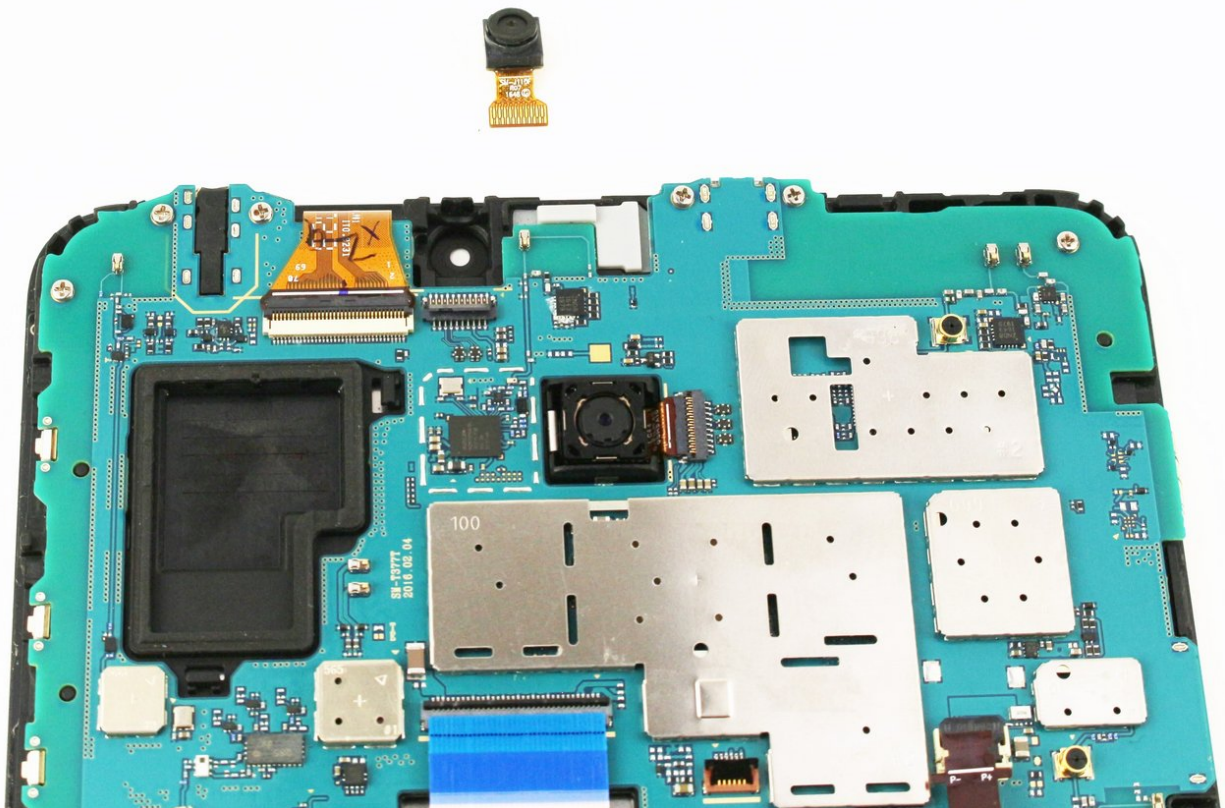




Samsung Galaxy Tab E 8.0 Front Camera Replacement

Replacing the front camera on the front of the Samsung Galaxy Tab E 8.0. Model of device is SM-T377V.

Written By: Chrissy B



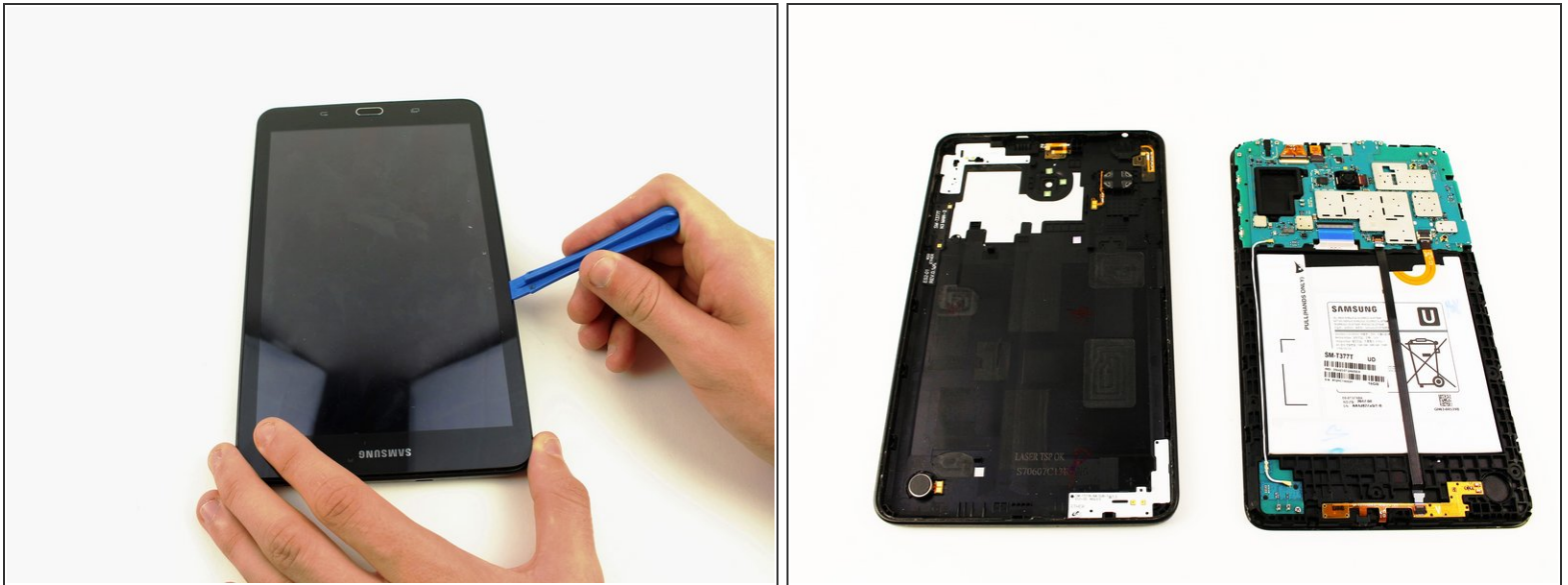
INTRODUCTION

The front camera of the Samsung Galaxy Tab E 8.0 can be damaged if the camera is struck by a hard object. This guide shows how to replace the tablet's front camera which is attached to the motherboard.

TOOLS:

- [Tweezers](#) (1)
 - [iFixit Opening Tools](#) (1)
-

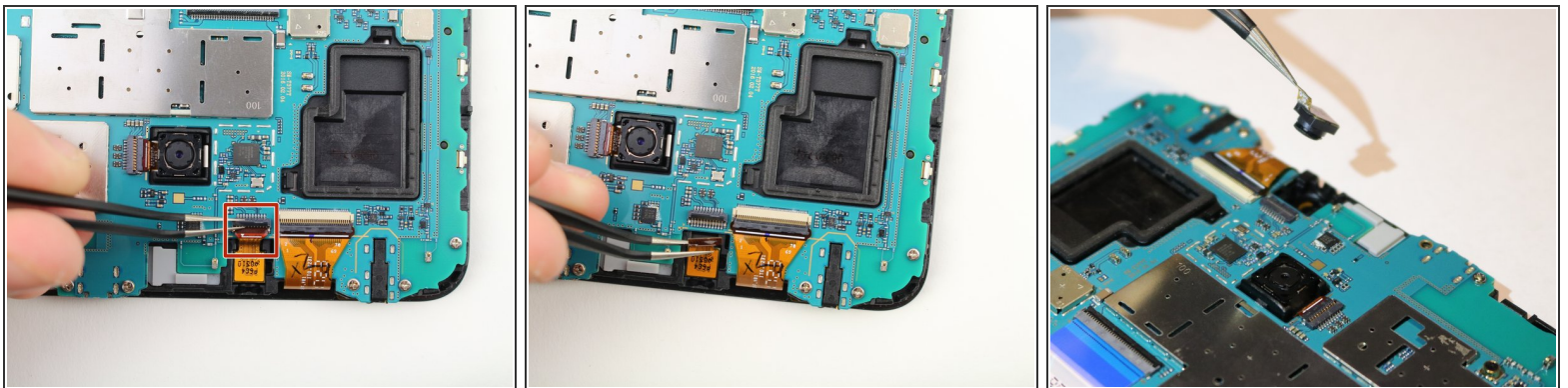
Step 1 — Back Panel



- Use the iFixit Opening Tool to pry off the back case, moving the tool around the screen.

⚠ Make sure the device is off and the SD card is removed before taking off the back casing.

Step 2 — Front Camera



- Use the tweezers to lift the switch connecting the front camera to the motherboard.
- Remove the front camera from the motherboard by lifting with the tweezers.

To reassemble your device, follow these instructions in reverse order.

This document was last generated on 2018-12-11 10:13:44 PM.