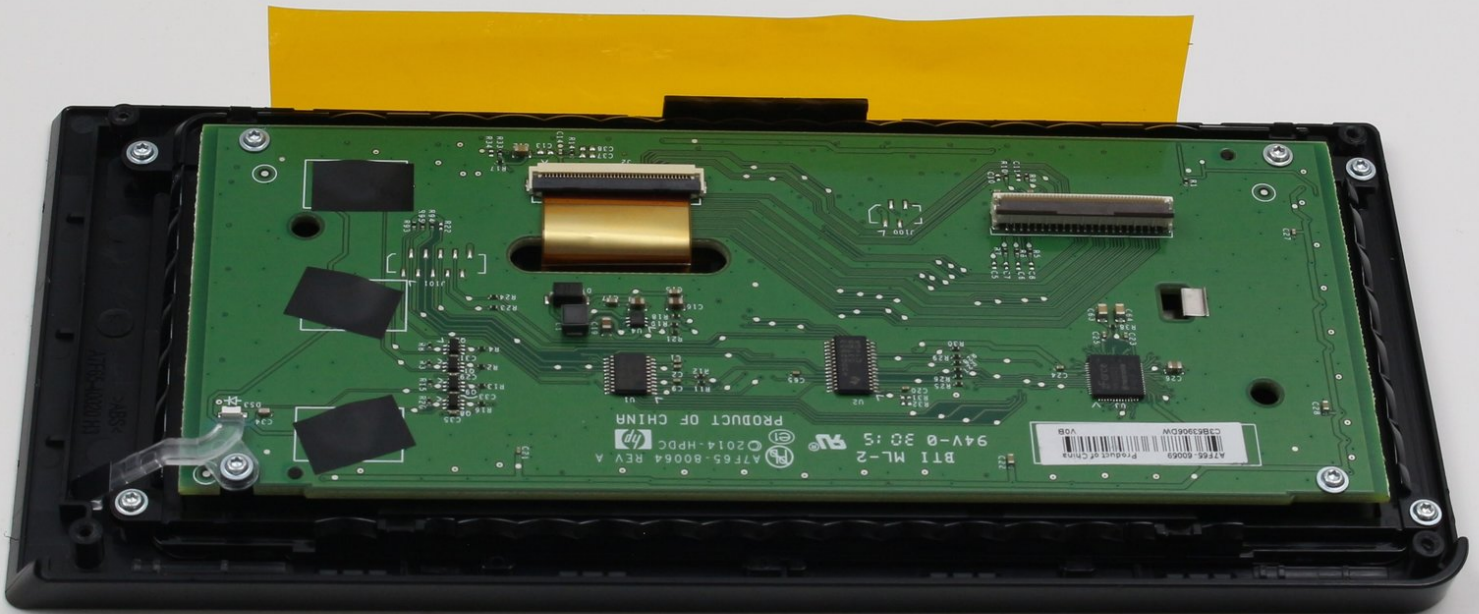




HP Officejet Pro 8625 Display Motherboard Replacement

If your HP Officejet Pro 8625 display shows a blank screen or nothing at all, replace the motherboard using this guide.

Written By: Daniel



INTRODUCTION

If your HP Officejet Pro 8625 display is blank or not turning on, you can replace the display motherboard using this guide. You will need a T9 Torx screwdriver and a T6 Torx screwdriver for the screws in this guide.

TOOLS:

- [T9 Torx Screwdriver](#) (1)
 - [T6 Torx Screwdriver](#) (1)
-

Step 1 — Display Motherboard



- Disconnect the display by holding it in place while pulling down on the plastic hinge.
- ⓘ Slowly apply more and more force as it does take a lot to separate, do not worry about the hinge or display breaking.

Step 2



- Lift the display as high as it will allow to expose the back of the display.
- Pinch the sides of the cover and pull away from the printer to reveal the connector.
- Remove the connector by pulling both away from the display and towards the printer.

Step 3



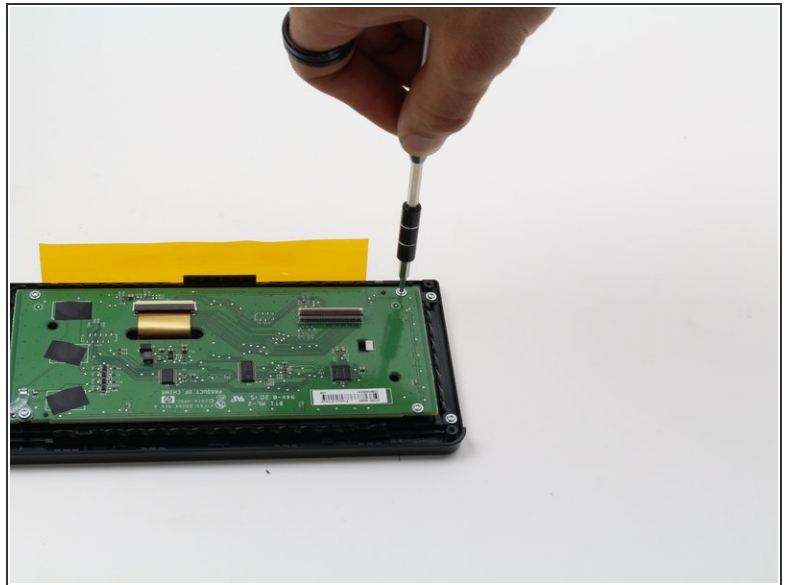
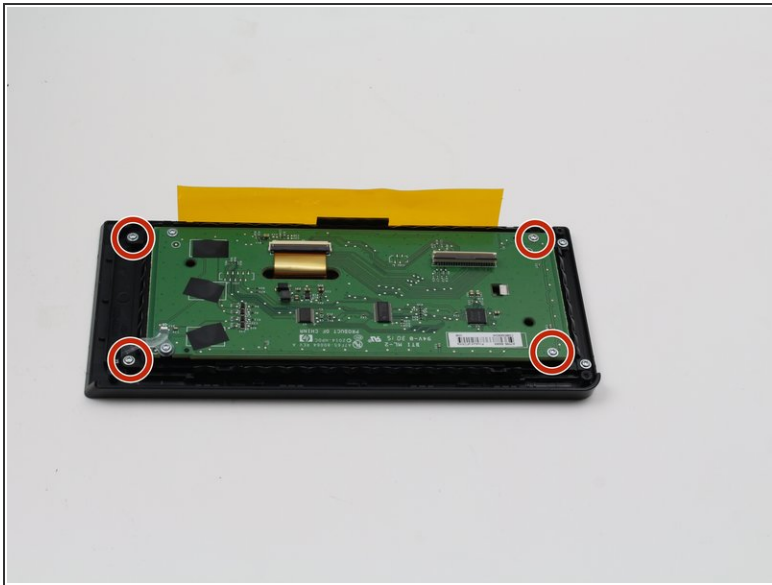
- Remove the four 6.2 mm T9 screws from the back of the display.
- Pull the display assembly up and away from the printer.

Step 4



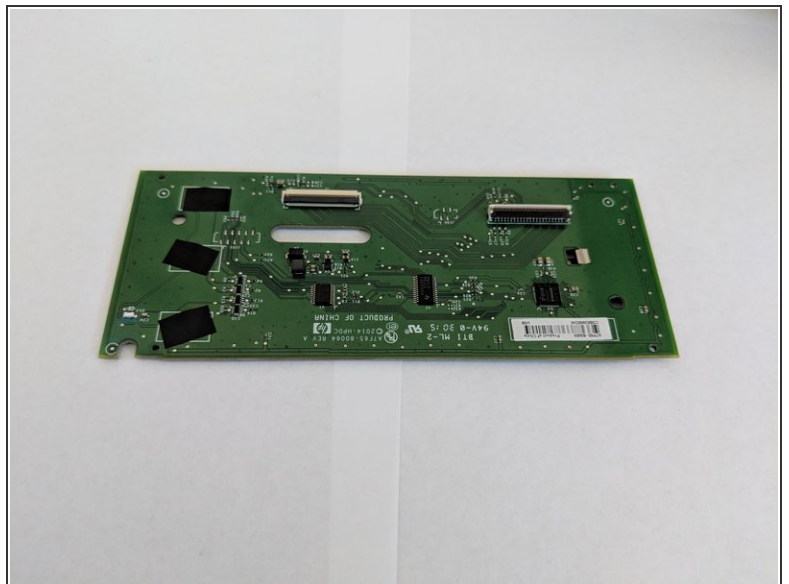
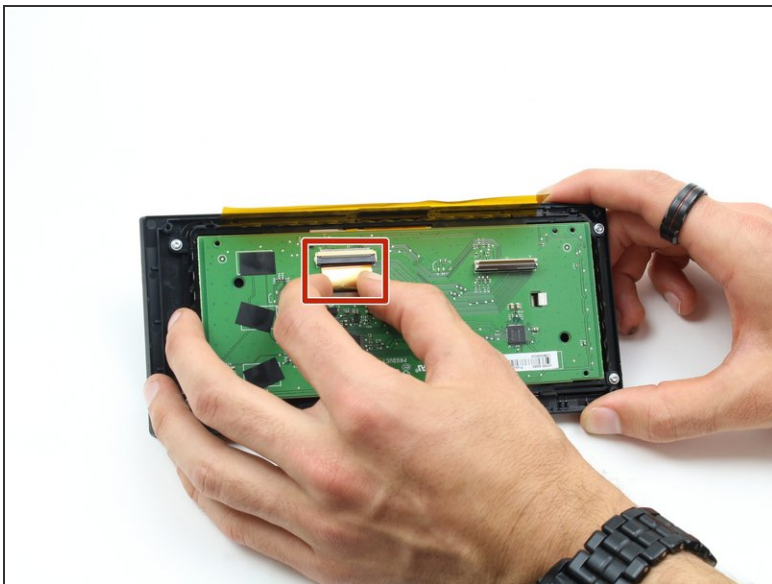
- Remove the back cover from the display assembly by pressing down on the point of connection.
- ⚠ If you use a plastic spudger for this step, be careful not to brake the plastic as you do not need to use much force to remove the back cover.

Step 5



- Remove the four 4.8 mm T6 screws from the back of the display motherboard.

Step 6



- Remove the connection on the front of the display motherboard.
- Remove the display motherboard.

To reassemble your device, follow these instructions in reverse order.

