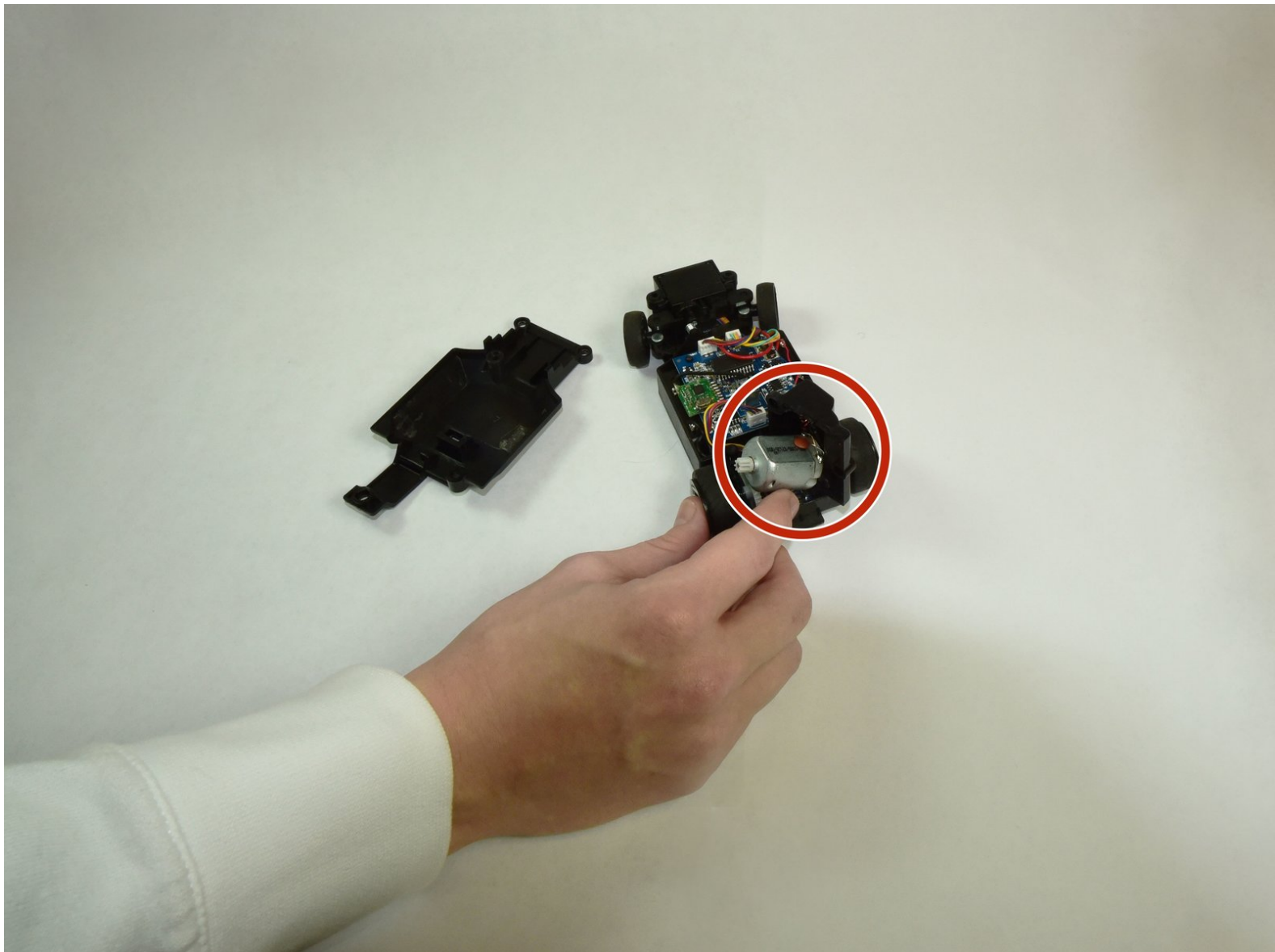




Hot Wheels AI Intelligent Race System Car Motor Replacement

This is a step by step replacement guide on how to replace the car motor.

Written By: Peter Nguyen



 **TOOLS:**

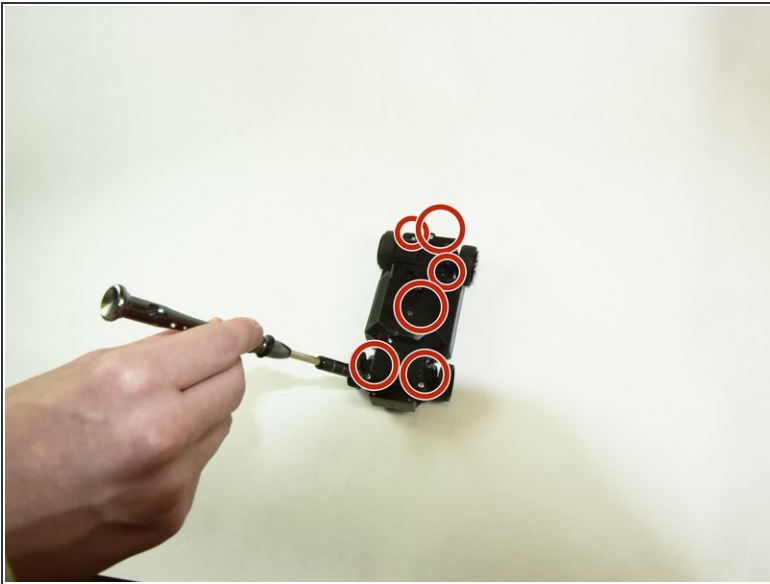
- JIS #0 Screwdriver (1)
 - JIS #1 (1)
-

Step 1 — Car Motor



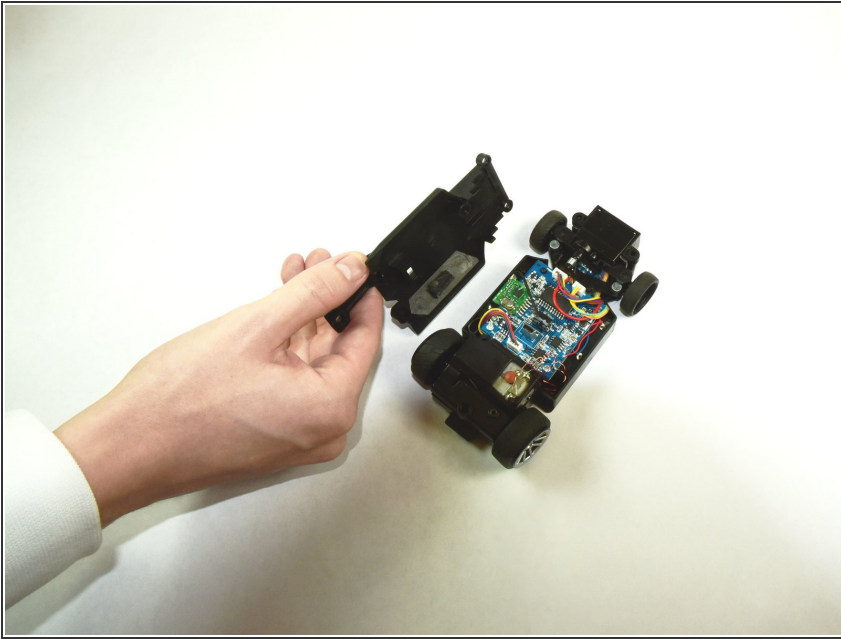
- Locate the two screws on the back of the car towards the front. Use a #J0 JIS screw to loosen the screws.

Step 2



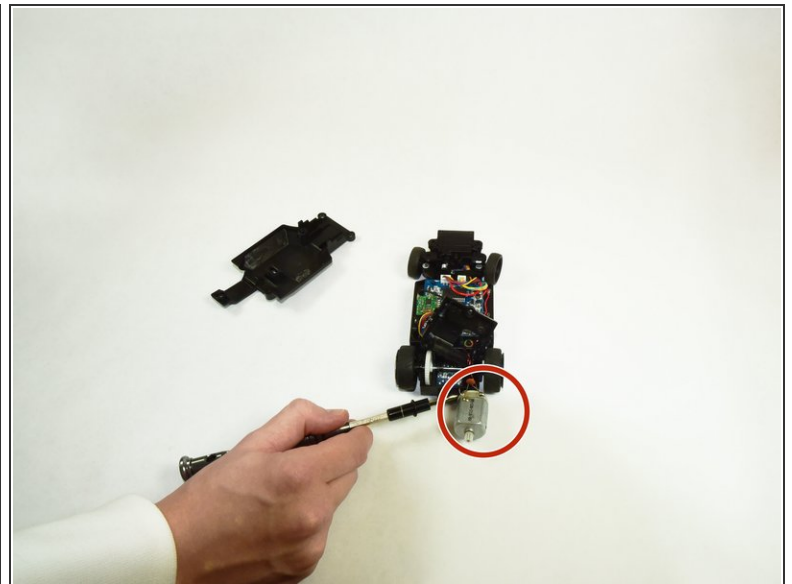
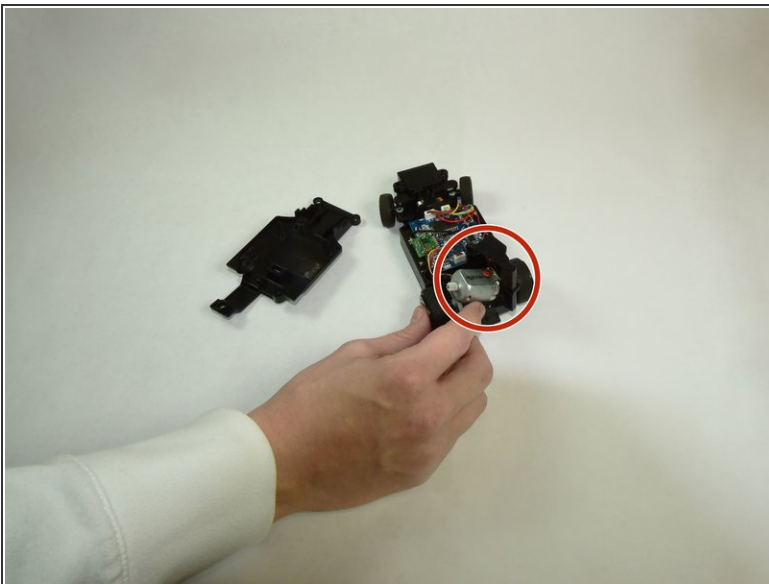
- Locate the next six screws and use a #J0 JIS Screw to take them off.

Step 3



- Remove the back-cover off and make sure there are no rust or disconnected wires.

Step 4



- Locate the receiver which is towards the back end of the car.
- Replace the receiver by disconnecting the wires.

To reassemble your device, follow these instructions in reverse order.