



Novatel MiFi 2 4G LTE Hotspot SIM Card Replacement

Replace a dead SIM Card in your Novatel Hotspot device.

Written By: GerardFoley



INTRODUCTION

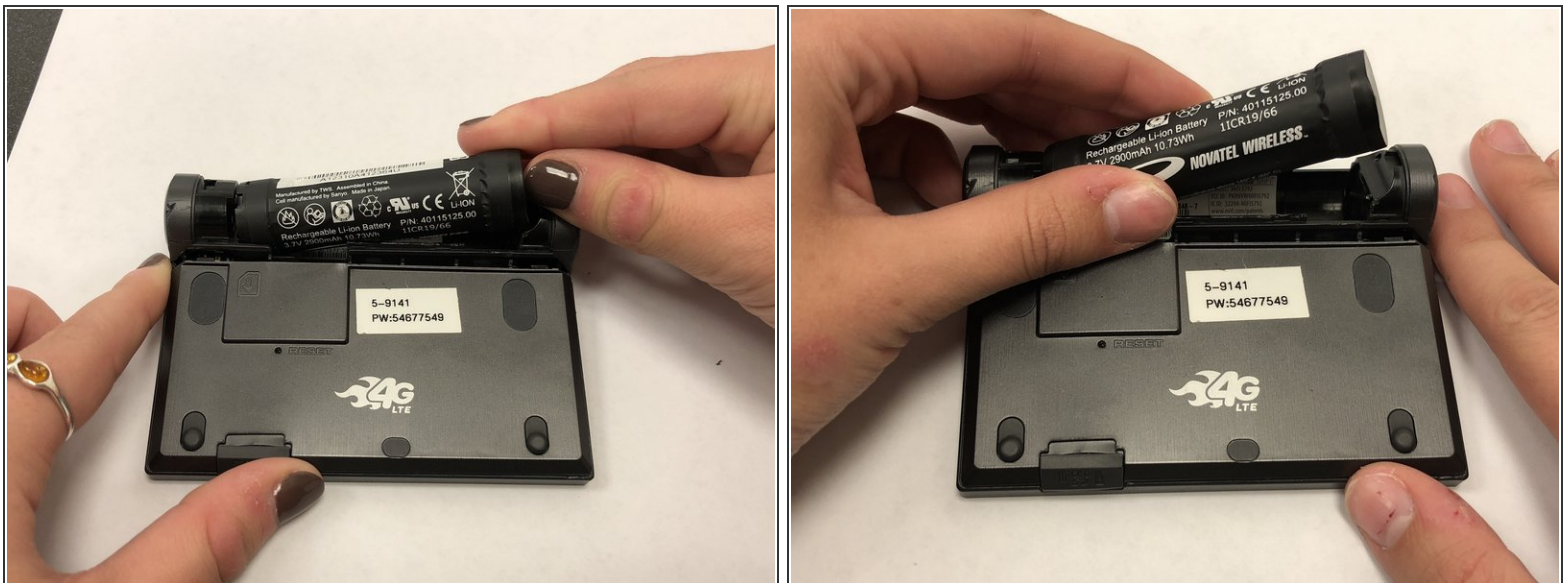
This guide will show you step by step how to remove a dead SIM Card from your Novatel Hotspot device. This requires the removal of the black plastic battery cover and the battery.

Step 1 — Battery Cover



- Unplug the charger from your Novatel Hotspot device.
- Place the Novatel Hotspot device face down on a flat, clean surface.
- Place your thumb under the latch of the black plastic battery cover as shown.
- ⓘ Remove the battery cover. This will require some force.

Step 2 — Battery



- Gently place your thumb on the right side of the battery as shown.
- Remove the battery from its socket by lifting it up and out.

Step 3 — SIM Card



- Once the battery has been removed, the SIM Card slot can be accessed.
- Carefully take out the dead SIM Card by lifting it from its position with your fingers.

To reassemble your device, follow these instructions in reverse order.

This document was last generated on 2019-01-14 03:16:51 PM.