



Novatel MiFi 2 4G LTE Hotspot SD Card Replacement

Replace a faulty SD Card in your Novatel Hotspot device.

Written By: GerardFoley

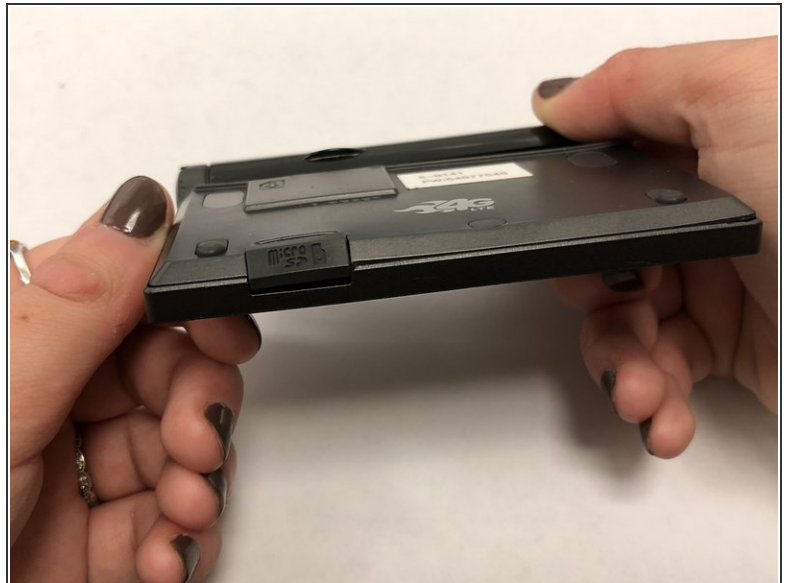


INTRODUCTION

This guide will show you how to replace a faulty SD Card in your Novatel Hotspot device. This requires opening the rubber flap and removing the old SD Card.

Note: This guide does not feature an actual SD Card.

Step 1 — SD Card



- Unplug the charger from your Novatel Hotspot device.
- Place the Novatel Hotspot device face down on a flat, clean surface.
- Locate the rubber SD Card cover on the bottom left hand side of the device. The cover is labeled "Micro SD."

Step 2



- Open the SD Card cover by placing your finger on the top of the rubber cover and pulling it down.
 - Remove the faulty SD card from its slot by sliding it out with your finger.
- i** This guide does not feature an actual SD Card.

To reassemble your device, follow these instructions in reverse order.

This document was last generated on 2019-07-22 06:40:18 PM.