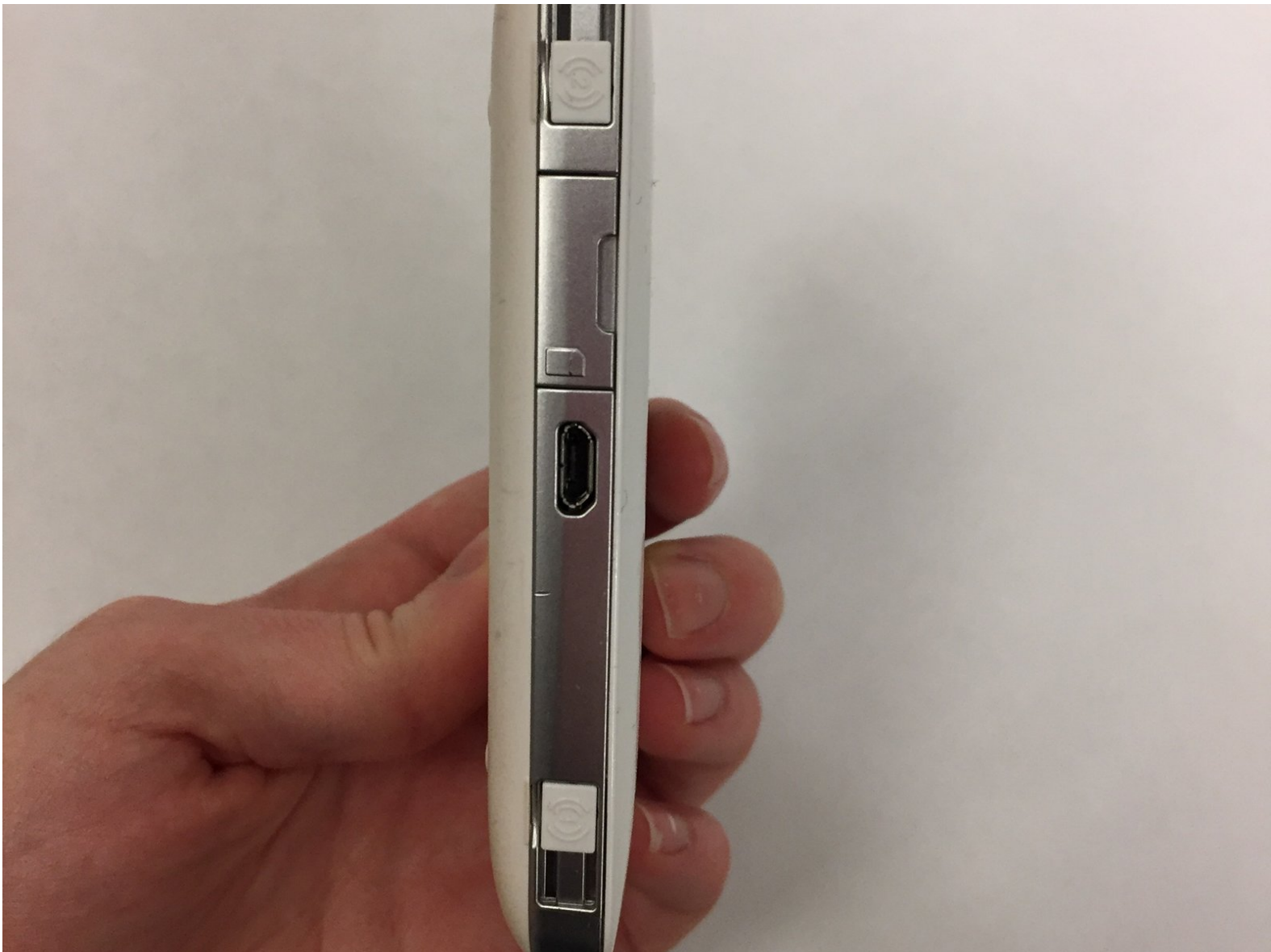




AirCard 770S SIM Card Replacement

This guide is to learn how to replace your SIM Card in your AirCard 770S.

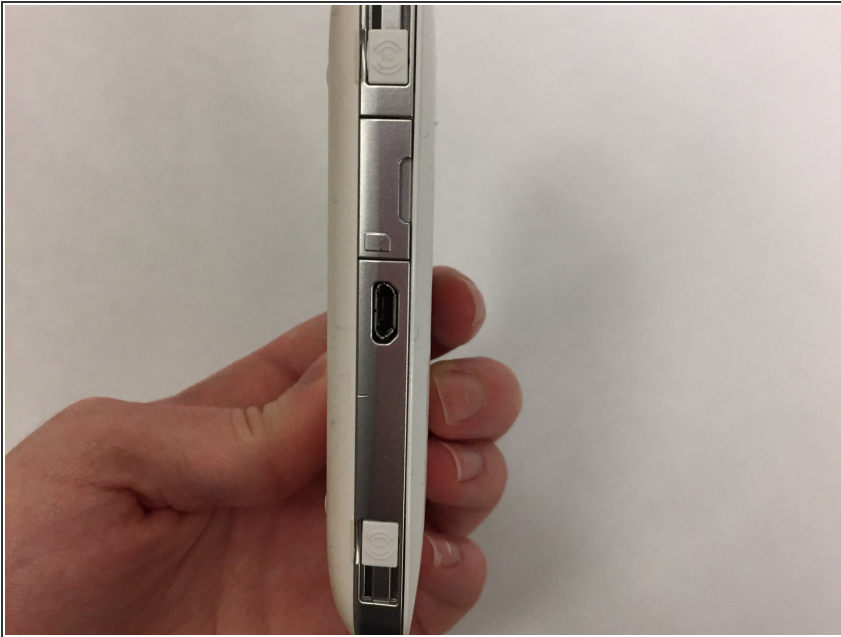
Written By: Caitlin Little



INTRODUCTION

This guide is designed to help you replace your SIM Card in the device. In order to replace your SIM Card you must have a new SIM Card or are simply learning how to properly insert a SIM Card. Make sure your SIM Card is the correct size to fit into the area in your device.

Step 1 — SIM Card



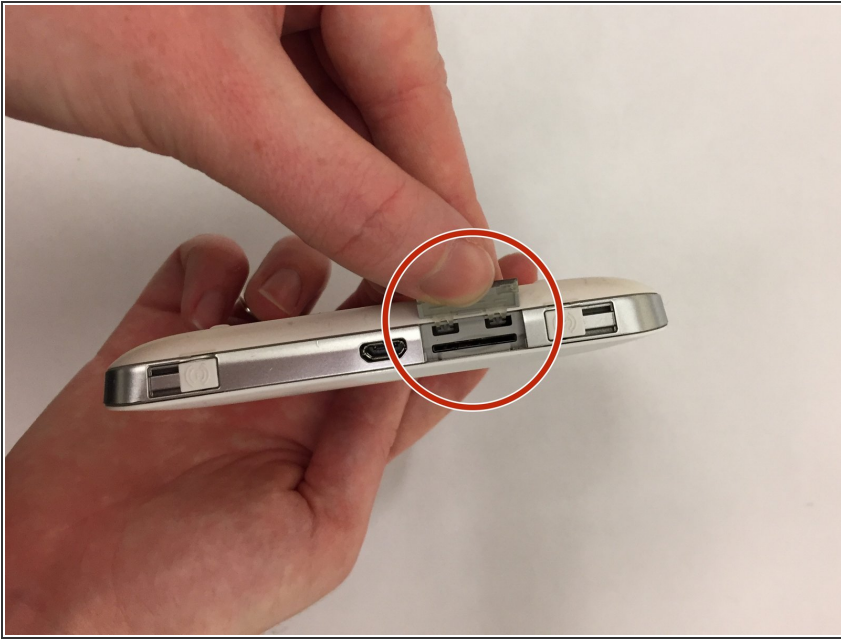
- Hold the device with the charging port side facing up.

Step 2



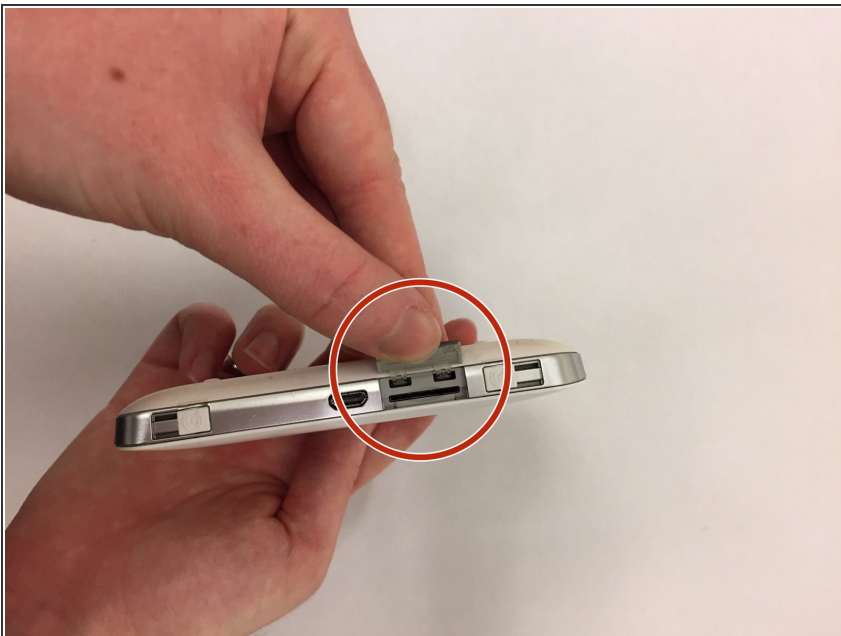
- Look to the left of the charging port and peel back the SIM Card slot in order to open it.

Step 3



- If there is already a SIM Card in the slot, use your finger to press in the SIM Card so that it will pop out slightly. If it does not pop out the first time, press it in again.
- ⓘ The SIM Card is not shown in picture. The red circle is where the SIM Card would be located.

Step 4



- Use your fingers and carefully pull out the old SIM Card.
- ⓘ The SIM Card is not included in picture. The orange circle is where SIM Card would be located on the device.
- ★ When reassembling the device, make sure to press in the new SIM Card all the way so that the port can be closed and you can then power on the device.

To reassemble your device, follow these instructions in reverse order.