



Samsung Galaxy Tab E 8.0 Back Panel Replacement

Replacing the back panel of the Samsung Galaxy Tab E 8.0. Model of device is SM-T377V.

Written By: Scott Kampfen



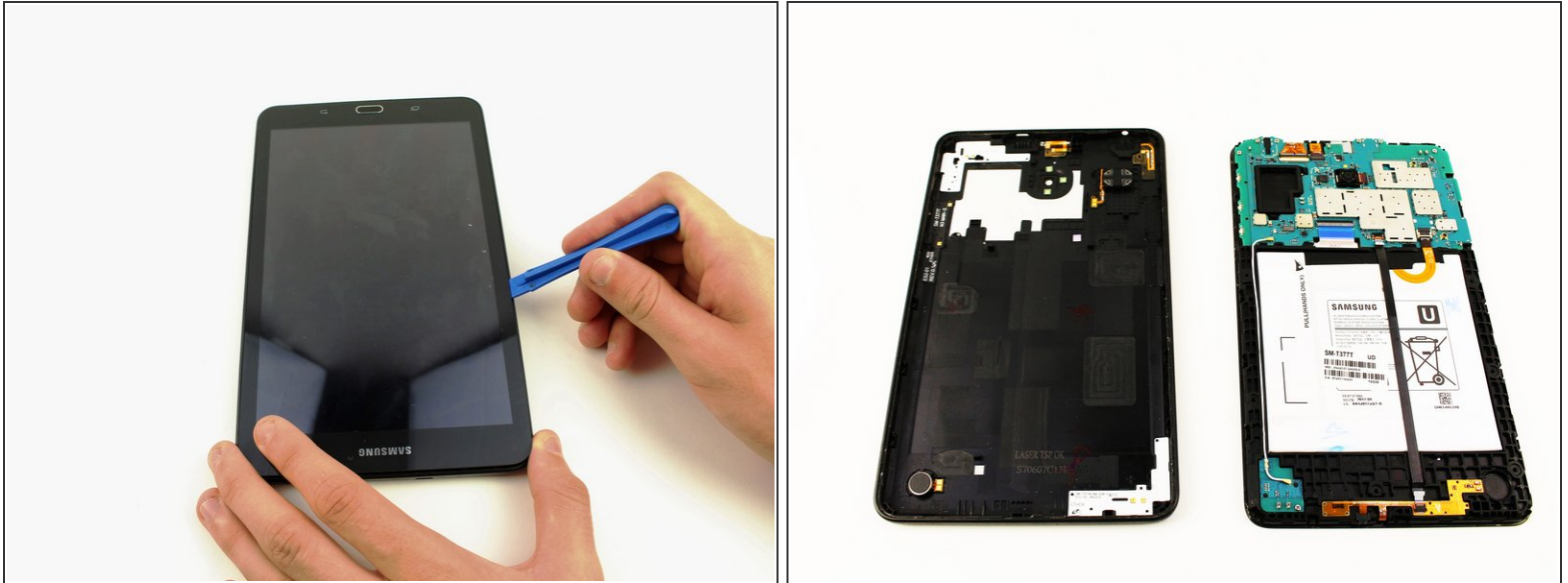
INTRODUCTION

The back panel of the Samsung Galaxy Tab E 8.0 can be damaged if the back panel is struck by a hard object. This guide shows how to replace the back panel of the tablet by separating it from the screen.


TOOLS:

- [iFixit Opening Tools](#) (1)
-

Step 1 — Back Panel



- Use the iFixit Opening Tool to pry off the back case, moving the tool around the screen.

 Make sure the device is off and the SD card is removed before taking off the back casing.

To reassemble your device, follow these instructions in reverse order.