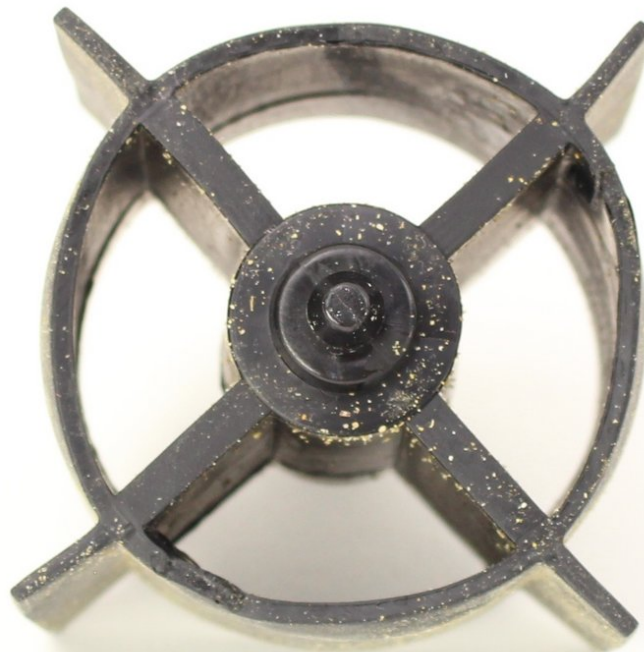




# Petnet SmartFeeder SF10E Food Dispensing Wheel Replacement

Replace the food dispensing wheel if your Petnet SmartFeeder SF10E isn't dispensing food.

Written By: Louis Squitieri



## INTRODUCTION

The SmartFeeder has a rubber wheel between the top food basin and the lower metal tray. This wheel may become stuck or damaged during operation. Get a friend to help you hold the wheel housing open while you remove the wheel in Step 4.

---

### TOOLS:

- [iFixit Opening Tools](#) (1)
  - [Phillips #1 Screwdriver](#) (1)
-

## Step 1 — Food Dispensing Wheel



- Eject the SmartBowl by pressing the button located at the front of the SmartFeeder base.

## Step 2



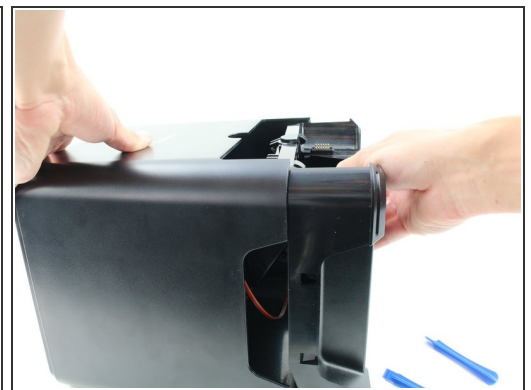
- Remove the food tub by twisting it counter-clockwise with both hands and lifting it up.

### Step 3



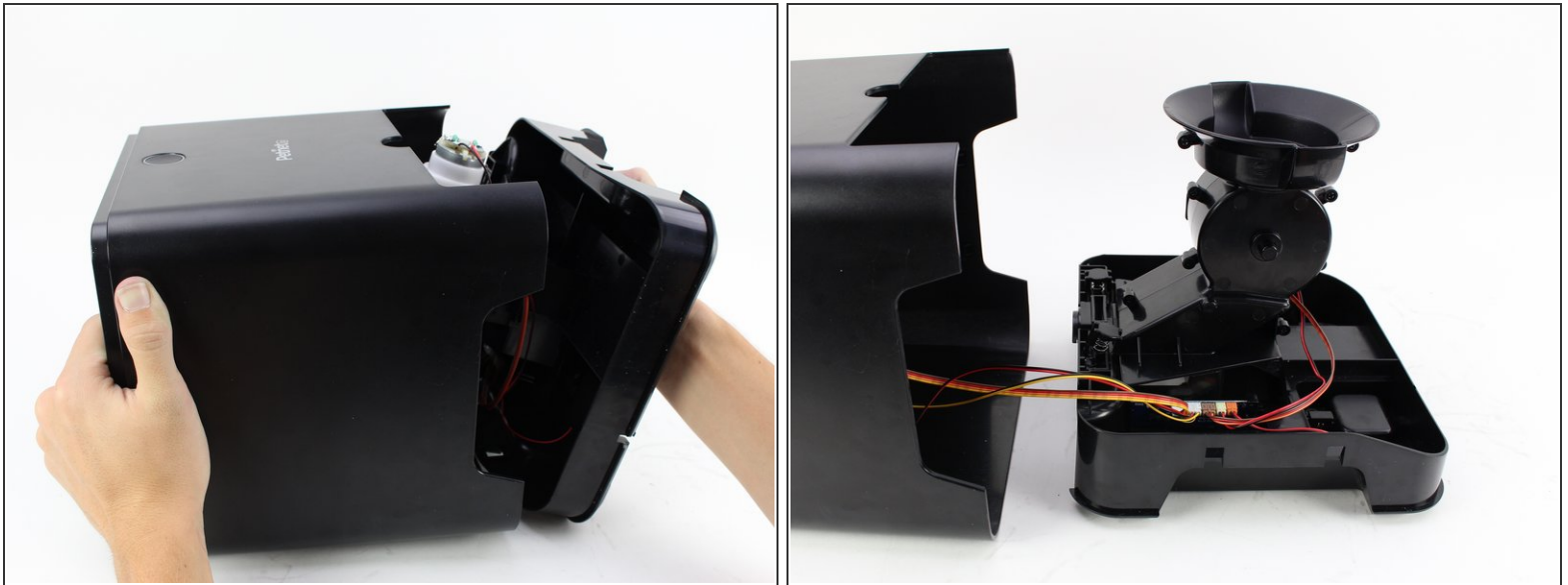
- Remove the black plastic gasket from the top of the SmartFeeder by placing your fingers on the side of it and lifting up.
- ⓘ It should come off very easily.

### Step 4



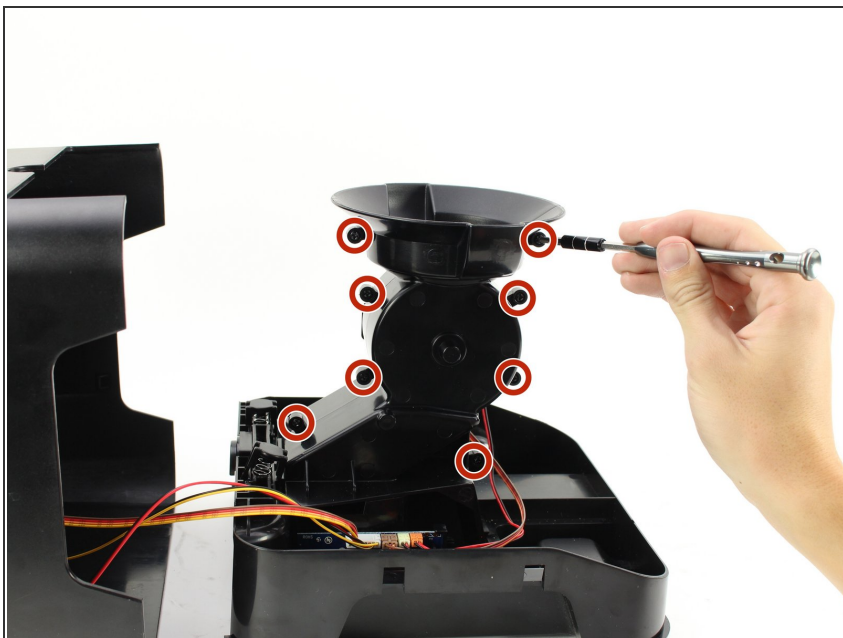
- Flip over the SmartFeeder by using both hands.
- Partially open the outer case of the SmartFeeder by wedging an iFixit Opening Tool on each side.

## Step 5



- Turn the SmartFeeder on its side and with one hand on the base, carefully pull out the central section.
- Place the bottom piece of the device right-side up.

## Step 6



- Remove the eight 11mm screws from the central pillar using a Phillips #1 screwdriver.

## Step 7



- Pull apart the two sides of the central pillar at the top by using both hands.
- ⓘ The two sides will not completely separate at the base.
- With the two halves partially separated, pull out the rubber wheel with your hand.
- ⚠ A small black rectangular piece may fall out of the chute when the halves are partially separated. Reattach this by reaching into the chute and putting the pins from the piece into the holes on the side of the chute.

To reassemble your device, follow these instructions in reverse order.

This document was last generated on 2019-01-14 09:52:50 PM.