



# Lenovo ThinkPad Edge E420s Hard Drive Replacement

Replace your hard drive in order to restore functionality to your Lenovo ThinkPad Edge E420s.

Written By: Keyadri Summerlin



## INTRODUCTION

Use this guide to replace a full or faulty hard drive in your Lenovo ThinkPad Edge E420s laptop.

The hard drive is a piece of hardware that stores and retrieves data in your computer. A failing hard drive can cause your laptop to produce irregular noises and/or continuous crashes and error messages like “file not found” or “Windows detected a hard disk problem.” In some cases, your computer may not boot at all if it experiences hard drive failure.

Before using this guide, make sure to review the [troubleshooting page](#)—oftentimes, malware or corrupted files can be fixed without replacing the hard drive.

If you're running low on storage, you may want to consider upgrading your hard drive. Follow instructions [here](#) to see how much storage space you have left. This device supports HDDs in capacities of 250GB and 320GB (hard drive specs are: SATA 3.0Gb/s, 2.5" wide, 7mm high). It can also support SSDs with the following specs: SATA 3.0Gb/s 128GB SSD, 2.5" wide, 7mm high.

Be sure to [back up](#) your hard drive before replacing it so you don't lose any data while you're doing the replacement. Make sure to power off your laptop completely and disconnect from any external power source prior to beginning the process.



### TOOLS:

- [Phillips #00 Screwdriver](#) (1)



### PARTS:

- [1 TB SSD / Upgrade Bundle](#) (1)
- [250 GB SSD / Upgrade Bundle](#) (1)
- [500 GB SSD / Upgrade Bundle](#) (1)
- [2 TB SSD / Upgrade Bundle](#) (1)

## Step 1 — Hard Drive



**⚠** There is no external access to the battery. Please make sure the at the battery has been drained or disabled through BIOS before beginning.

- Flip the device over.

## Step 2



- Use a Phillips #00 screwdriver to remove one M2 x 3mm screw from the side of the device.

### Step 3



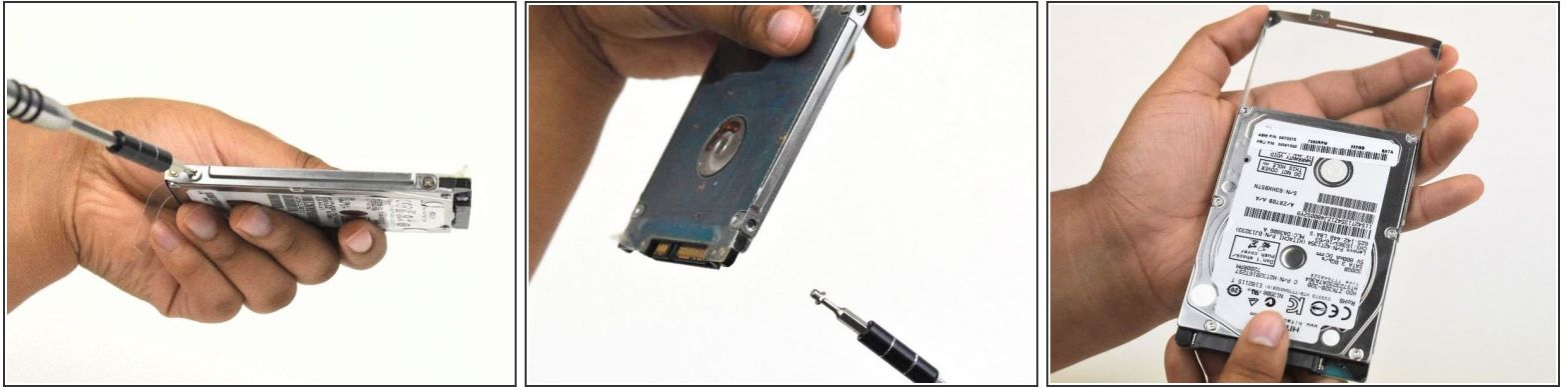
- Swing the cover out slightly like a hinge.
  - Pull the cover directly away from the case towards the base of the laptop.
  - Lift the cover up and away from the device to remove it.
- i** You may hear a slight pop when you pull the cover off.

### Step 4



- Use the clear tab to slide the hard drive out of the device.

## Step 5



- To replace the hard drive, remove the four M2 × 4mm wafer-headed screws on the sides of the hard drive case using a Phillips #00 screwdriver.
- Slide the old hard drive directly out.
- ⓘ When reassembling, make sure the hard drive is securely in the case before beginning.

To reassemble your device, follow these instructions in reverse order.