



HP Officejet Pro 8625 Display Replacement

Replace the HP Officejet Pro 8625 screen display on your printer if it is black or broken.

Written By: Cole Andrews



INTRODUCTION

If the display on your printer is no longer working, you may need to replace it. This guide will show you how. You will need a T9 Torx screwdriver and a T6 Torx screwdriver to remove the screws in this guide.

TOOLS:

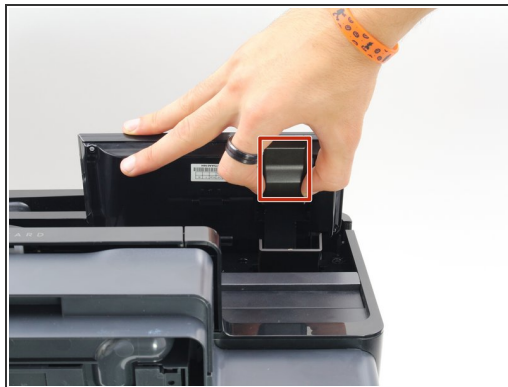
- [T6 Torx Screwdriver](#) (1)
 - [T9 Torx Screwdriver](#) (1)
-

Step 1 — Display Motherboard



- Disconnect the display by holding it in place while pulling down on the plastic hinge.
- ⓘ Slowly apply more and more force as it does take a lot to separate, do not worry about the hinge or display breaking.

Step 2



- Lift the display as high as it will allow to expose the back of the display.
- Pinch the sides of the cover and pull away from the printer to reveal the connector.
- Remove the connector by pulling both away from the display and towards the printer.

Step 3



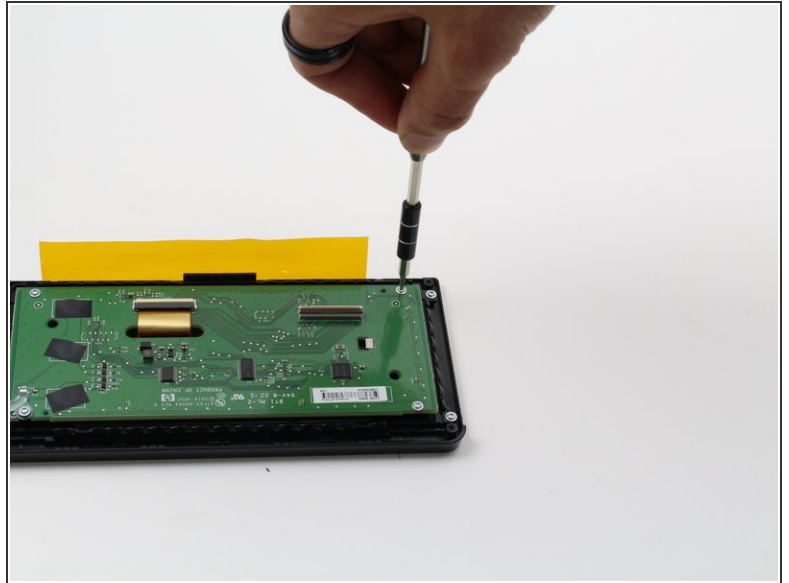
- Remove the four 6.2 mm T9 screws from the back of the display.
- Pull the display assembly up and away from the printer.

Step 4



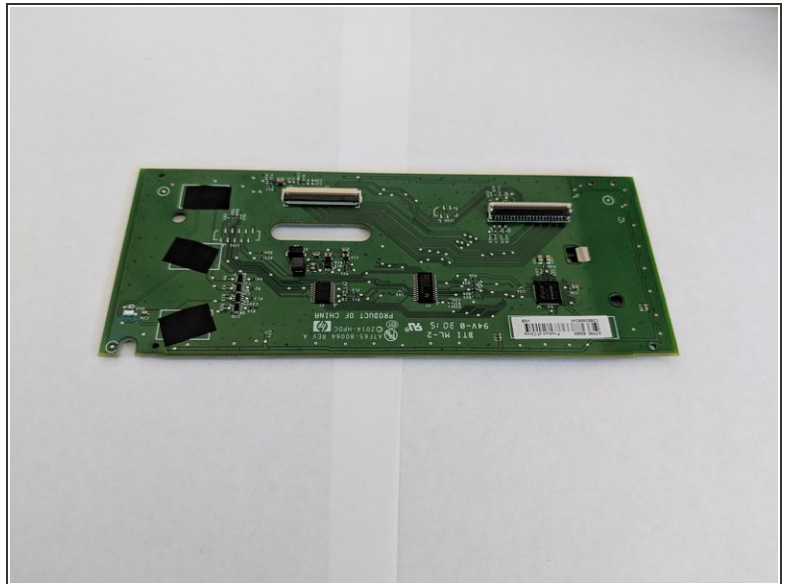
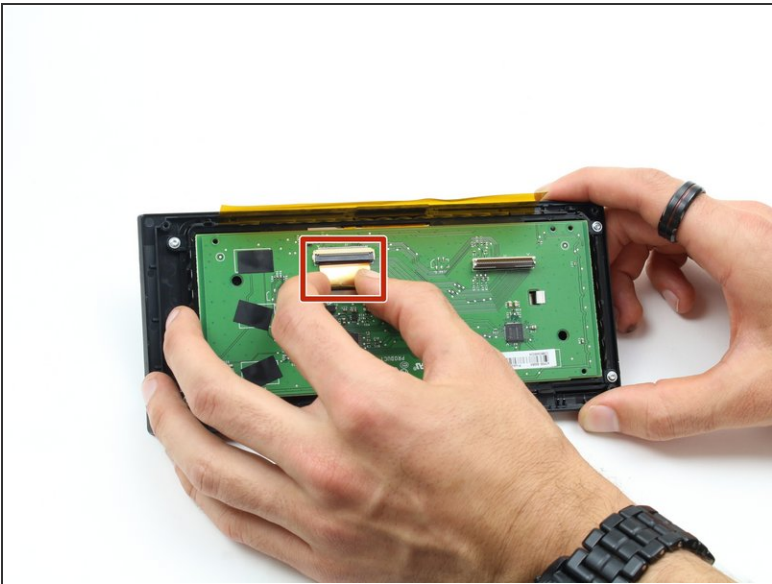
- Remove the back cover from the display assembly by pressing down on the point of connection.
- ⚠ If you use a plastic spudger for this step, be careful not to brake the plastic as you do not need to use much force to remove the back cover.

Step 5



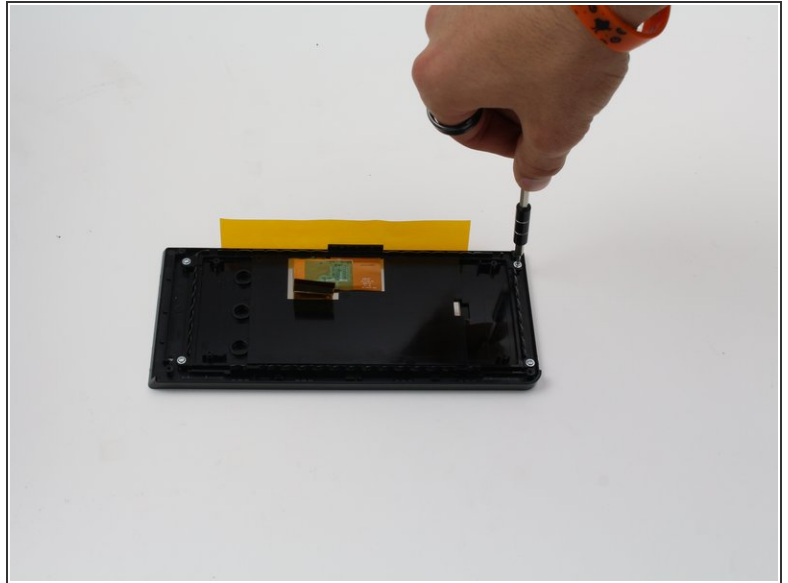
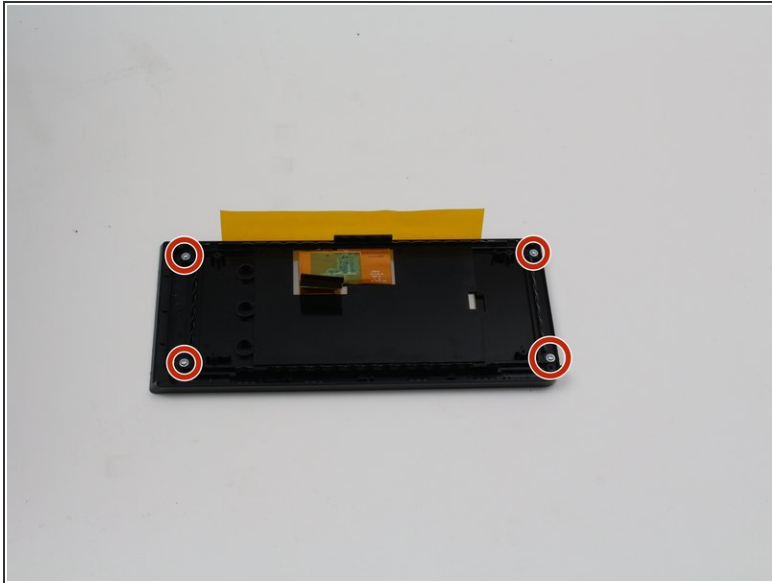
- Remove the four 4.8 mm T6 screws from the back of the display motherboard.

Step 6



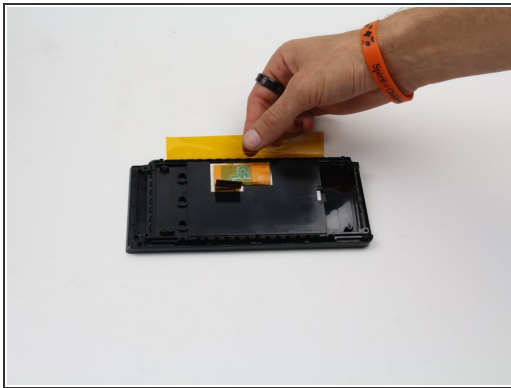
- Remove the connection on the front of the display motherboard.
- Remove the display motherboard.

Step 7 — Display



- Remove the four 4.8 mm screws from the back of the display using a T6 screwdriver.

Step 8



- Lift the display out of the case.

To reassemble your device, follow these instructions in reverse order.

This document was last generated on 2018-12-11 10:29:05 PM.