



Kenmore 78423 Dust filter Replacement

This guide will show you how to remove and clean/replace the rear dust filter.

Written By: Christopher Bradley



INTRODUCTION

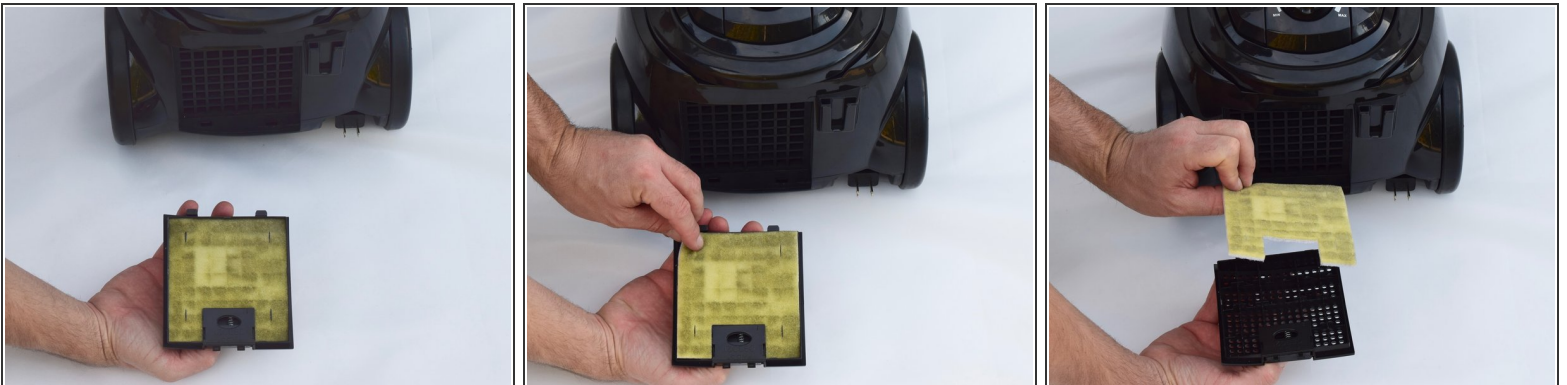
Learn how to remove and clean/replace the rear dust filter on your Kenmore 78423.

Step 1 — Rear Dust filter



- Grab the filter cover at the rear of the machine, near the wheels
- Press and hold the button at the top of the filter cover
- Pull the filter cover away from the main body

Step 2



- Pinch and separate the used sponge filter from the plastic filter cover

To reassemble your device, follow these instructions in reverse order.