



Nokia 8390 SIM Card Replacement

This guide shows users how to install the SIM Card into their phone.

Written By: Clinton



INTRODUCTION

This guide shows you how to remove or install the SIM card in case of needed replacement.

TOOLS:

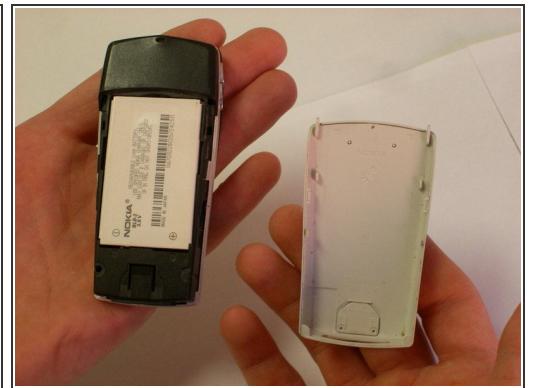
- [Spudger](#) (1)
-

Step 1 — Back Cover



- Locate the button on the bottom of the back cover.

Step 2



- Depress the button with your finger.
- While the button is depressed, slide the back cover off of the phone.

Step 3 — Battery



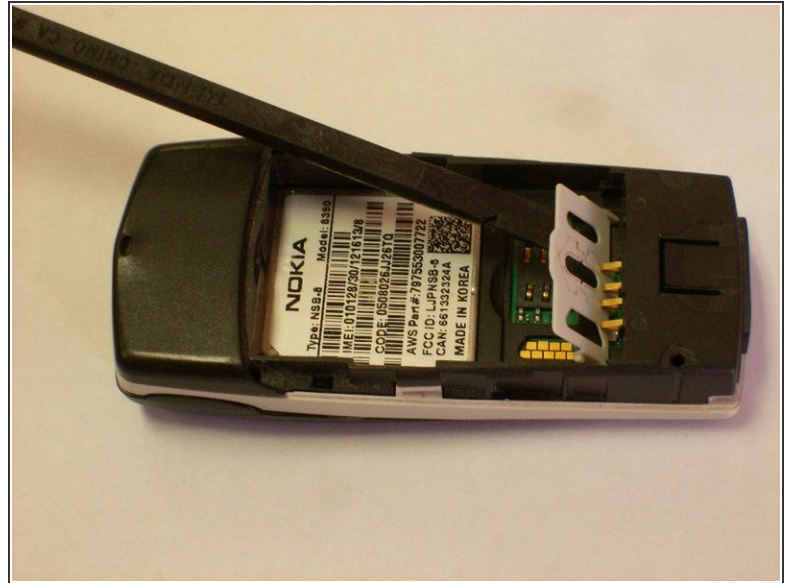
- Place the phone so that the battery is face up.
- Insert a screwdriver or spudger into the crevice above the battery.

Step 4



- Use a screwdriver or spudger to lift the battery out of the casing.

Step 5 — SIM Card



- Place the spudger under the plastic cover and lightly lift.
- Insert the SIM Card under the plastic cover and close.

To reassemble your device, follow these instructions in reverse order.