



# Alpine MRV-M500 Fuse Replacement

Replace blown fuses on an Alpine MRV-M500.

Written By: Eric Gaulke



## INTRODUCTION

Fuses are a common component in many electronic devices. They limit the current flowing to the device. If too much current is passed through them, they can become damaged or blown. To replace a fuse in the Alpine MRV-M500 you will need a pair of needle-nosed pliers and new 30A fuses.



### TOOLS:

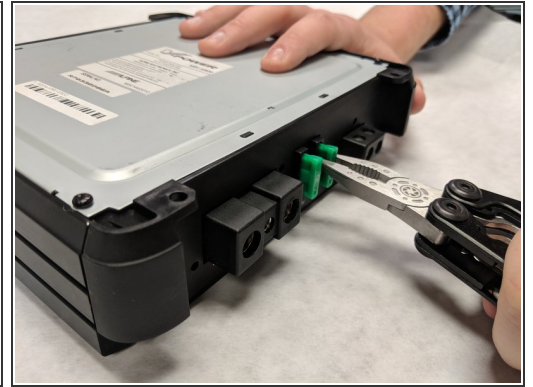
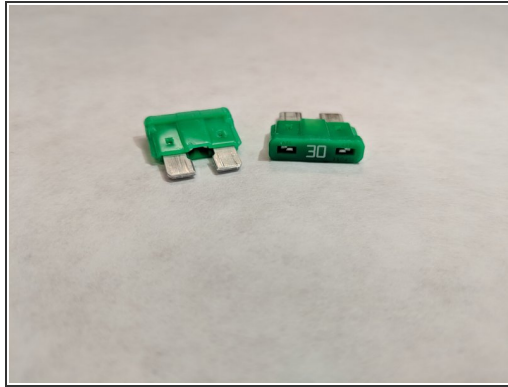
- [Large Needle Nose Pliers](#) (1)



### PARTS:

- [30A Fuse](#) (1)

## Step 1 — Fuse



- Fuses are on the front panel.
- Use needle nosed pliers to remove fuse.
- ☑ To install the new fuse, simply insert it in the same orientation as the original.
- ⓘ This may require some force.

This document was last generated on 2018-12-11 10:33:20 PM.