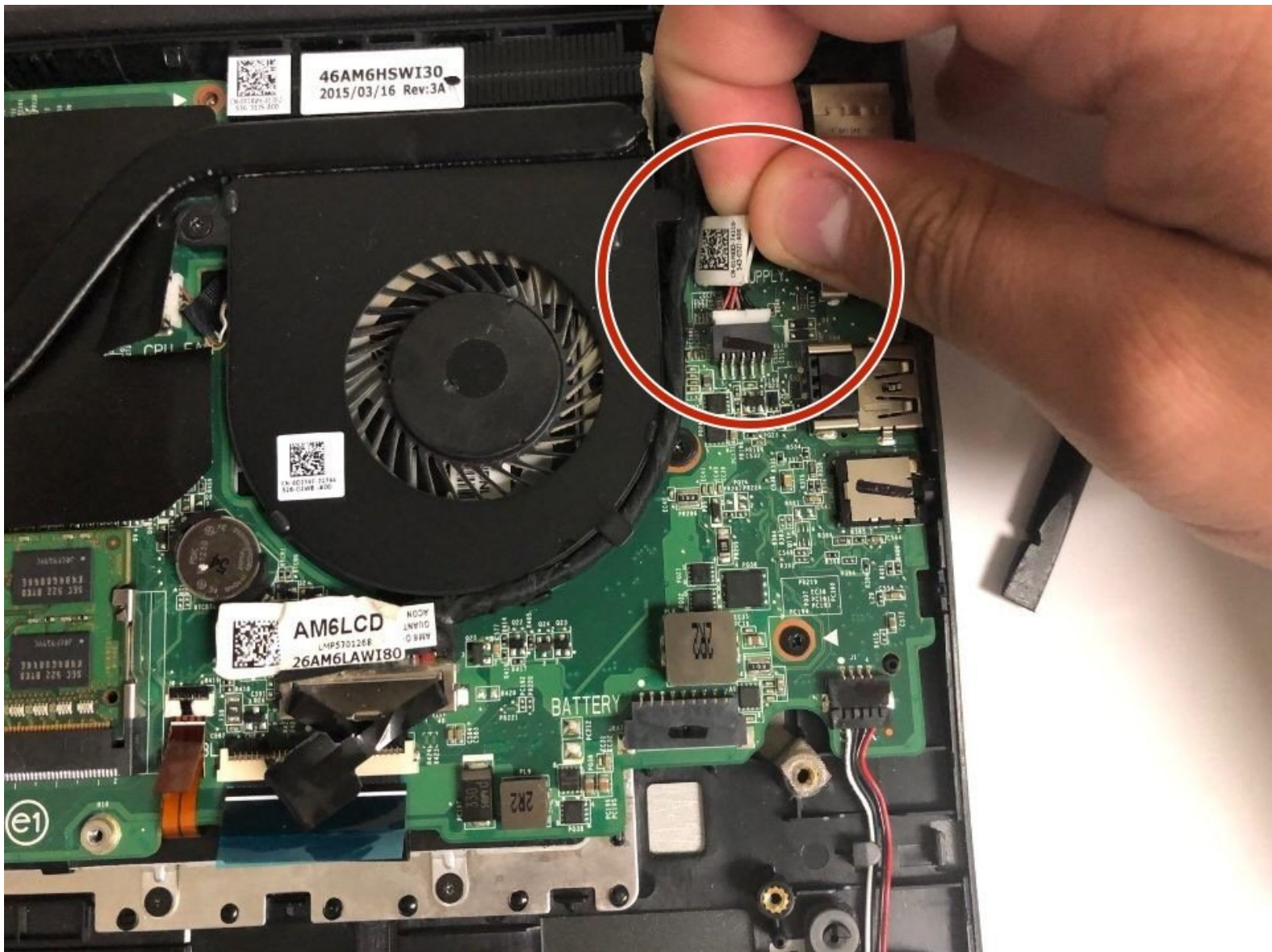




Dell Inspiron 15-7548 Power Port Replacement

Use this guide in replacing the power port in your Dell Inspiron 15-7548.

Written By: Christopher Fisher



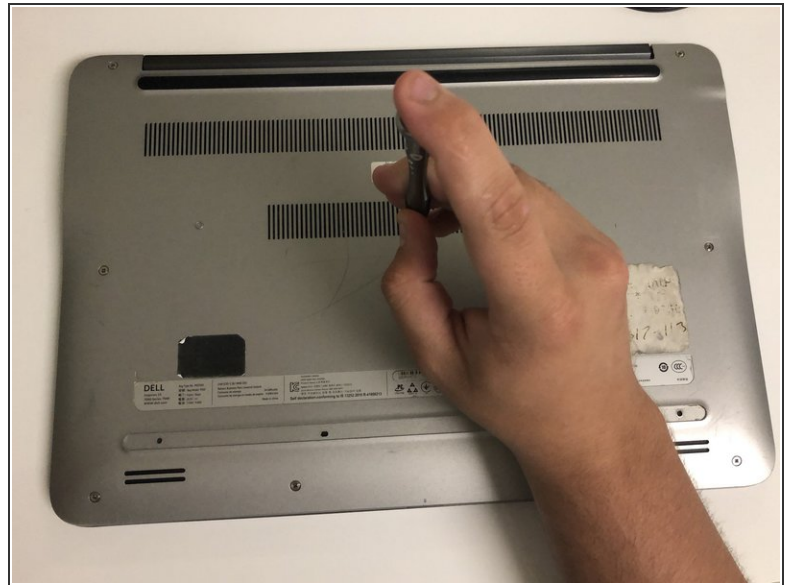
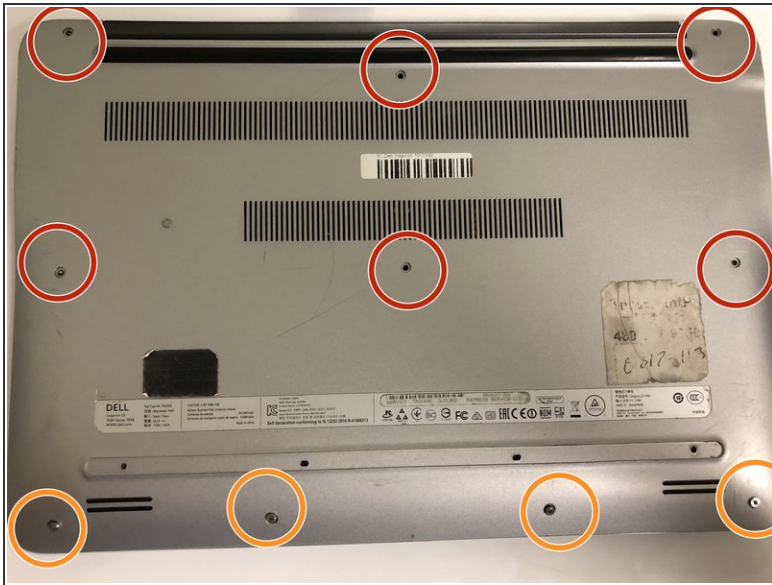
INTRODUCTION

This guide will walk you through how to remove the power port in your Dell Inspiron 15-7548.

TOOLS:

- [Phillips #1 Screwdriver](#) (1)
 - [Spudger](#) (1)
-

Step 1 — Back Panel



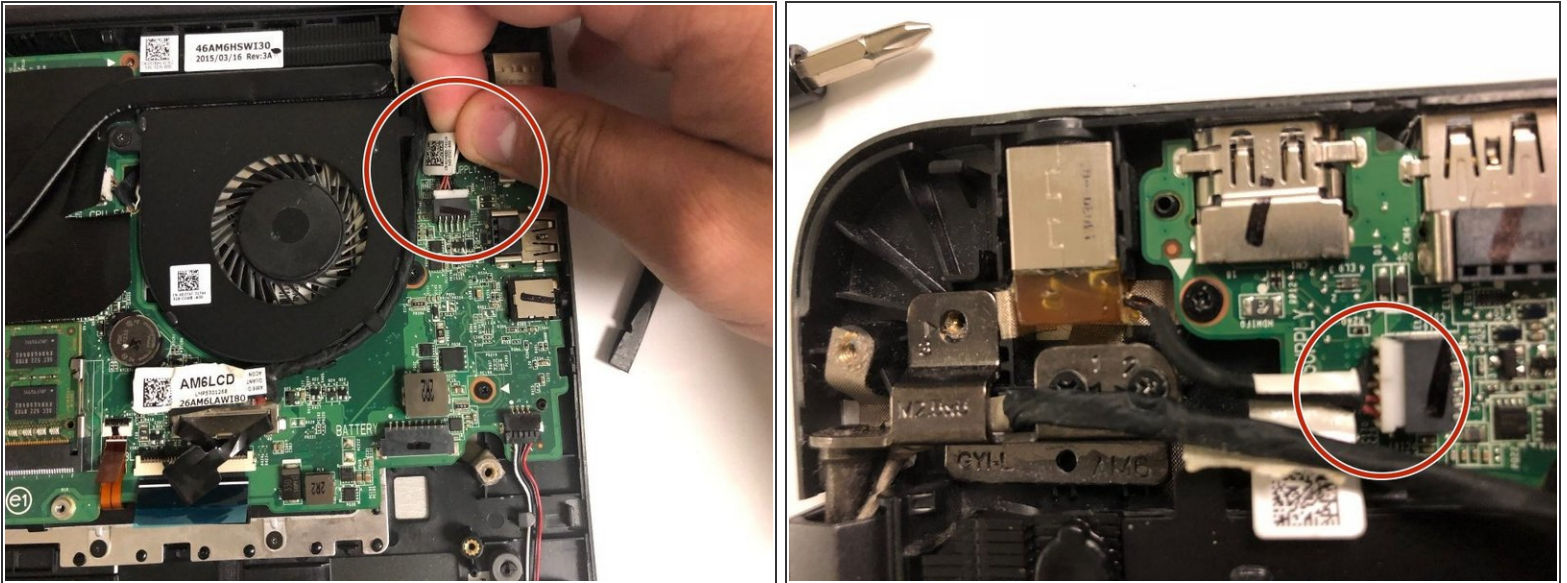
- Unscrew the six 2.5x6mm screws and remove them using a Phillips #1 screwdriver.
- Loosen the four 2x3mm captive screws at the bottom.
- ⓘ The four screws on the bottom are captive screws and cannot be removed.

Step 2



- Using the flat head side of the spudger separate the the back panel from the rest of the laptop.
- ⚠ When separating the bottom and right side of the case do not insert the spudger more than half an inch.

Step 3 — Power Port



- Grab the wires and lightly pull to remove the power port from the motherboard.

To reassemble your device, follow these instructions in reverse order.