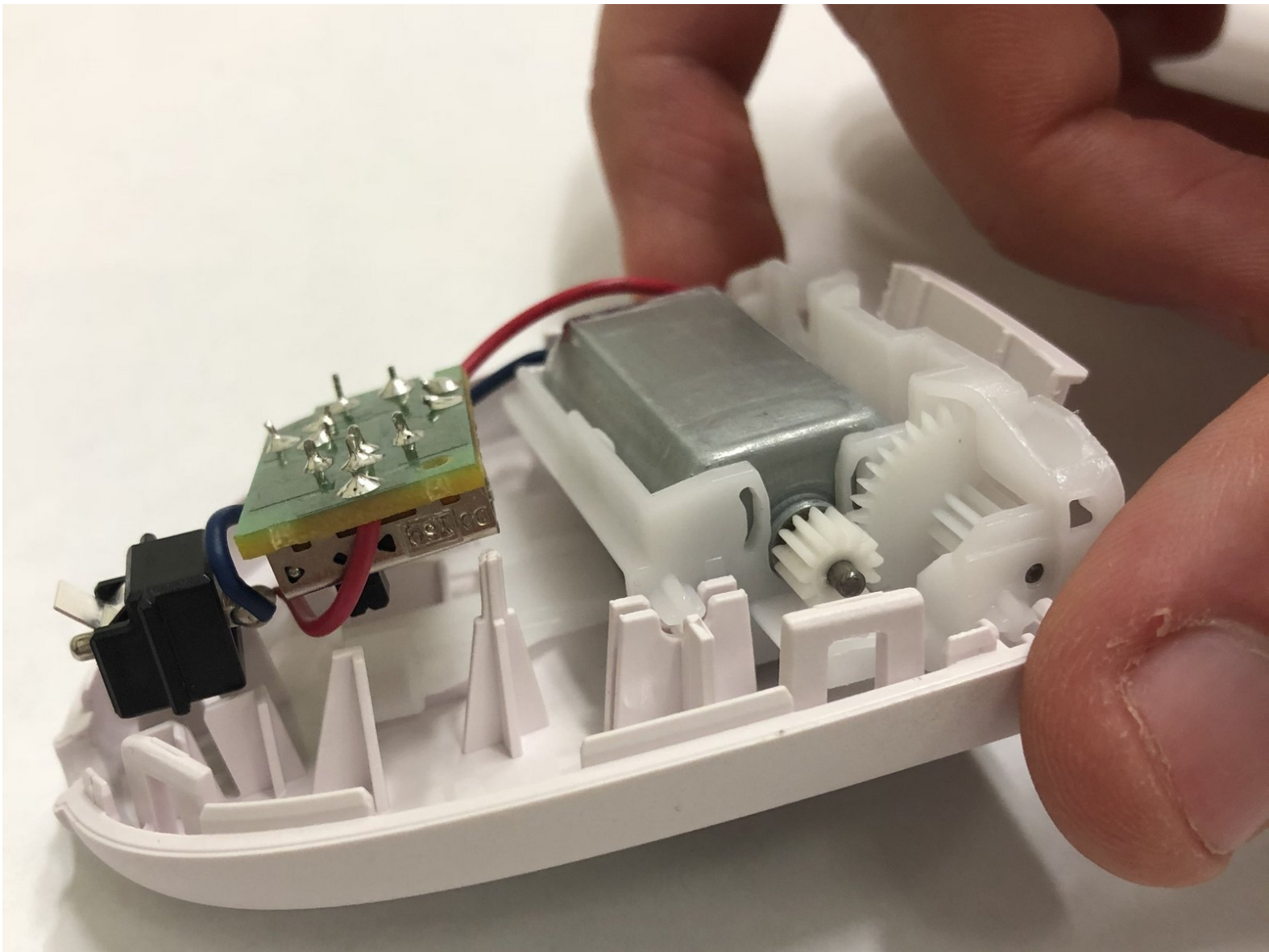




Philips Satinelle On/Off Switch Replacement

This guide will help you replace the on/off switch inside the device. If the button is not working it may be in the wrong positioning and it won't turn on.

Written By: Riannon Varney



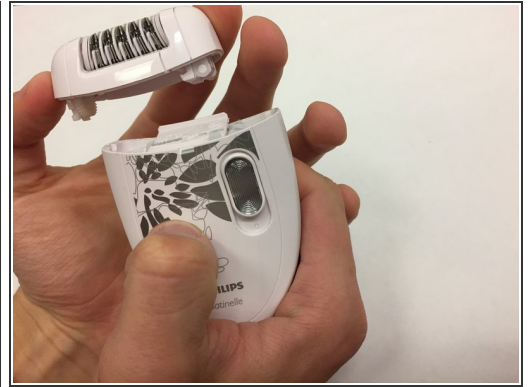
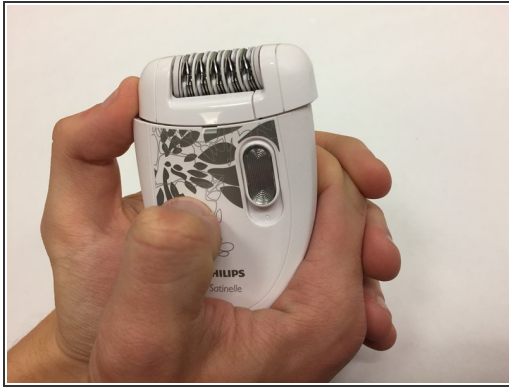
INTRODUCTION

If the epilator is plugged in and the on/ off button does not seem to be working, the switch may be in the wrong position. This guide will help you replace the switch and make sure it is in its right position for the epilator to turn on.

TOOLS:

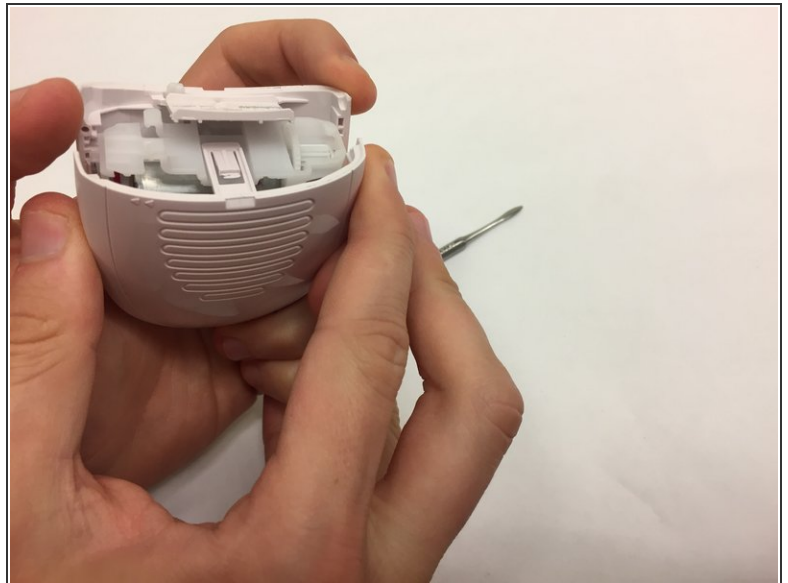
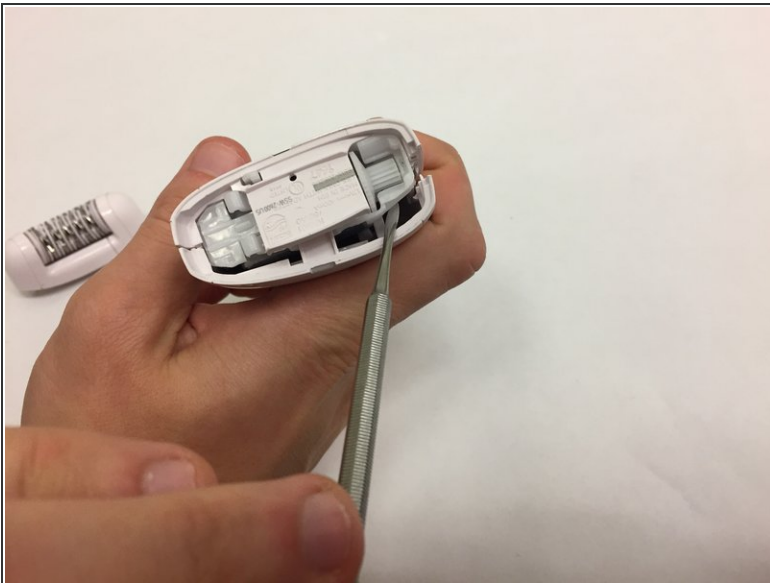
- [Metal Spudger](#) (1)
-

Step 1 — Plastic Cover



- Remove the head by pushing it to the right.

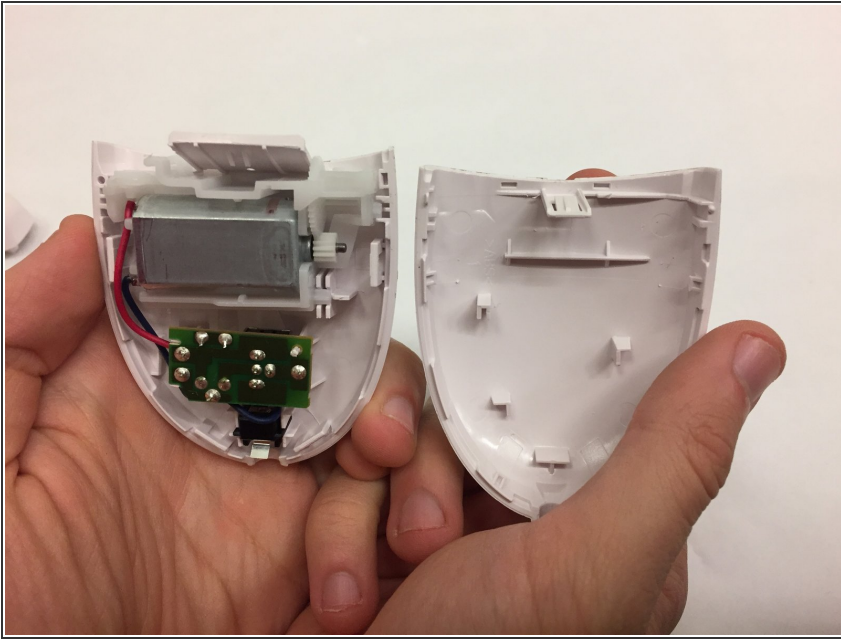
Step 2



- Use a metal spudger to pry open the casing.

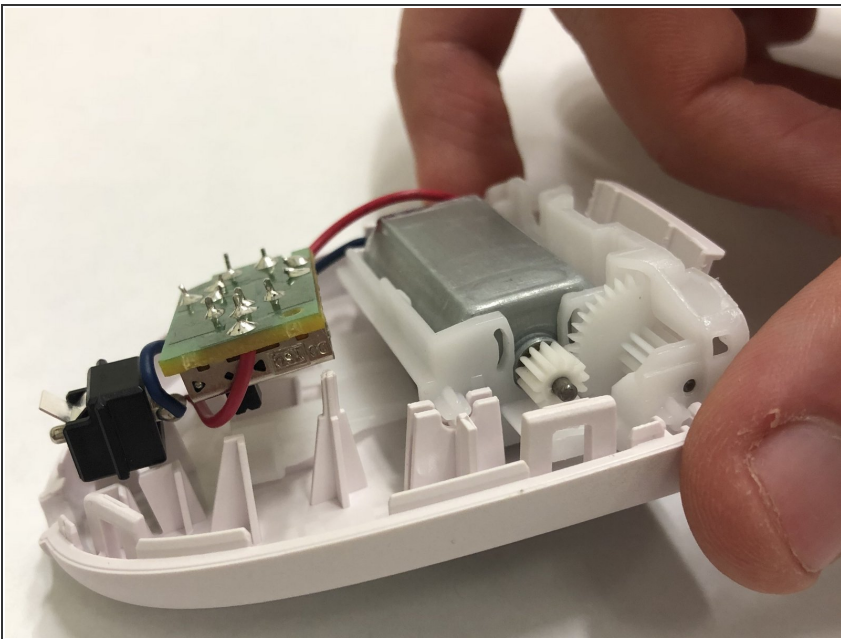
⚠ Caution: The epilator's internal components could be damaged if you shove the spudger in too far.

Step 3



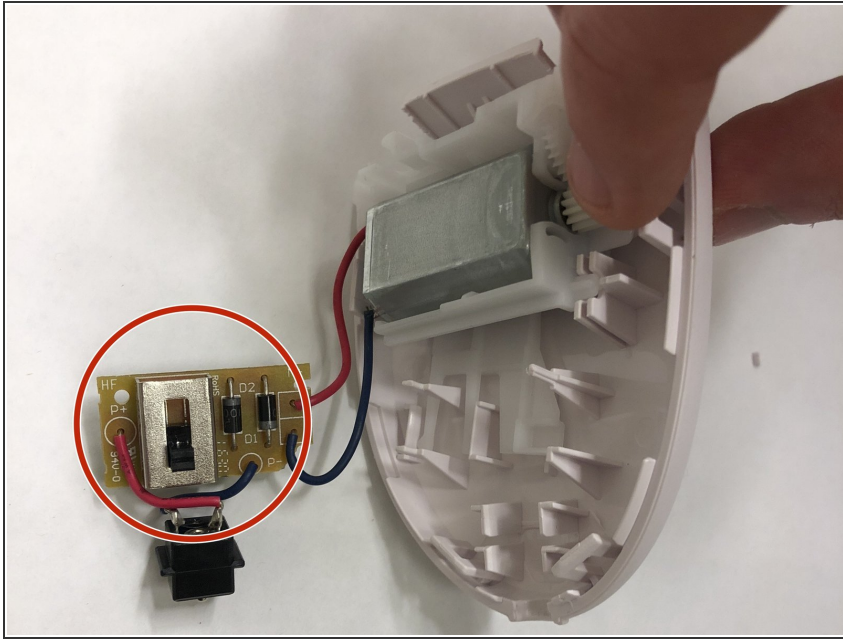
- Pull the plastic casing apart with your hands.
- ⓘ The plastic tab connecting the cover is likely going to break when you pull the device apart. This will not affect the operation of the epilator.

Step 4 — On/Off Switch



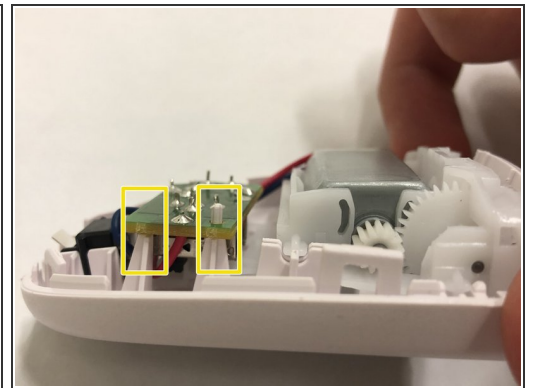
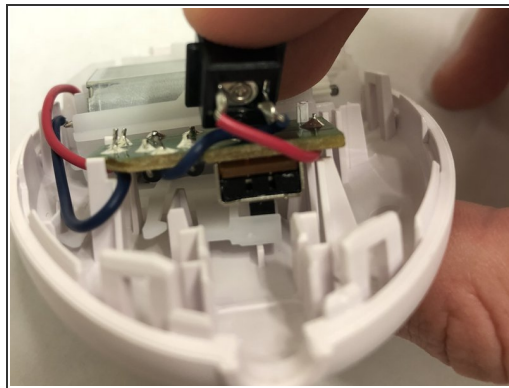
- Remove the green board and the black socket.

Step 5



- Slide the switch down toward the socket.

Step 6



- Put the components back into the frame

i If the switch won't line up with the plastic square, make sure the large switch on the front of the operator is in the "off" position.

To reassemble your device, follow these instructions in reverse order.

This document was last generated on 2019-01-14 11:13:36 PM.