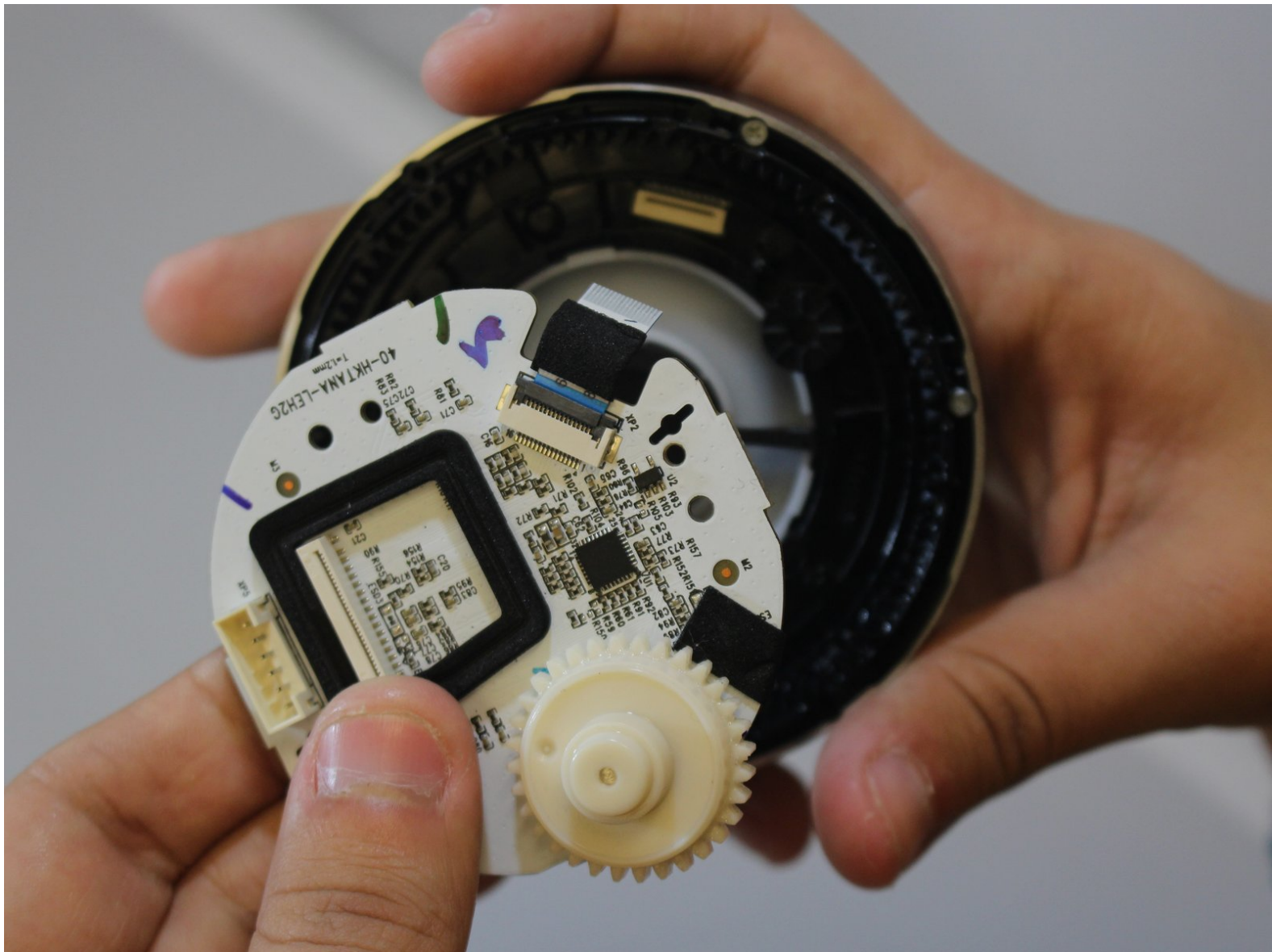




Harman Kardon Invoke LED Board Replacement

If the LED does not function you might need to change one of the LED or LED Board, so for this replacement you need a Phillips #2 screw driver,

Written By: Khalid Almutairi



INTRODUCTION

If the LED lights do not function after troubleshooting, you might need to change the LED Board. For this replacement you need a Phillips #2 screw driver and a metal spudger.

TOOLS:

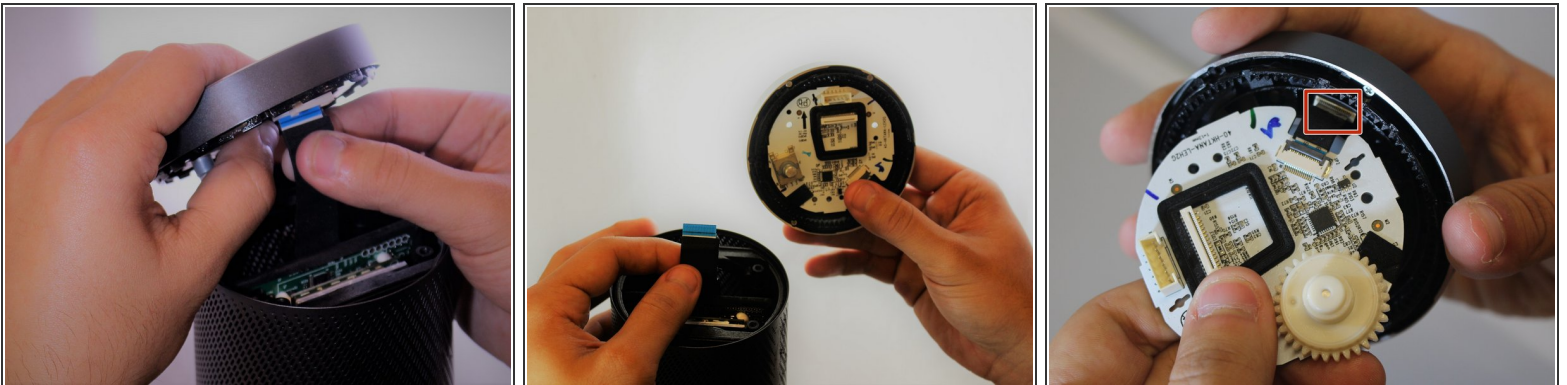
- [Metal Spudger](#) (1)
 - [Phillips #2 Screwdriver](#) (1)
-

Step 1 — LED Board



- Use a metal spudger to remove the top cover.
- Use a Phillips #2 screwdriver to remove three 17 mm screws.

Step 2



- Grip larger cable connected to LED board and pull volume wheel until both are disconnected from the cable.
- Pull lightly on the LED board to disconnect the smaller LED board cable from volume wheel.

To reassemble your device, follow these instructions in reverse order.

This document was last generated on 2019-07-18 12:22:09 PM.