



OLPC XO-1.5 Battery Replacement

This guide demonstrates how to install a replacement battery for the OLPC 1.5.

Written By: Daniel Nishi





PARTS:

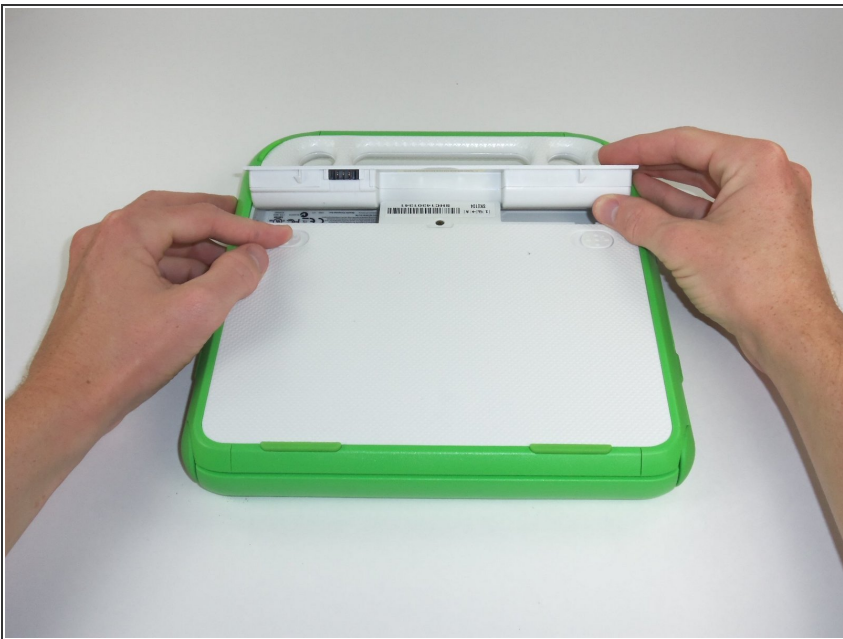
- [Compatible Replacement](#) (1)
-

Step 1 — Battery



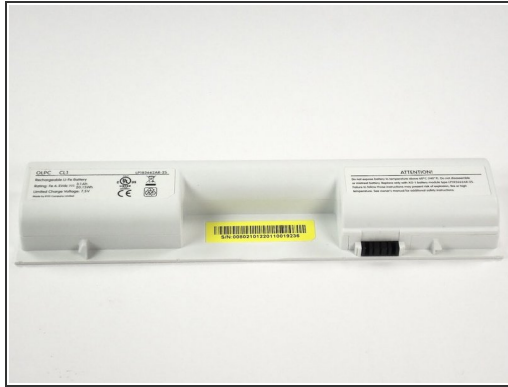
- Place the laptop upside down with the handle away from you.

Step 2



- Slide the tabs out, towards the green edges, to show the open lock symbol.
- ⓘ The right tab will stay in place, but the left tab must be held in position while you remove the battery.

Step 3



- Lift the middle of the battery to remove it.

To reassemble your device, follow these instructions in reverse order.