



# Power Macintosh G3 Blue and White Graphics Card Replacement

Malfunctioning or dead graphics card? Replace it!

Written By: Aaron Cooke



**TOOLS:**

- [Phillips #1 Screwdriver \(1\)](#)

**PARTS:**

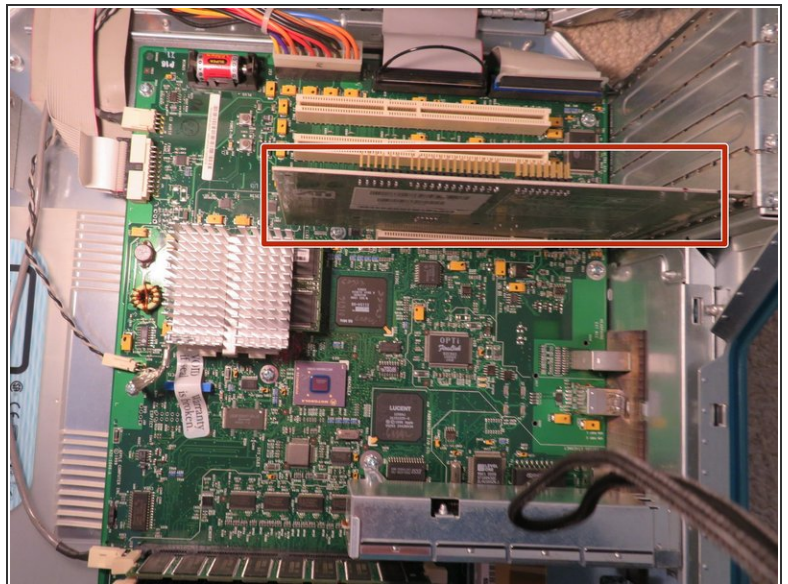
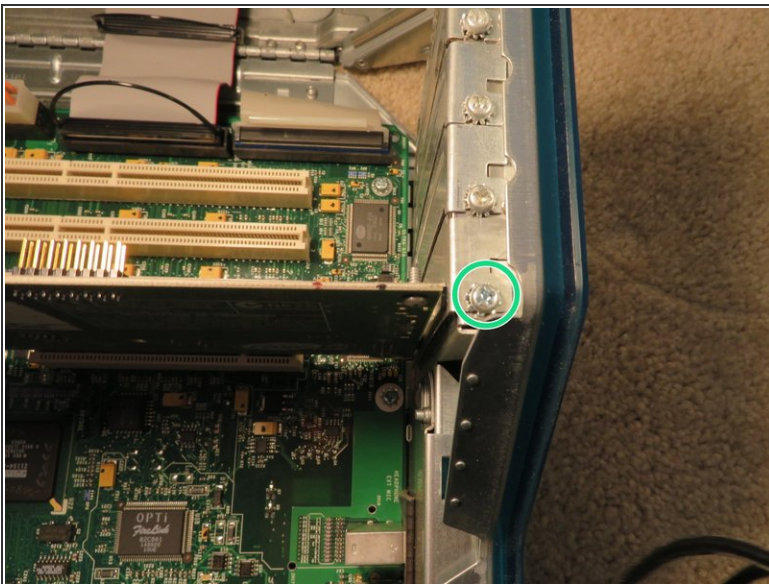
- [ATI Rage 128 PCI Video Card \(1\)](#)

## Step 1 — Graphics Card



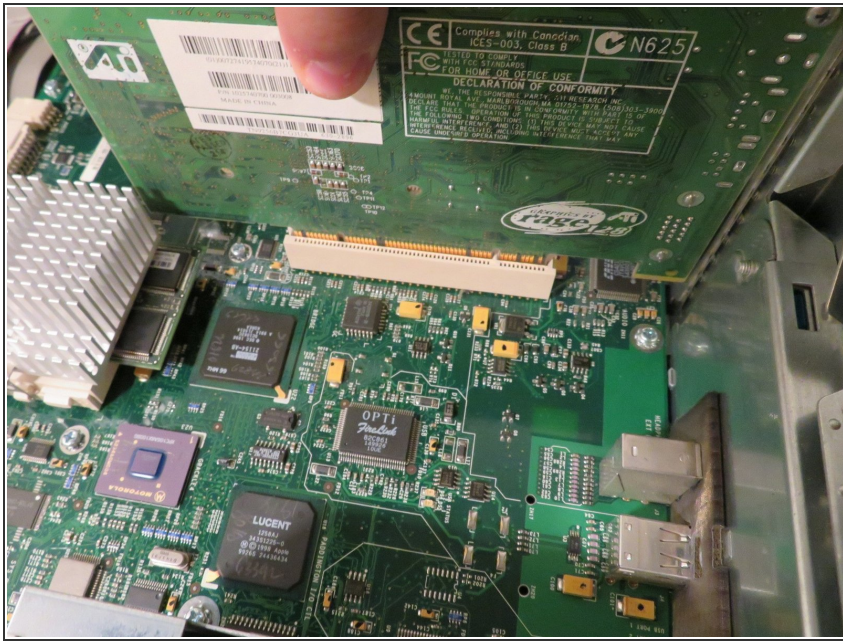
- ⓘ Unfortunately, I am unable to provide OG content for this step due to my PowerMac's outer case being severely damaged. Once I get my new outer case I will update this step.
- Lift the latch on the right side panel to reveal the internals.
- ⓘ If you are doing this on a hard surface I highly suggest you put a mat down between the door and the ground to prevent scratches.

## Step 2



- Remove the single Phillips #1 screw circled in the picture. Set it aside for later.
- ⓘ The graphics card is outlined in red in the second image, if you are confused on where this is.

### Step 3



- Lift the graphics card straight out of its PCI slot.
- ⚠ Be careful not to lift sideways, you can damage the PCI slot! Try your best to lift the graphics card straight up.

To reassemble your device, follow these instructions in reverse order.

This document was last generated on 2019-07-30 03:27:33 PM.