



BLU WIN HD LTE Camera Replacement

This guide will explain how to remove the camera from the BLU WIN HD LTE.

Written By: Taelar Tritton-Bowman



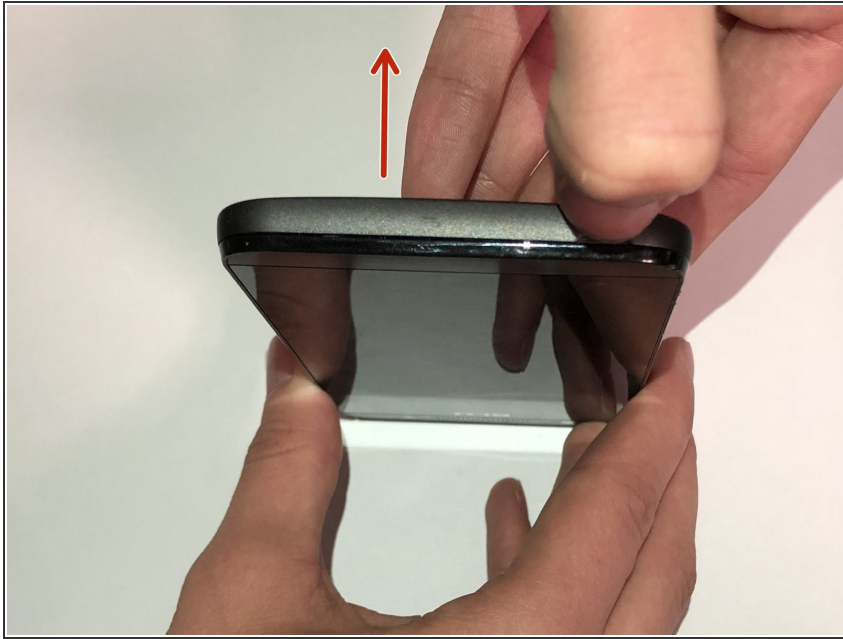
INTRODUCTION

The Camera is form to capture images or videos and bring you memories of your family. You are able to be creative with the photography of it.

TOOLS:

- [JIS #00 Screwdriver](#) (1)
 - [Spudger](#) (1)
-

Step 1 — Back Case



- Pry the back cover from the bottom of the phone, pulling outwards and upwards.

Step 2



- Fully remove the cover and set aside in a safe place.

Step 3 — Frame Cover



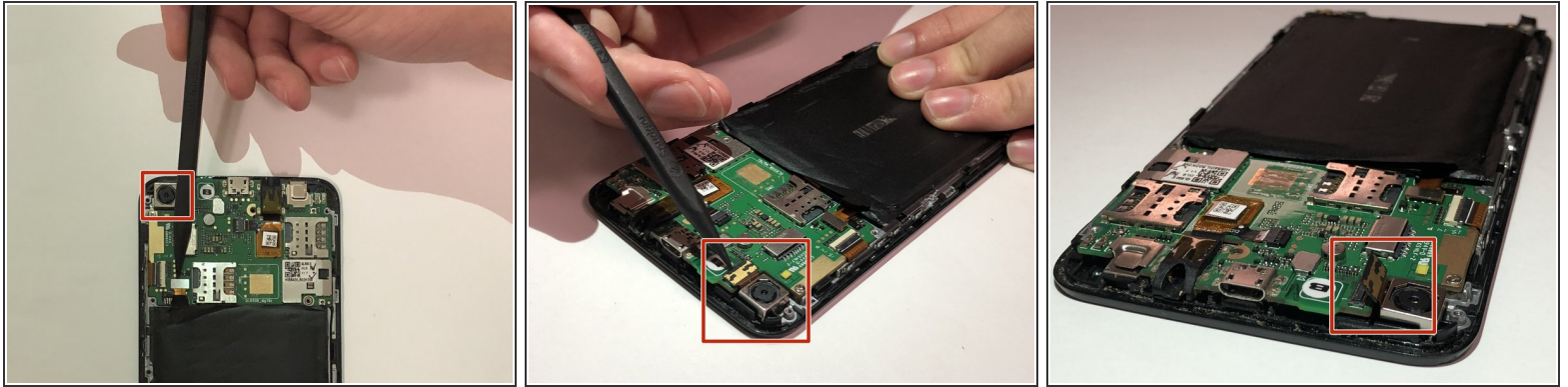
- Remove all the nine 2mm screws using the JIS #00 Screwdriver.

Step 4



- Pry the frame off using the spudger pulling upwards going to different areas around the device.
- ⓘ The back cover is secured by glue. Removal could be more difficult than expected.

Step 5 — Camera



- Pry off the low profile connector located on the right side of the camera device.

Step 6



- Pull the camera out.

To reassemble your device, follow these instructions in reverse order.

This document was last generated on 2019-07-18 03:51:04 AM.