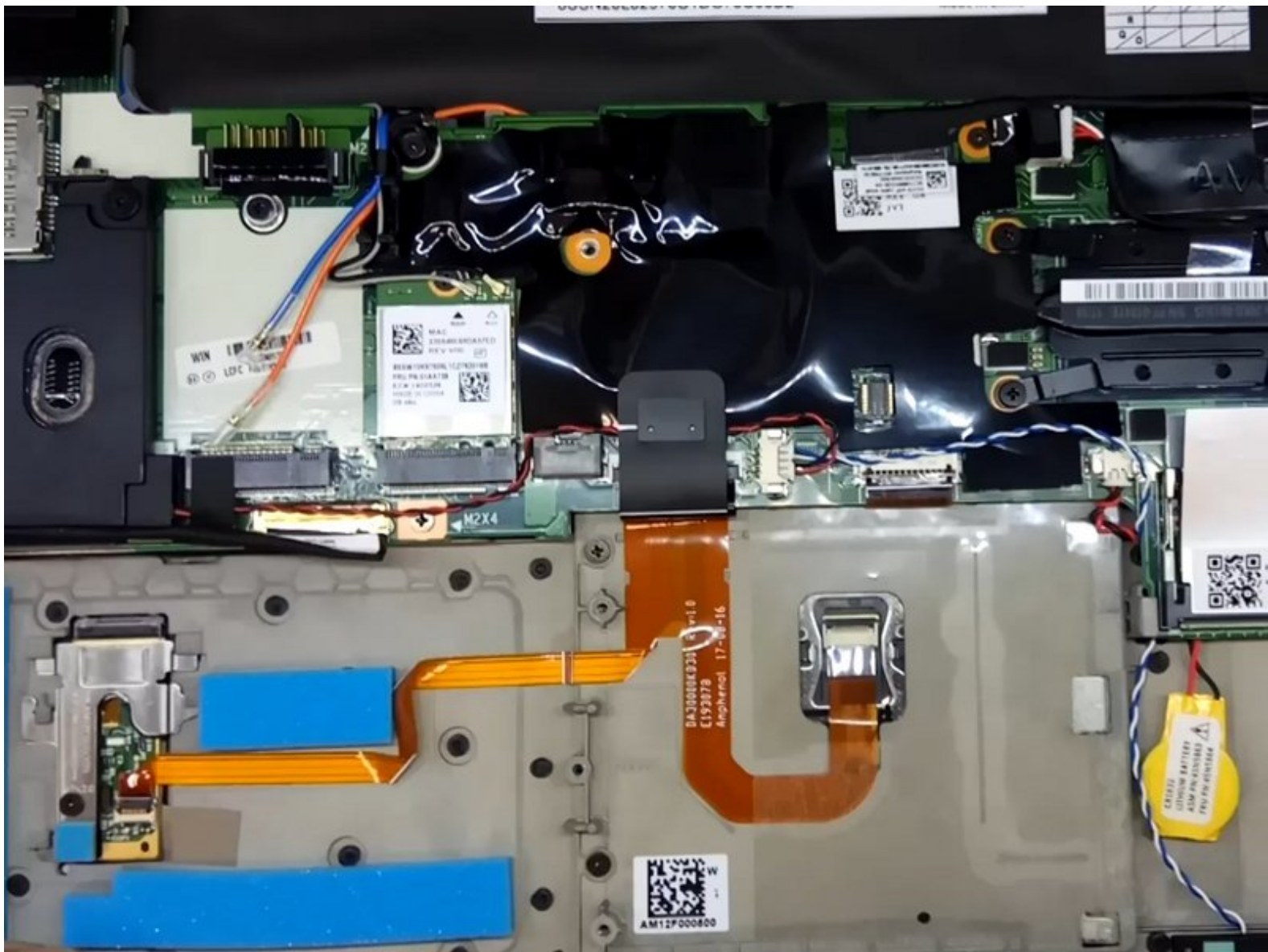




ThinkPad Unboxing Teardown

CPU: AMD PRO A12-9800B 2.70 GHz Chipset: AMD SoC Memory: SK hynix DDR4-8GB-2400z
HDD: Samsung NVMe SSD 256GB GPU AMD Radeon R7 Graphics OS: Windows 10 Pro

Written By: IT FIX





TOOLS:

- [Pro Tech Toolkit \(1\)](#)
-

This document was last generated on 2019-06-16 06:00:55 AM.