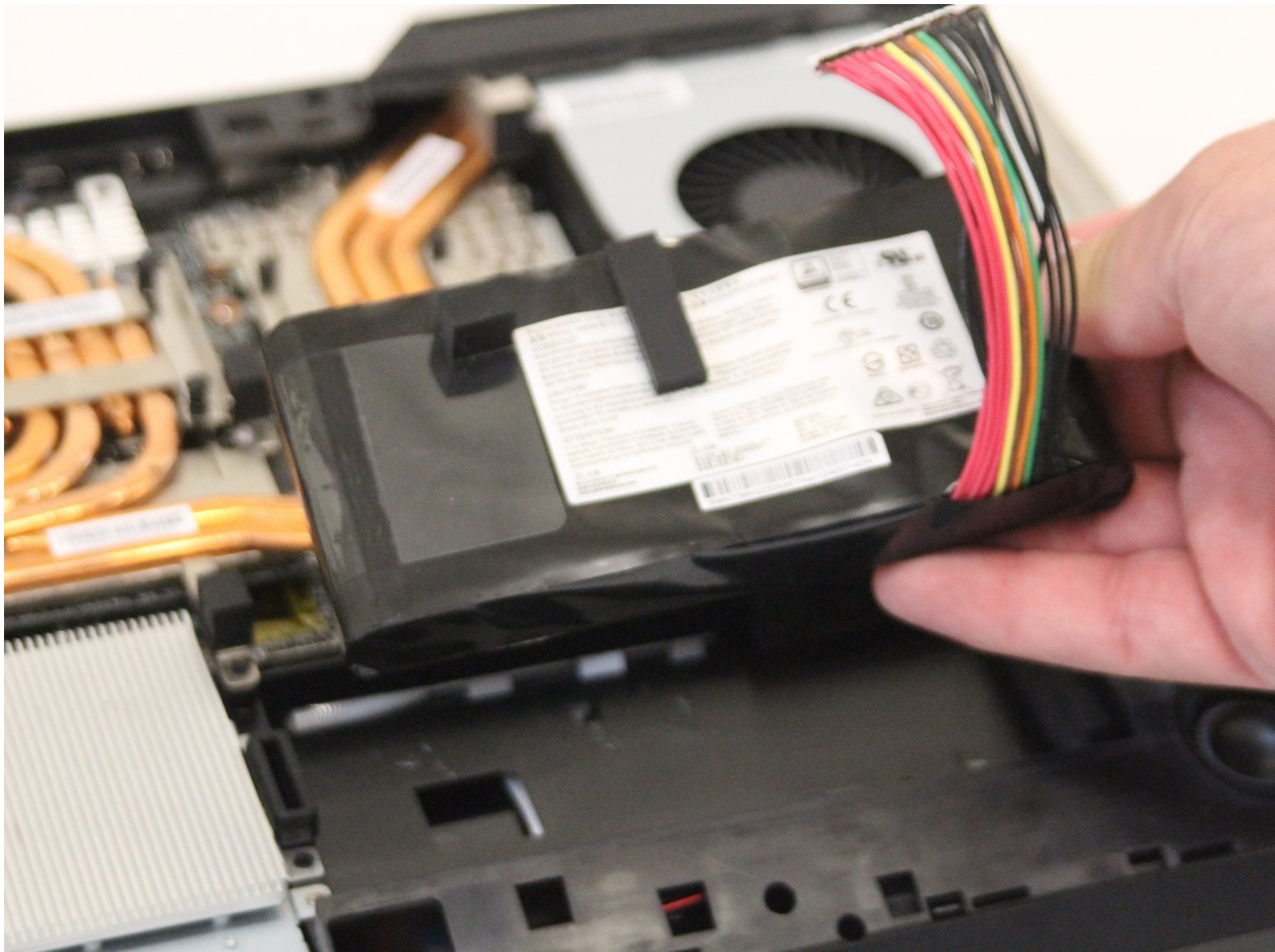




MSI GT75VR 7RF Titan Pro Battery Replacement

How to locate, access, and replace the battery of your MSI GT75VR 7RF Titan Pro laptop.

Written By: Alex Wester



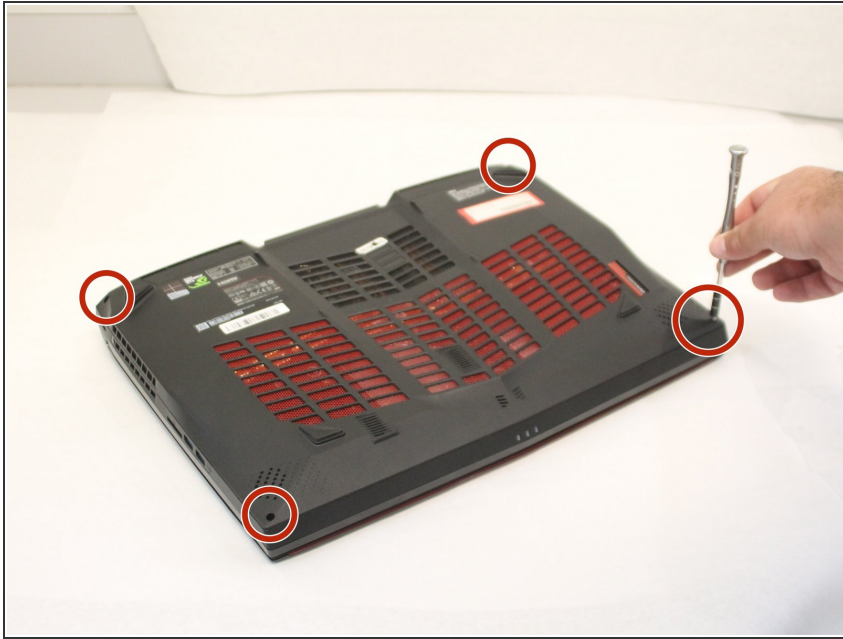
INTRODUCTION

The battery is the energy source for this computer. A battery can lose the amount of charge that can be obtained over time. This will lead to the need of a new battery.

TOOLS:

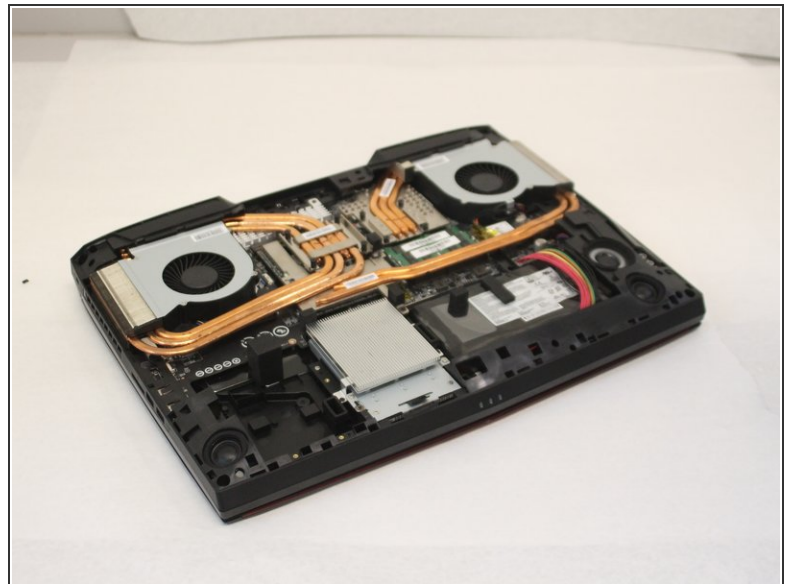
- [Phillips #0 Screwdriver](#) (1)
 - [Spudger](#) (1)
-

Step 1 — Battery



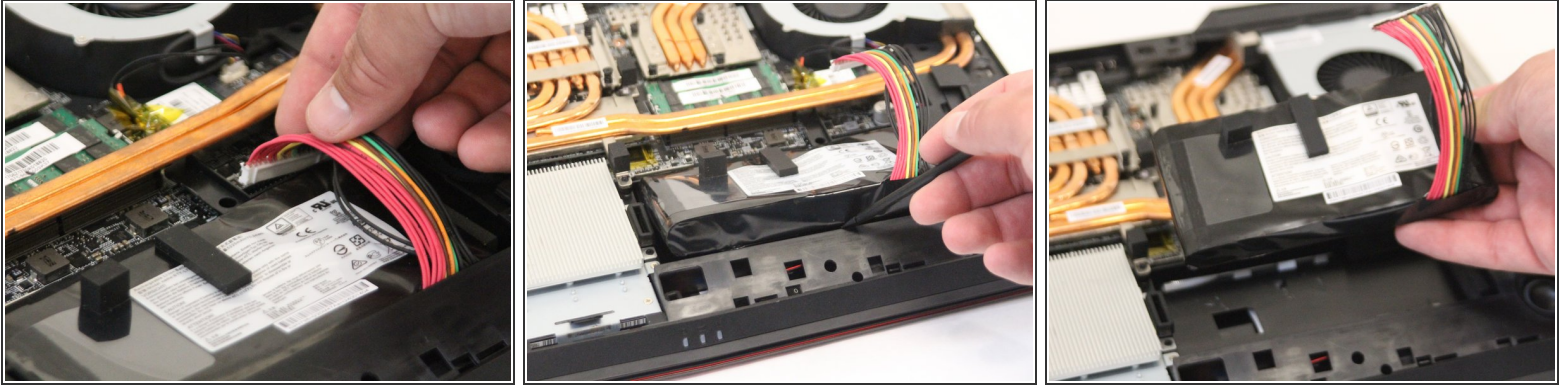
- Remove the four screws from the back cover using the Phillips #0 screwdriver. Screws are 0.5 inches long.

Step 2



- Pop off the back cover of the laptop using the black nylon spudger.

Step 3



- Unplug the battery, then using the black nylon spudger, carefully remove it from the laptop. It is held down by an adhesive, but can be safely removed without damaging the device.

To reassemble your device, follow these instructions in reverse order.