



# Canon Selphy CP720 Paper Cassette Replacement

This guide demonstrates how to replace the paper tray for the Canon Selphy CP720.

Written By: Peter Ely



## **INTRODUCTION**

This guide demonstrates how to remove, load, and replace the Paper Cassette for the Selphy CP720. This is a simple yet critical step to printing with the device.

## Step 1 — Paper Cassette



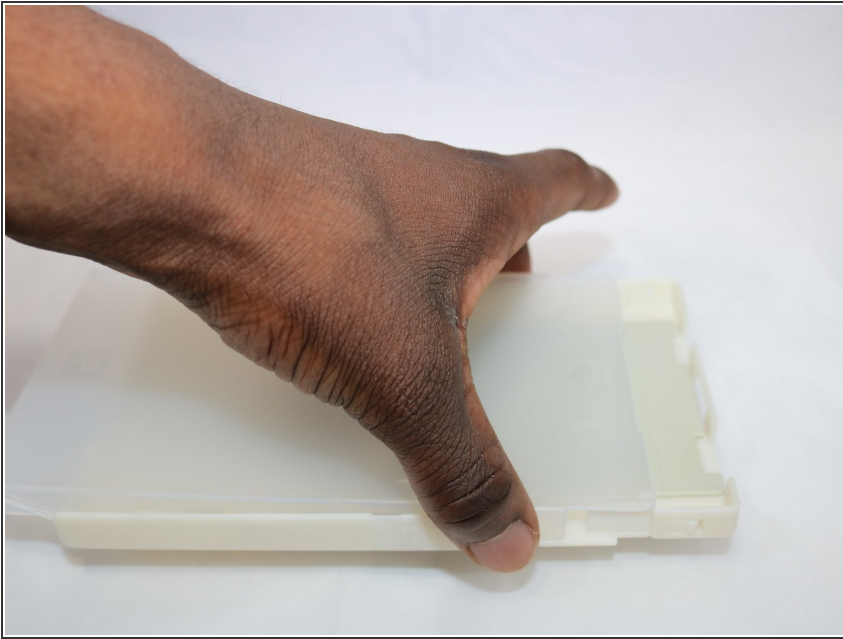
- ⓘ This configuration allows printing but not reloading of the paper cassette. The cassette needs to be removed before paper can be put inside.

## Step 2



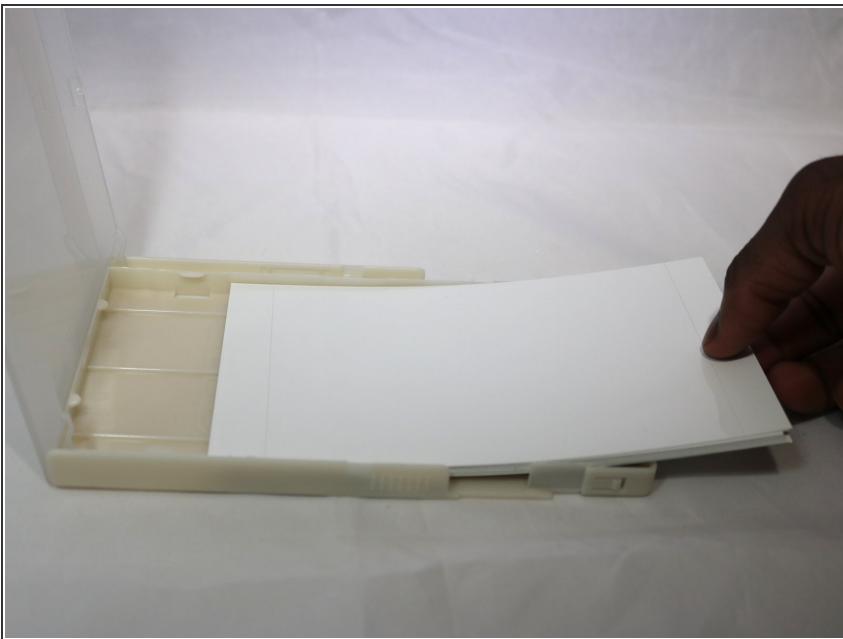
- Set the printer on its back so that the Paper Cassette sticks straight up in the air.
- Pull the Paper Cassette out of the printer. It is guided by two studs that fit into the grooves on the underside of the cassette.

### Step 3



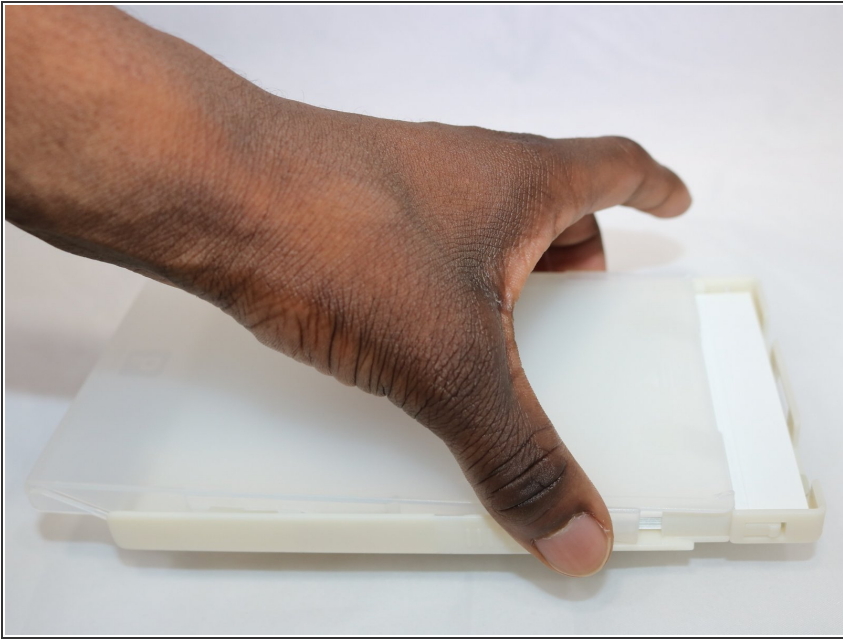
- Slide the translucent top cover of the Paper Cassette back to expose the paper storage area.
- With the top half pulled back, lift the glossy side and open the Cassette.

### Step 4



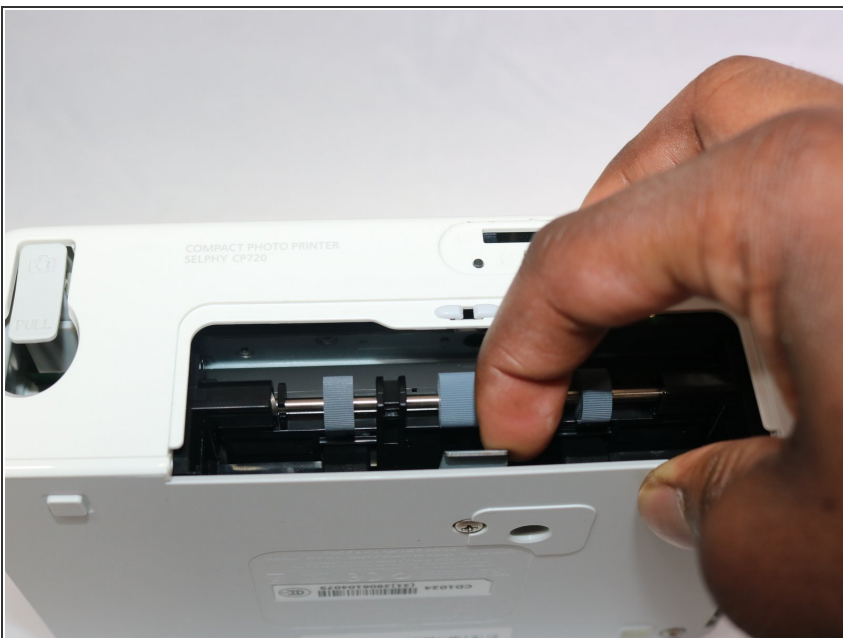
- Put no more than 12 pages in the cassette

## Step 5



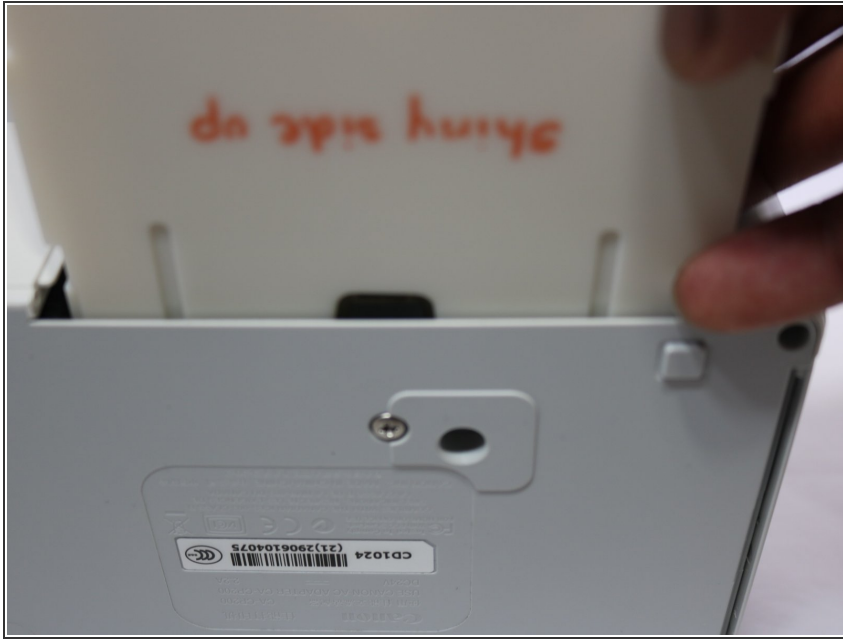
- Slide the upper clear plastic part back by gripping it on either side and pulling it backward.

## Step 6



- Make sure the metal tab on the printer will fit over the paper in the Cassette.

## Step 7



- Push the cassette into the printer, with the glossy side up. Make sure that the Cassette is being guided by the studs in the mouth of the printer.

There, your Selphy CP720 has been loaded with paper.

This document was last generated on 2019-01-15 06:22:05 AM.