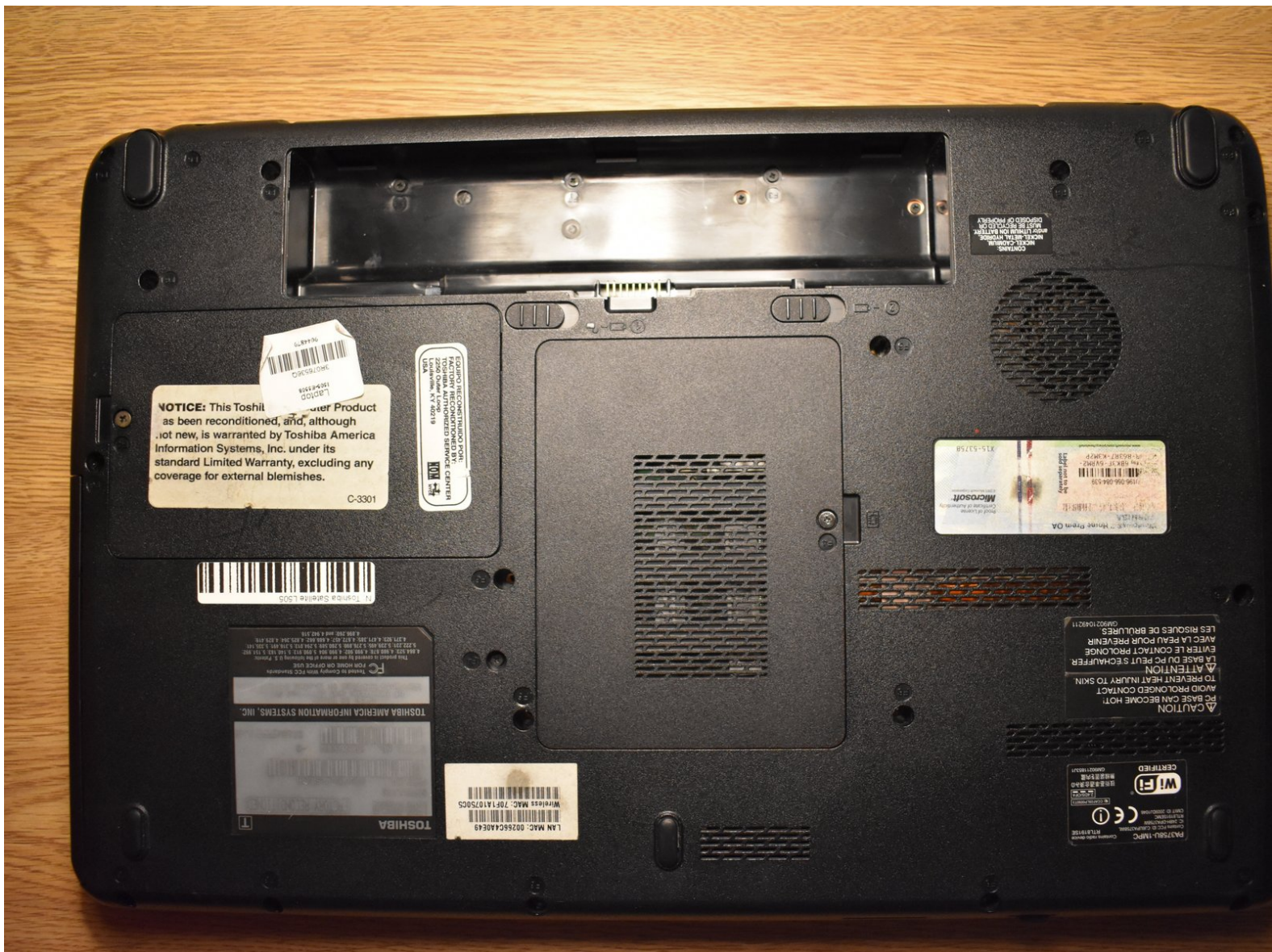




# Toshiba Satellite L505 Laptop Hard Drive Replacement

The purpose of this guide is to replace the hard drive on the Toshiba Satellite L505 Laptop

Written By: Matias



---

## INTRODUCTION

The removal of the hard drive is a multi-step process which is simplistic at first glance, but can present a challenge if instructions are not carefully followed.

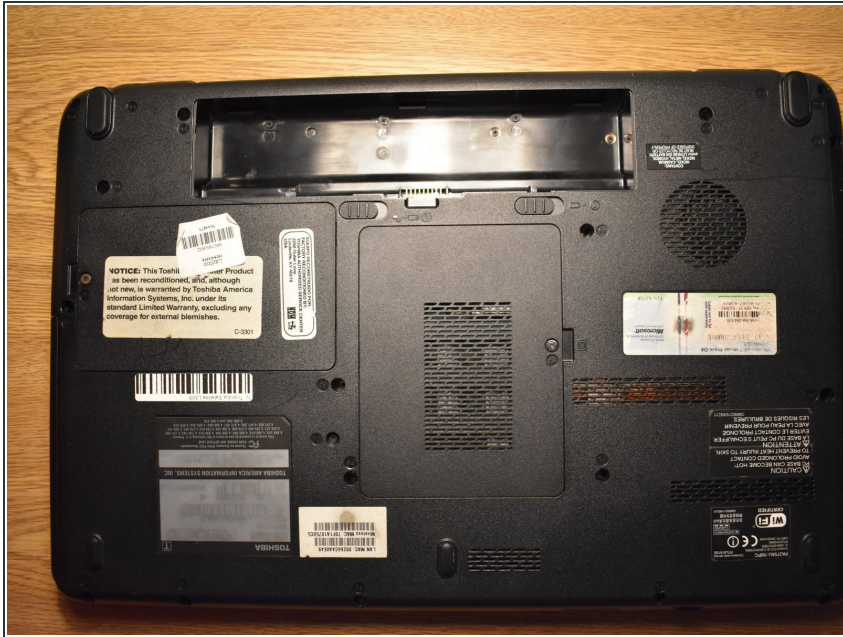
---

### TOOLS:

- [Phillips #1 Screwdriver](#) (1)
-



## Step 1 — Hard Drive



- Turn the laptop upside down.

## Step 2



- Unscrew the screw using a Phillips #1 screwdriver.
- Lift and remove the cover from the device.

## Step 3



- Unscrew the circled screw and set it aside.
- With the laptop oriented with the battery at the top, slide the hard drive component to the left until it clicks.
- Gently lift up to remove the hard drive from its compartment.

To reassemble your device, follow these instructions in reverse order.

This document was last generated on 2019-08-24 07:26:25 PM.