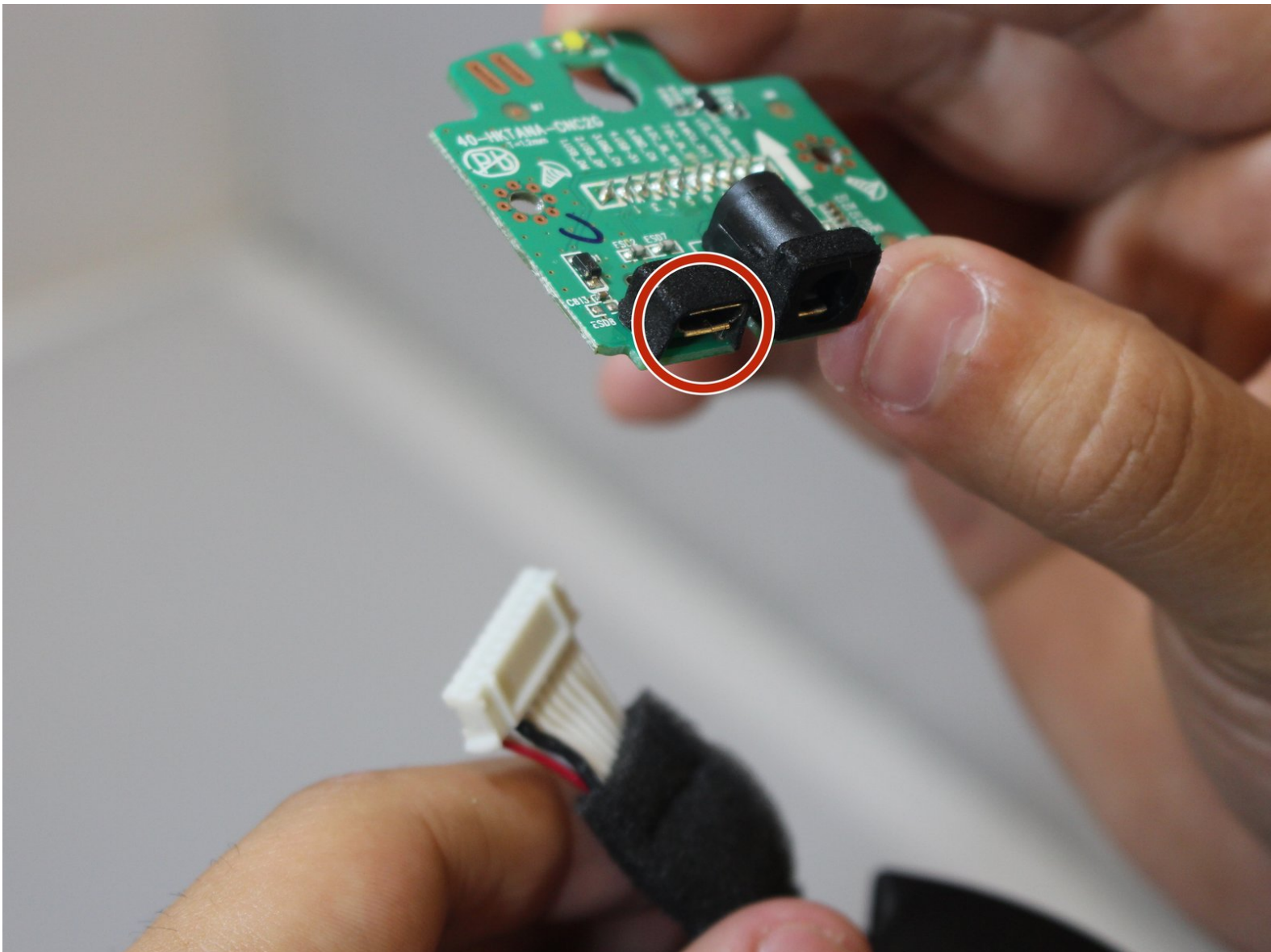




Harman Kardon Invoke Service Port Replacement

If your Invoke is not connecting to your computer in order to be serviced, there might be a problem with the service port and should be replaced.

Written By: Angel A. Grageda



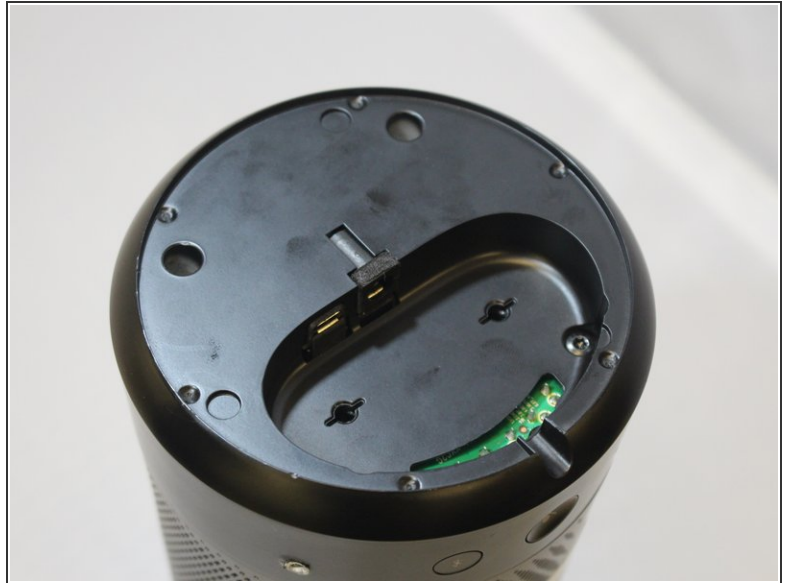
INTRODUCTION

If your Invoke is not connecting to your computer in order to be serviced, there might be a problem with the service port and should be replaced. For this replacement you will need a metal spudger and a #10 Torx screwdriver.

TOOLS:

- [Metal Spudger](#) (1)
 - [T10 Torx Screwdriver](#) (1)
-

Step 1 — Remove the rubber base



- Use a metal spudger to remove the rubber bottom.

Step 2 — Remove the base screws



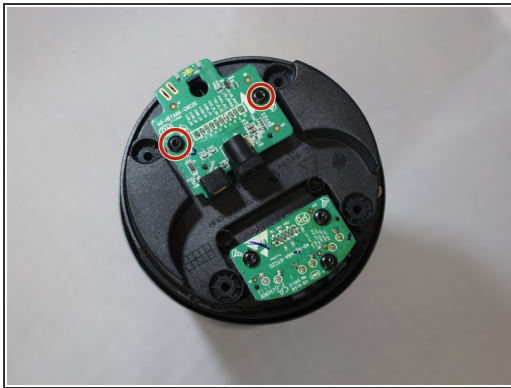
- Use a #10 Torx screwdriver to remove four 14 mm screws.

Step 3 — Remove the base



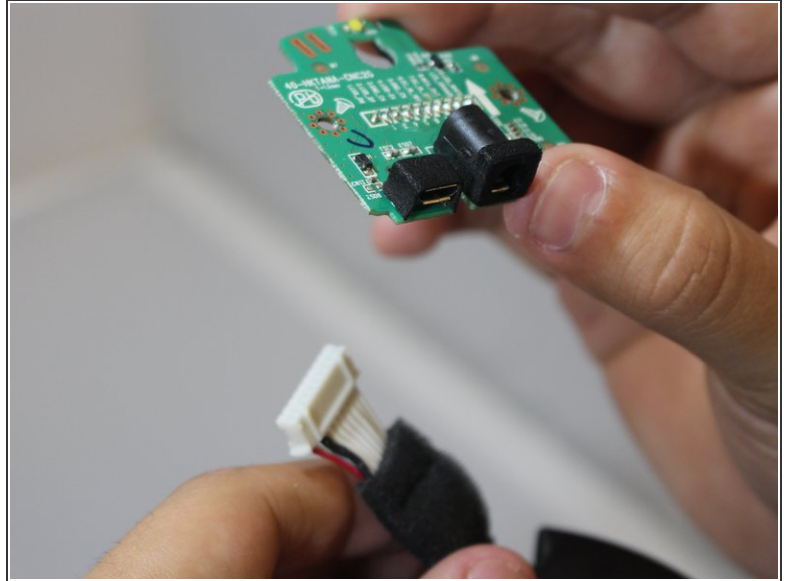
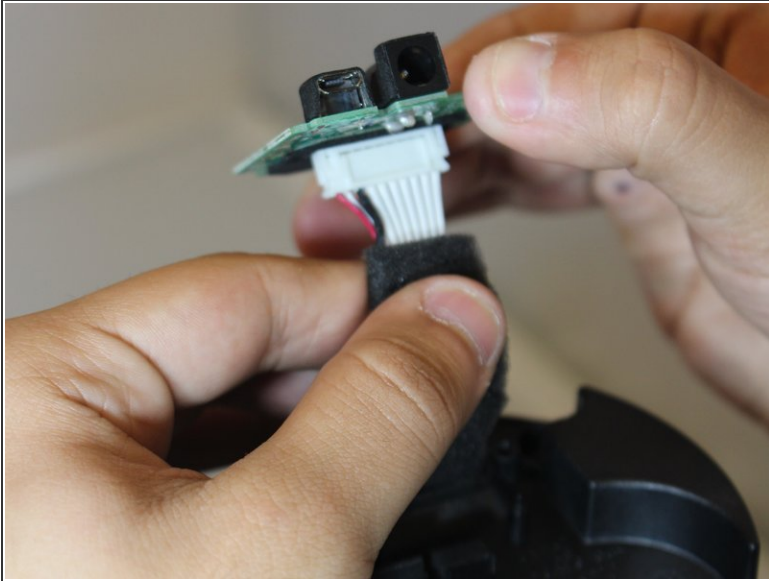
- Firmly grip the bottom and wiggle upwards to remove the base.

Step 4 — Removing the board



- Use a #10 Torx screwdriver to remove two 10 mm screws from board attached to ports.
- Pull board up lightly.

Step 5 — Disconnect the board



- Pull cable to disconnect board from device.
- ⓘ For replacement of service port, you will have to replace whole board that the port is attached to.

To reassemble your device, follow these instructions in reverse order.

This document was last generated on 2019-04-03 01:40:06 PM.