



# Huawei Pronto LTE Battery Replacement

Replace the battery in the Huawei Pronto LTE.

Written By: Crystal Edwards



---

## INTRODUCTION

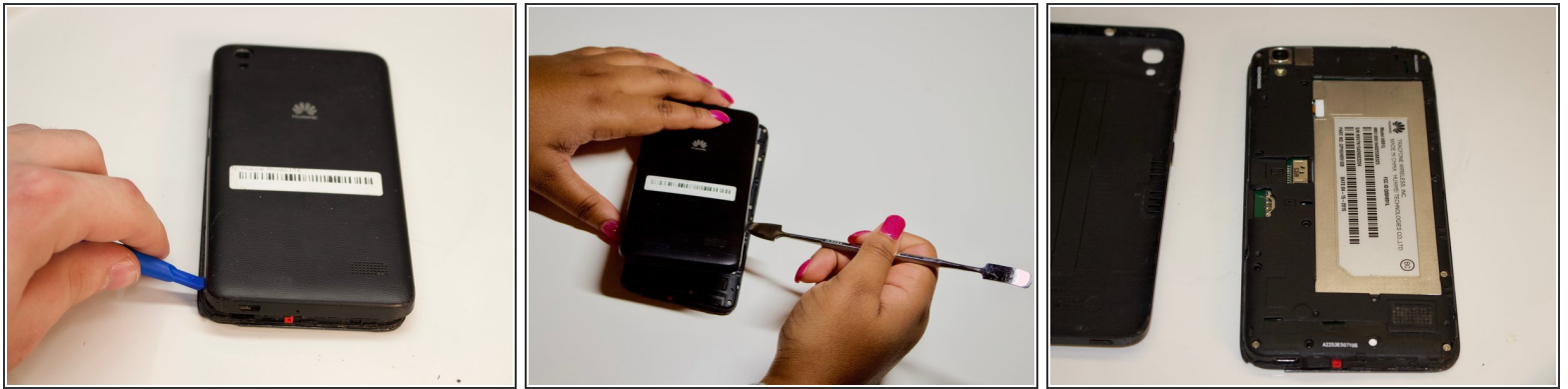
The battery is an essential component for the phones ability to function. This guide will clearly show you how to remove the battery without damaging other parts of the phone. Before you start please have the correct tools listed underneath as these tools will ensure a successful battery replacement.

---

### TOOLS:

- [iFixit Opening Tools](#) (1)
  - [JIS #000 Screwdriver](#) (1)
  - [ESD Safe Tweezers Blunt Nose](#) (1)
  - [Metal Spudger](#) (1)
-

## Step 1 — Battery



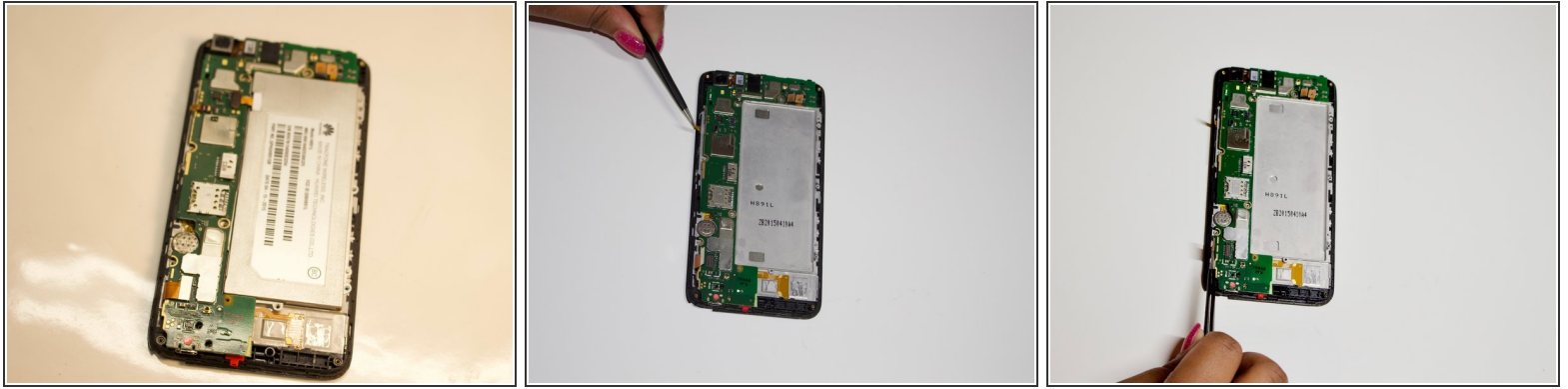
- Begin to lever up the back cover of your Huawei Pronto LTE, using an Opening Tool.
- ⓘ If you are experiencing difficulties with removing the cover, use the metal spudger.
- Once all corners of the cover are levered, gently lift the back cover off.

## Step 2



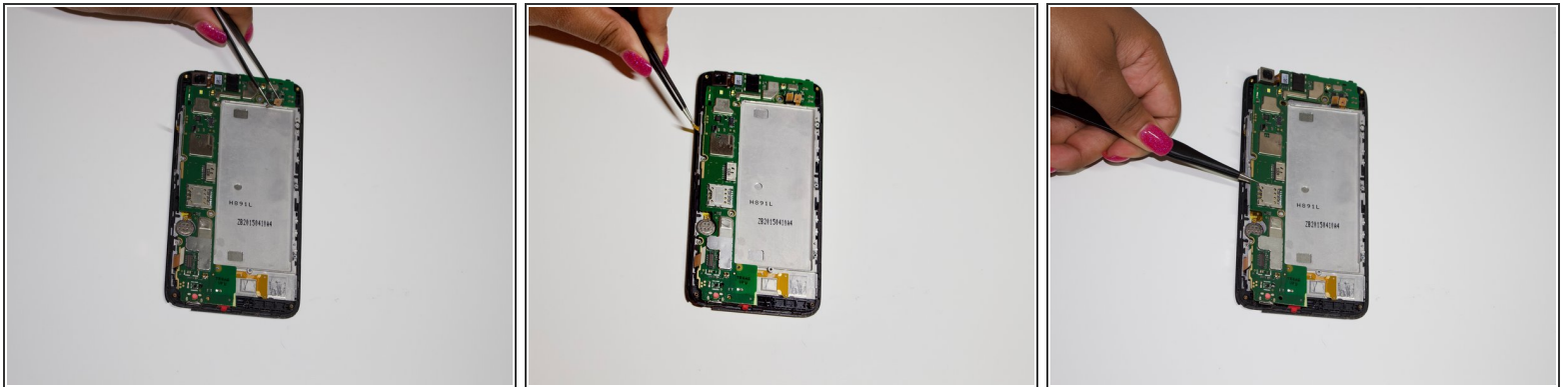
- Unscrew all 15 screws on the back of the phone using the #000 Phillips head screwdriver, and remove the rear frame.
- ⓘ Make sure to hold down the phone.
- Gently lift the inner cover using the metal spudger.


### Step 3



- Detach the yellow latches along the sides to remove the motherboard.

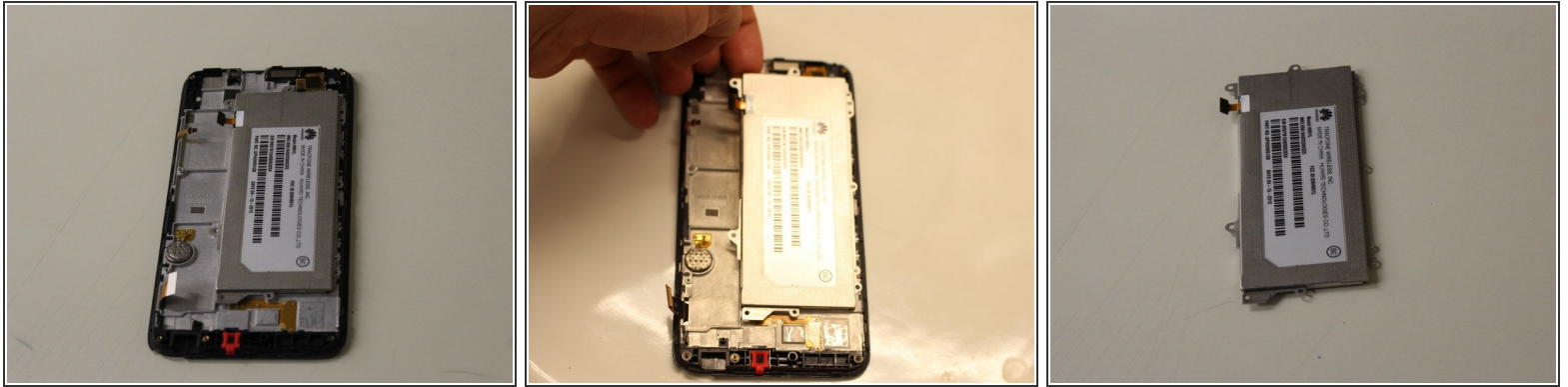
### Step 4



 Make sure all latches are detached and that there are no extra screws, to ensure safe removal of the motherboard.

- Gently remove the motherboard from the device with the tweezers.

## Step 5



- Once the motherboard is removed there should be nothing in the way of the battery.
- Lift the battery from the top left corner.

To reassemble your device, follow these instructions in reverse order.

This document was last generated on 2019-07-16 02:27:25 PM.