



LeapFrog LeapPad Ultimate Battery Replacement

Replacing the battery will bring the device back to life for kids to be entertained.

Written By: Fernando Lozano-Garcia



INTRODUCTION

To replace the battery is a mild task to get to and can take up to 15 minutes to complete. A far warning, patience is key because the device itself is difficult to open . The only tools that will be needed will be a screwdriver and some tweezers .

TOOLS:

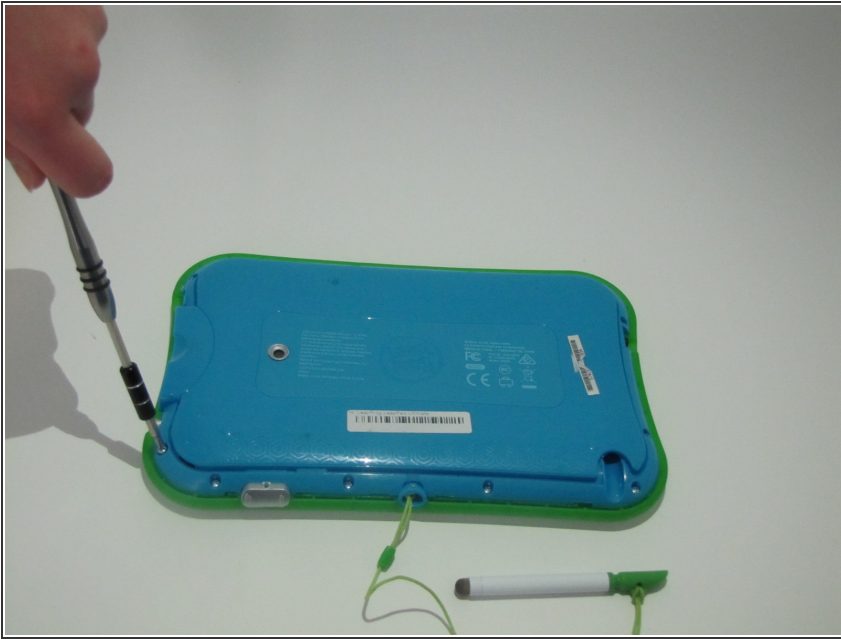
- [Tweezers](#) (1)
 - [Phillips #1 Screwdriver](#) (1)
 - [iFixit Opening Tools](#) (1)
-

Step 1 — Battery



- Flip over the Pad to its back side to begin the removal of the back panel.
- Remove the blue rim along the edge of the device. It runs along the green silicone lining.
 - ⚠ This is very difficult to remove, so do be patient. To help remove the seal both the metal and the plastic spudgers may be used.
- ⓘ Remove the pen from its place before starting to avoid tangling.

Step 2



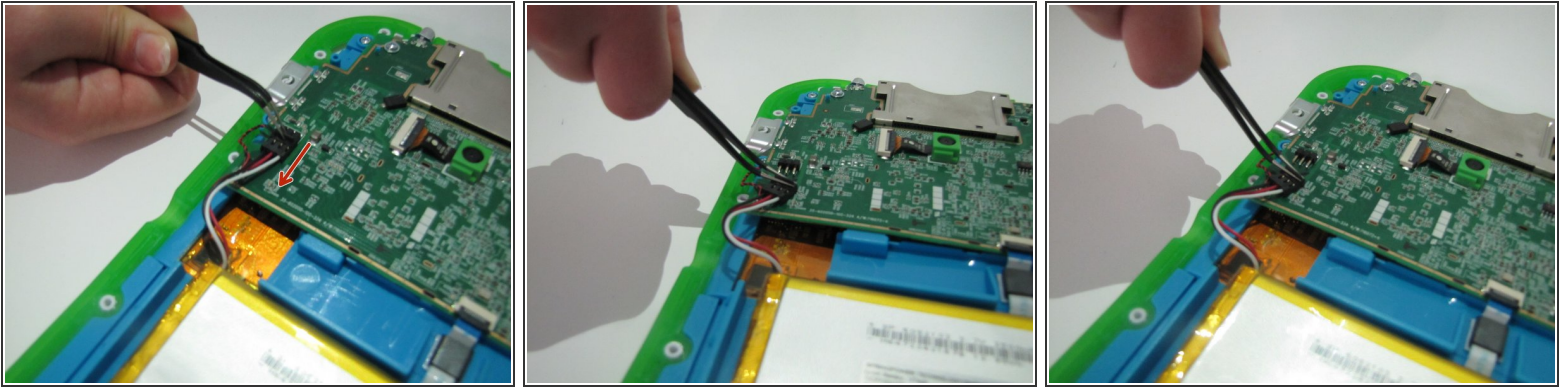
- Once the blue rim is removed, the 12 screws will be visible.
- Use a Phillips #1 screwdriver to unscrew all 12 screws.

Step 3



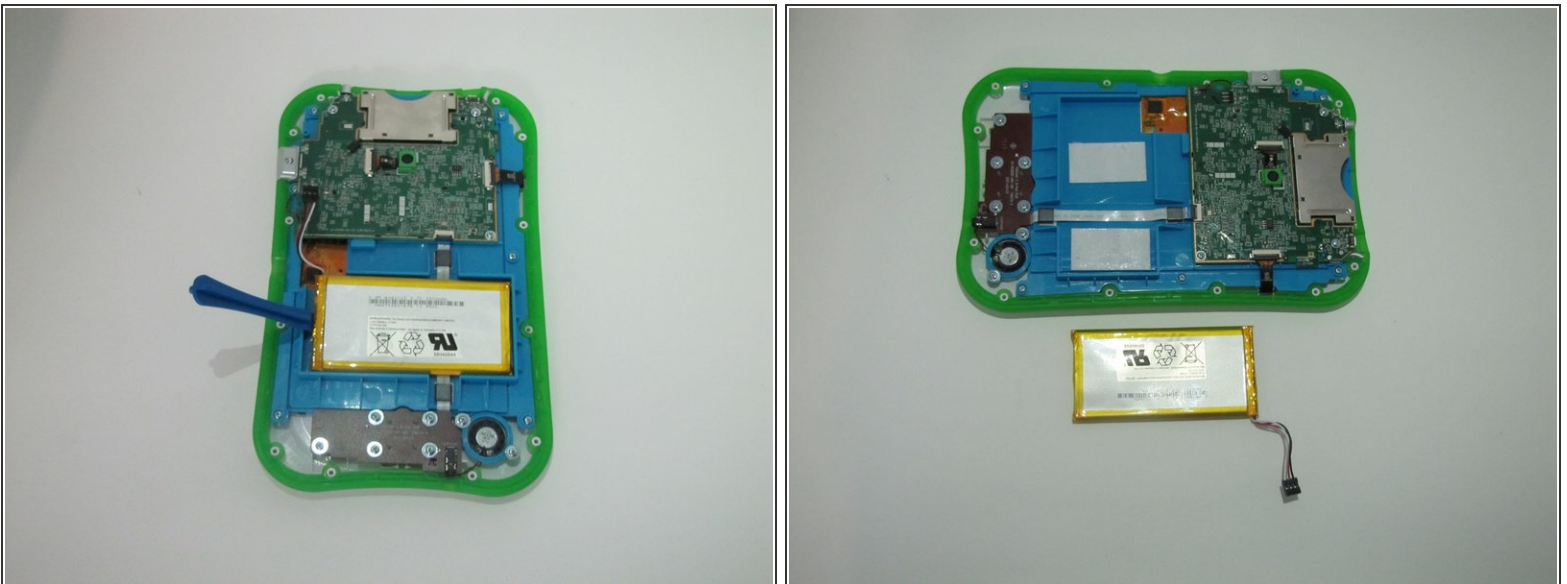
- Remove the back panel of the device exposing the internal components of the device.
- Once the internal components are exposed locate the point which connects the battery to the motherboard.

Step 4



- i** The point connecting the battery and motherboard is made up of three wires, red, white, and black.
- The plastic portion on the motherboard's end will have a small notch on top. Pull the notch in the direction towards the battery with the curved tweezers. This will disconnect the wires from the motherboard.

Step 5



- Carefully remove the battery from the LeapPad, use the plastic spudger to gain leverage, if needed.

To reassemble your device, follow these instructions in reverse order.

