



Alpine MRV-M500 Circuit Board Replacement

Replace the circuit board in an Alpine MRV-M500.

Written By: Eric Gaulke



INTRODUCTION

The circuit board in the MRV-M500 contains all the electrical components necessary to the amplifier's function. A number of issues could cause a circuit board to malfunction and require replacement. To replace the circuit board, you will need a small Phillips screwdriver and a replacement circuit board.



TOOLS:

- [Phillips 3 Screwdriver](#) (1)



PARTS:

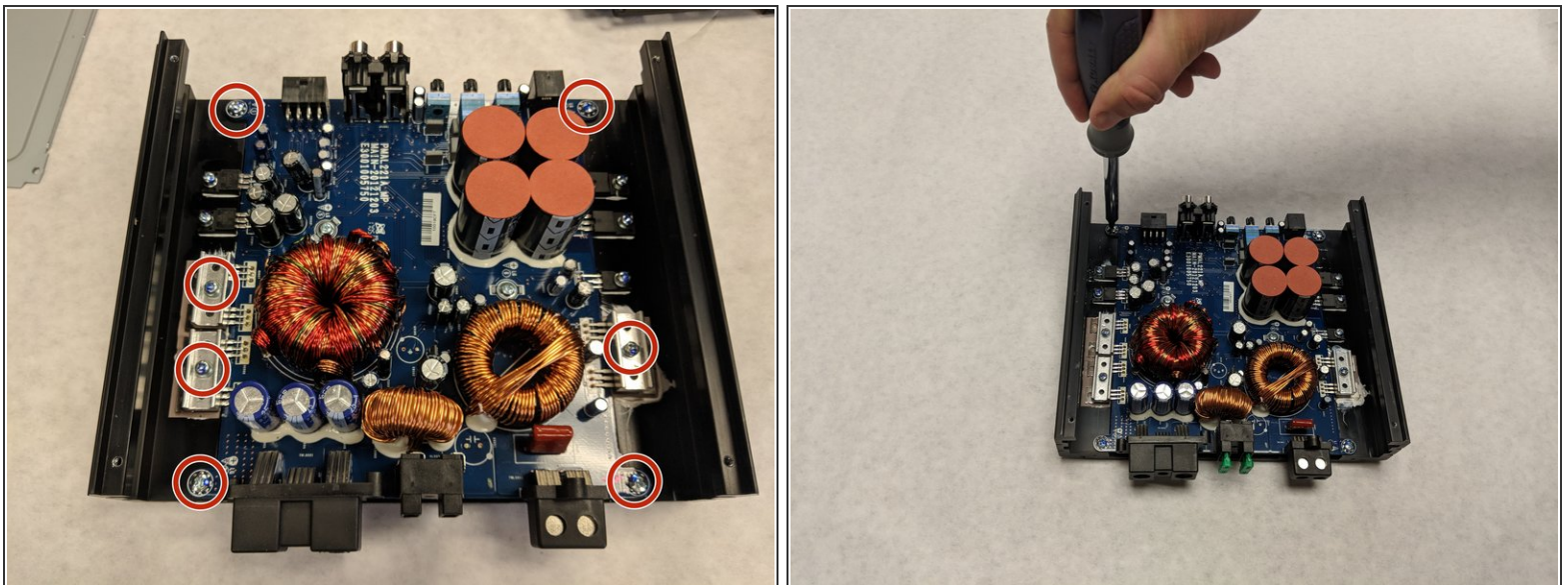
- [MRV-M500 Circuit Board](#) (1)

Step 1 — Circuit Board



- Remove all the Phillips 10.0mm and 7.0mm screws on the outside of the case.

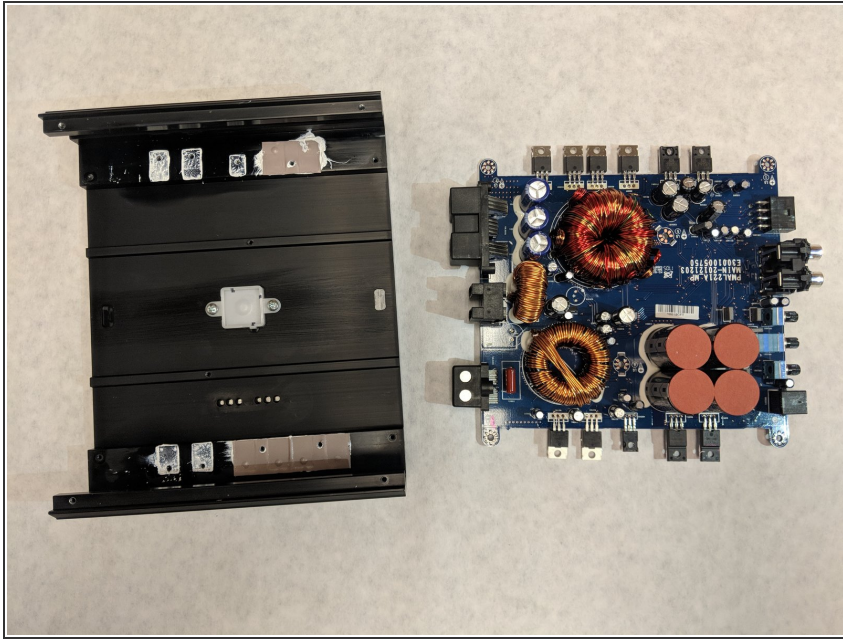
Step 2



- Remove all Phillips 7.5mm, 12.5mm, and 10.5mm screws holding the circuit board to the case.

⚠ Make sure the device has been powered off and disconnected from the power source for at least a day before touching the electronic components.

Step 3



- Remove the circuit board from the case.

To reassemble your device, follow these instructions in reverse order using the replacement circuit board.

This document was last generated on 2019-07-20 10:33:21 PM.