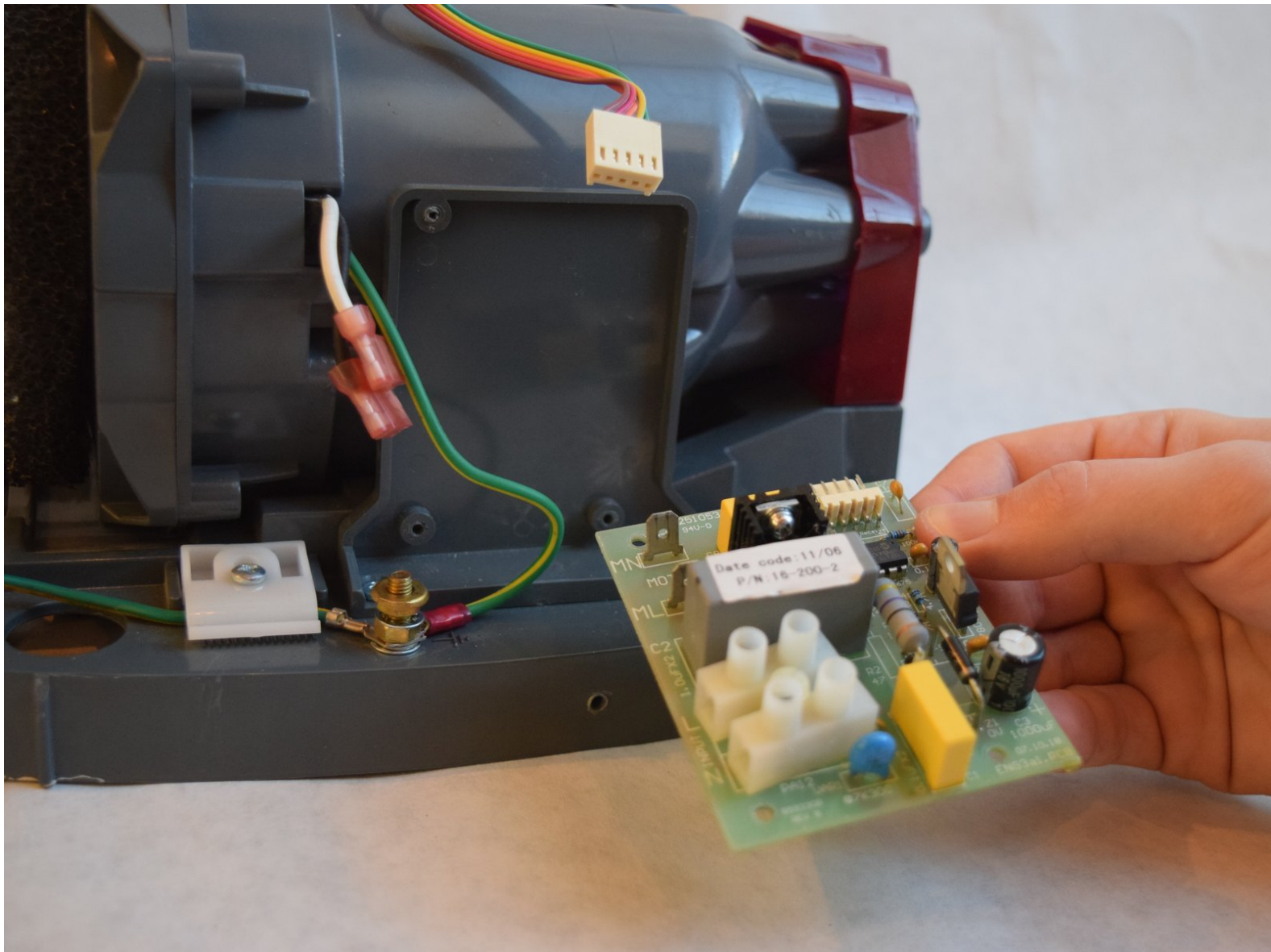




World Dryer Airforce J4-973A3 Server Board Replacement

How to replace a World Dryer Airforce J4-973A3 server board.

Written By: Blane Hirsh



INTRODUCTION

If the device does not start and the Sensor Lens is in good condition, then the Circuit Board may be faulty and need replacement.

TOOLS:

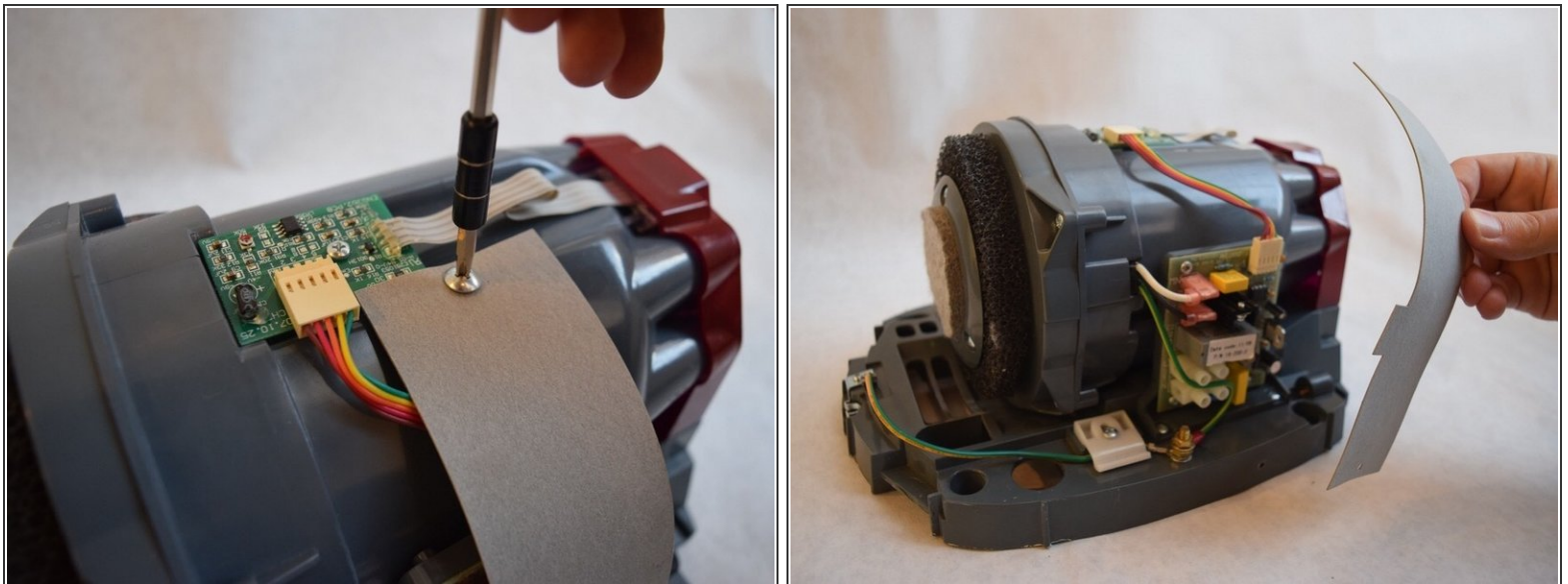
- [Tamper Resistant TORX Plus TR Bit](#) (1)
 - [Phillips #1 Screwdriver](#) (1)
 - [Phillips #2 Screwdriver](#) (1)
 - [iFixit Opening Tools](#) (1)
-

Step 1 — Server Board



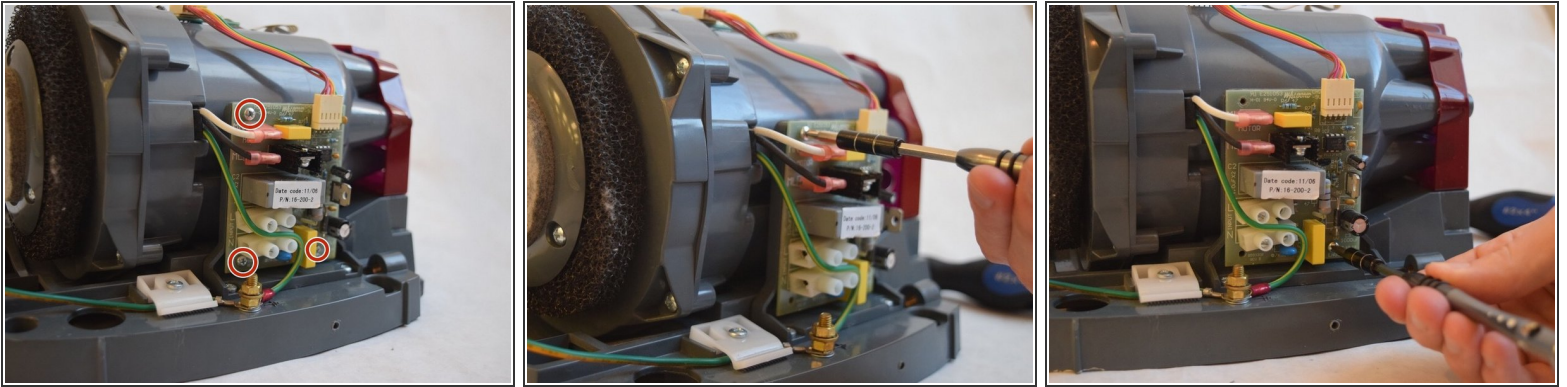
- Begin by removing both screws and the brushed metal casing. Simply lift up at the indicated area with your hand.
- ⓘ The INSTALL and REMOVE indicators may be incorrect, so exercise caution when removing the screws.

Step 2



- Remove both 3/8" Ph2 screws attached to the grey belt at the top and bottom.
- Lift the grey belt away. This gives access to the server board.

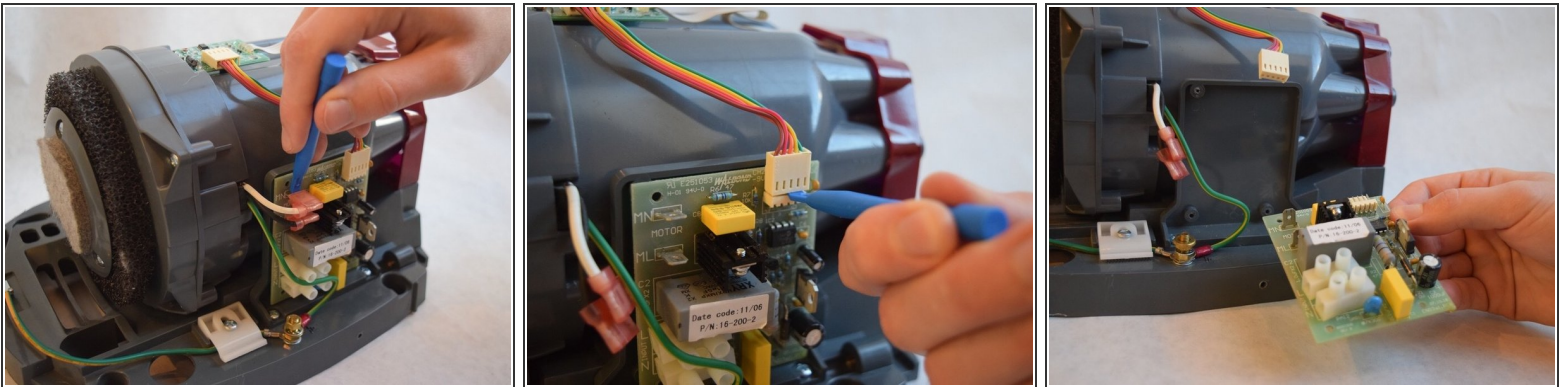
Step 3



- Remove all three 1/2" Ph1 screws connecting the server board to the device.

☑ During reassembly, install the screws before reattaching the wires.

Step 4



- Use a plastic opening tool to remove the two pink capped wires in the upper left corner of the server board.
- Use the same tool to dislodge the white capped ribbon bus with the multi-colored wires.
- After these steps, the server board should easily come off the side of the device.

To reassemble your device, follow these instructions in reverse order.

This document was last generated on 2018-12-07 05:18:37 PM.