



Portege Z830-S8302 Screen Replacement

How to replace a Toshiba Portege Z830-S8302 screen.

Written By: Tanner Krygier



INTRODUCTION

Make sure laptop is powered off when working on the device. Be cautious not to damage the new screen as it may be delicate. The plastic frame around the screen is flimsy and may crack if it is not handled with care.

TOOLS:

- [Spudger](#) (1)
 - [Phillips #000 Screwdriver](#) (1)
-

Step 1 — Screen



- Use a plastic opening tool to gently pry plastic frame from screen. Detach all housing clips around the perimeter of the screen.

Step 2



- Remove two 3mm screws with a Phillips #000 screwdriver.

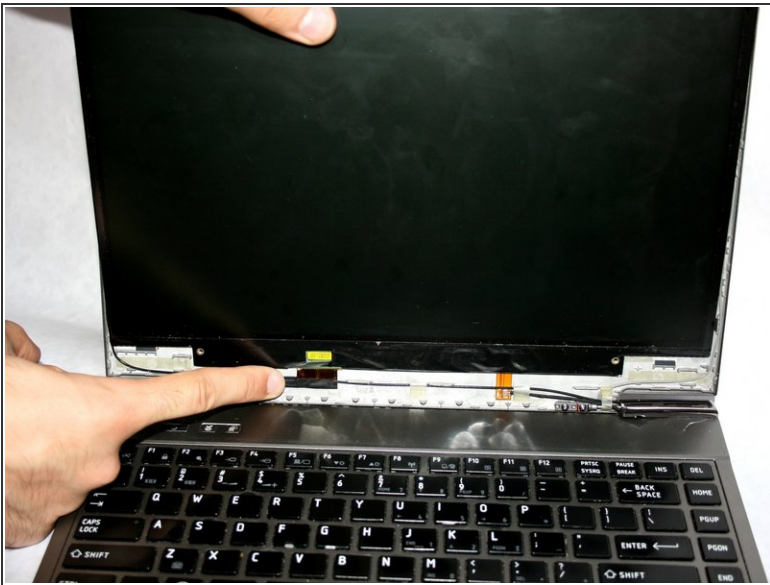
Step 3



- Wedge a blue plastic opening tool between the screen and the frame to free the screen.

⚠ Do not fully remove screen as it is still attached by connector cable on bottom

Step 4



- Disconnect the display cable with your fingers to fully remove the screen from the device.

To reassemble your device, follow these instructions in reverse order.

This document was last generated on 2019-07-23 07:36:10 PM.