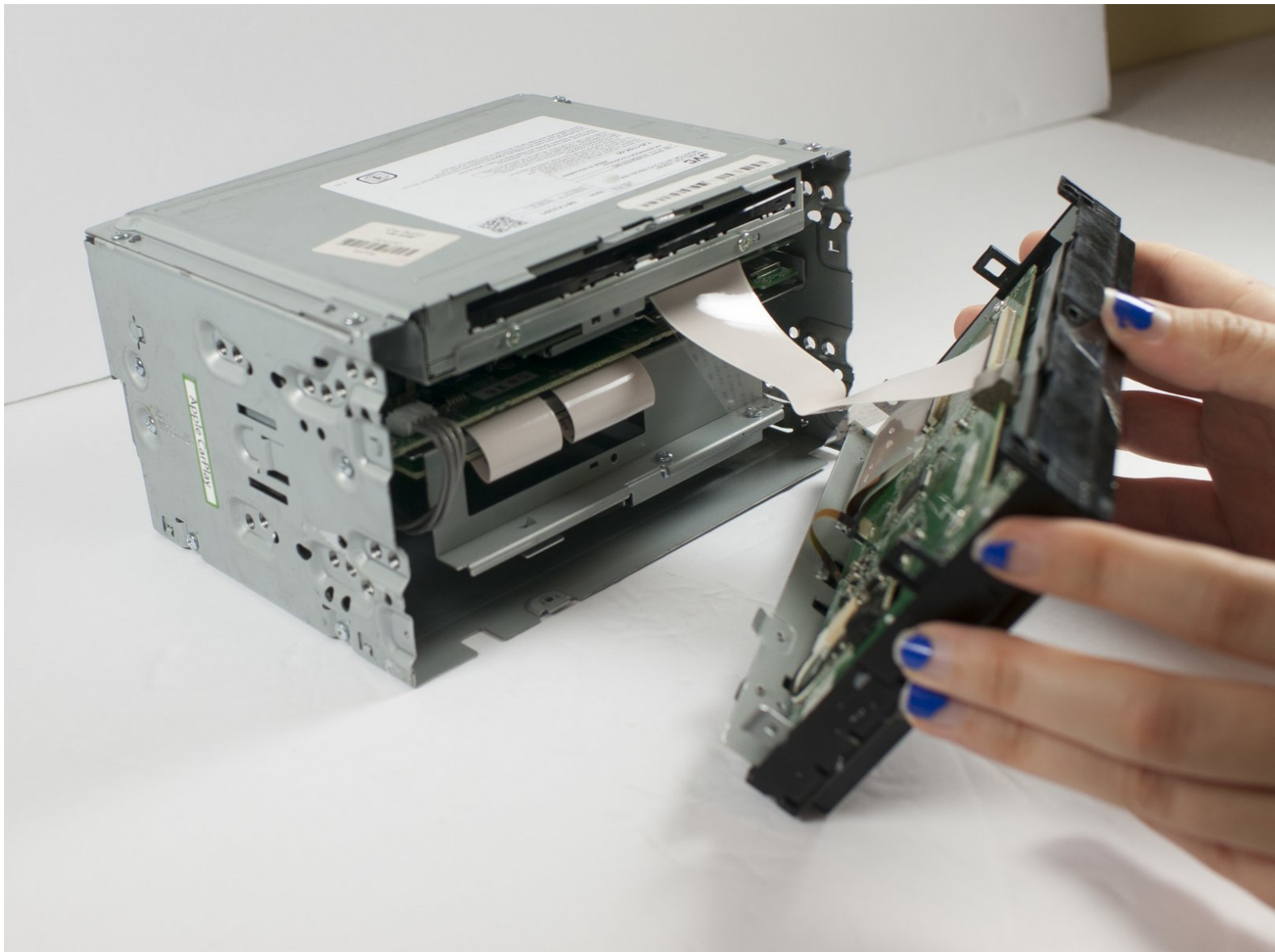




JVC KW-V820BT Front Panel Assembly Replacement

Remove and replace the Front Panel Assembly on the JVC KW-V820BT audio device

Written By: Marshall Andersen



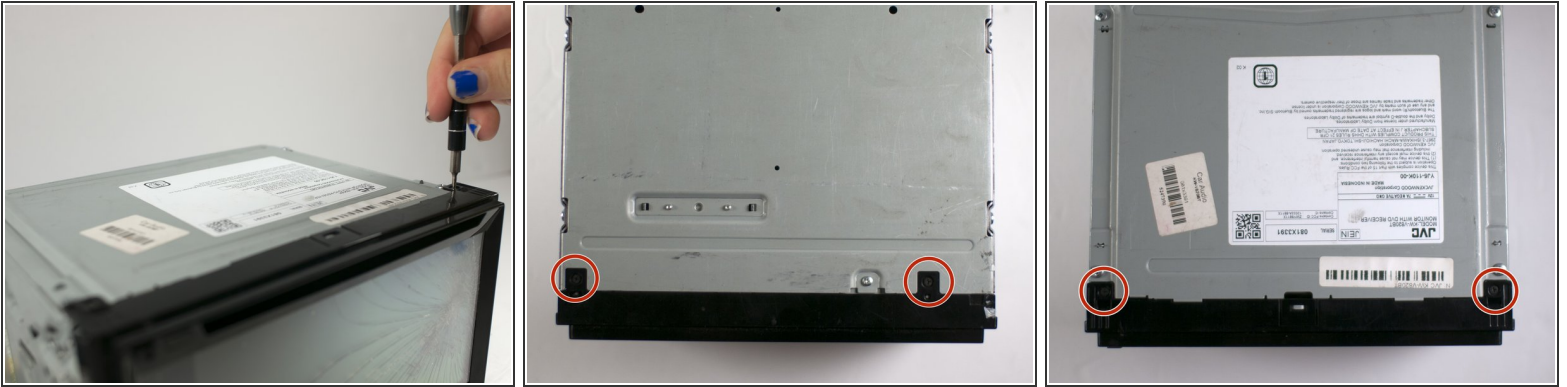
INTRODUCTION

The first step in the service of this device begins with the removal of the front panel assembly. This will allow access to other serviceable components within the device.

TOOLS:

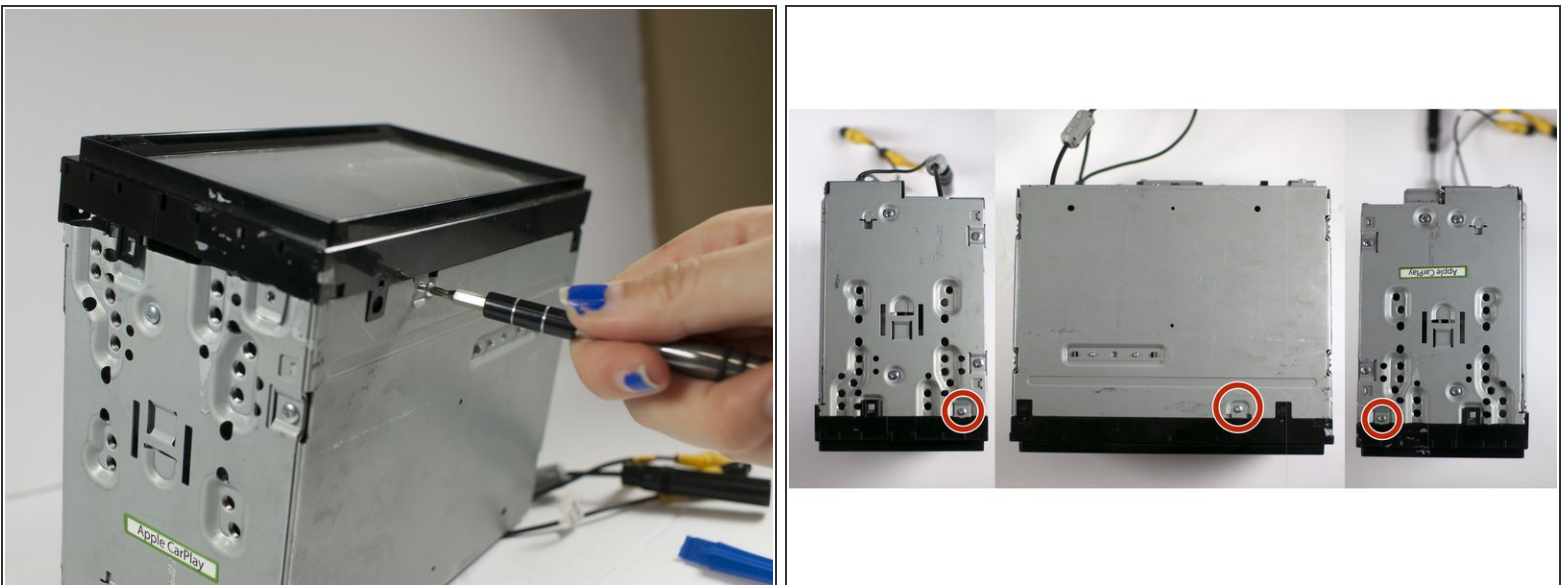
- [Phillips #00 Screwdriver](#) (1)
 - [Phillips #0 Screwdriver](#) (1)
 - [Spudger](#) (1)
 - [Metal Spudger](#) (1)
-

Step 1 — Front Panel Assembly



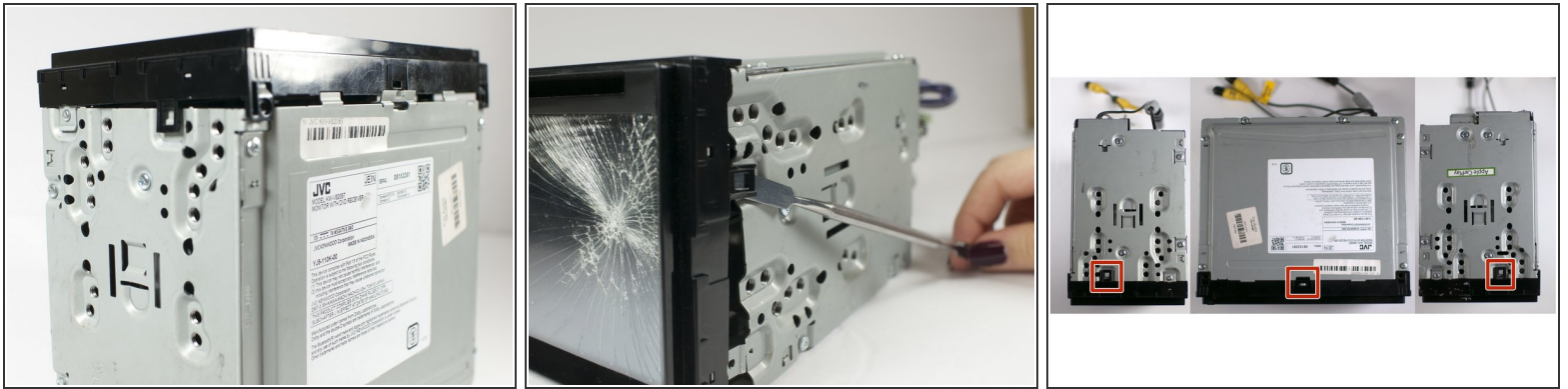
- Remove the four 1/8-inch black machine screws using a Phillips #00 screwdriver.

Step 2



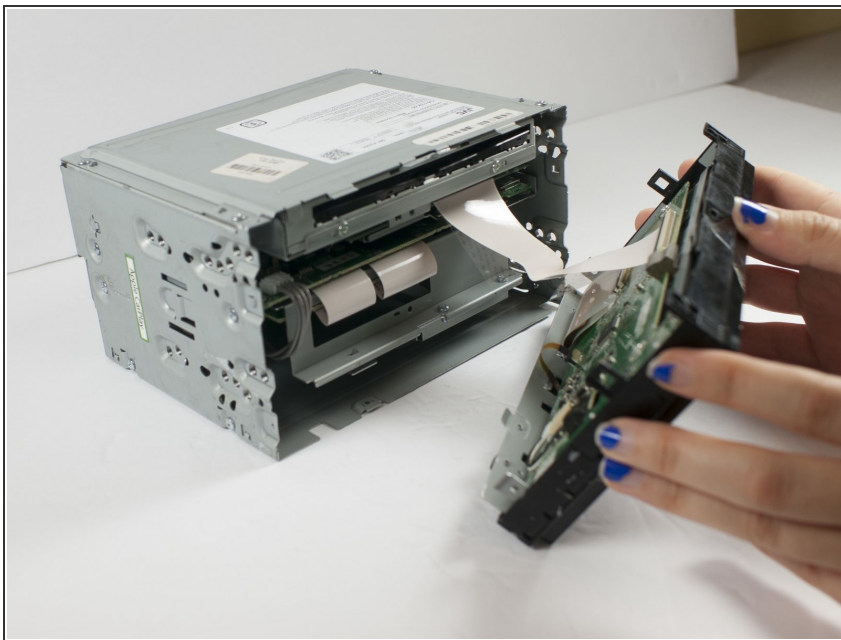
- Remove three steel-finish, pan-head, 1/64 x 3/16" machine screws identified in the photograph, using the Phillips #0 screwdriver.

Step 3



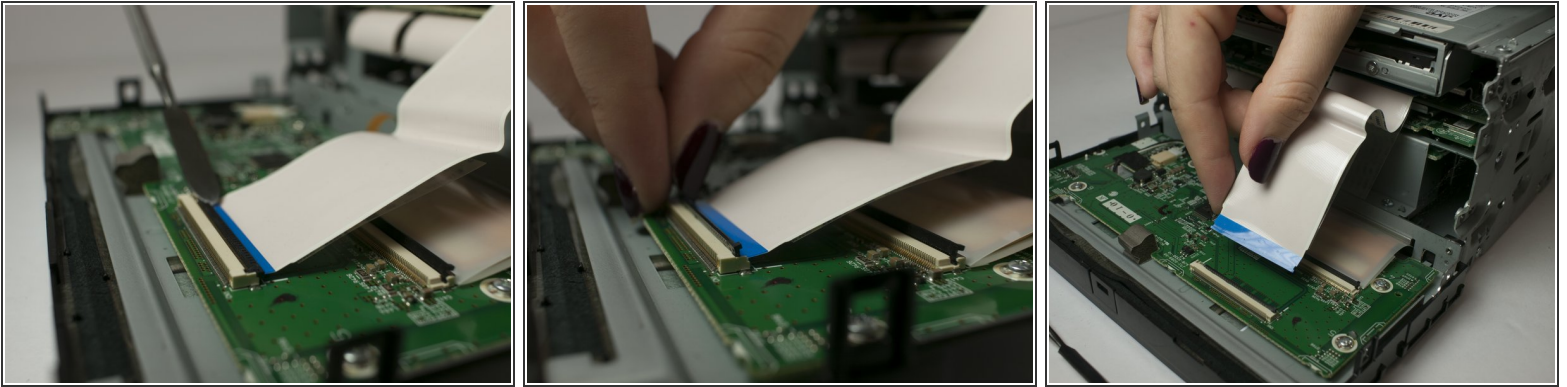
- Using your fingers and/or a metal spudger, gently release the plastic locking tabs of the front panel assembly from the steel enclosure while prying the front panel assembly away from the steel enclosure with your fingers.

Step 4




- Gently remove the front panel from the steel enclosure.

Step 5



- Gently separate the ribbon cable from from ZIF connector on the circuit board using a metal spudger.

 Be careful not to scratch or damage components or features of the circuit board with the metal spudger

To reassemble your device, follow these instructions in reverse order.