



Toshiba Satellite p875 s7200 Disk Drive Replacement

How to replace a Toshiba Satellite p875 s7200 disk drive.

Written By: Danny Amado



INTRODUCTION

If you need to replace the disk drive, follow this guide. The disk drive can be accessed from the bottom of the computer. To replace this part, you will need a Phillips 0 screw driver and a plastic opening tool.



TOOLS:

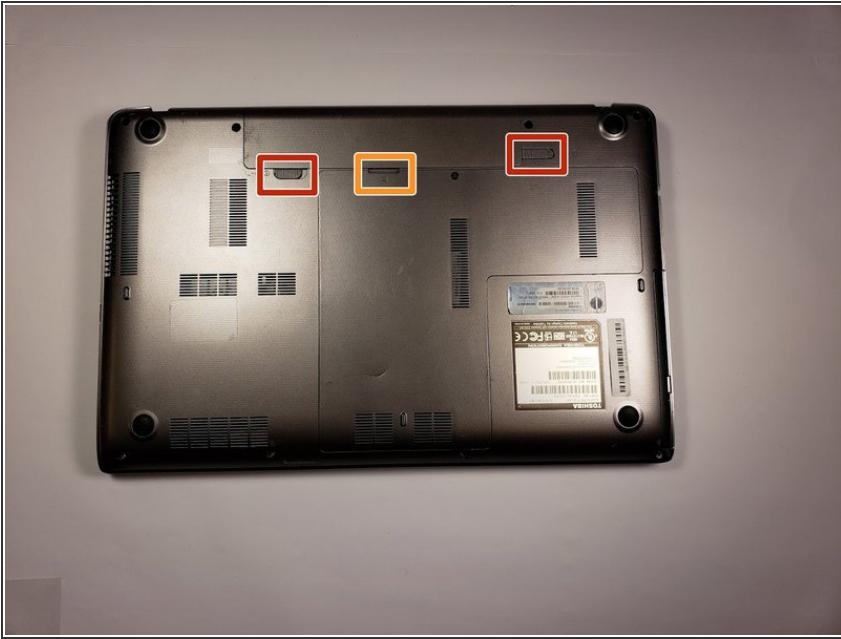
- [Phillips #0 Screwdriver](#) (1)
- [iFixit Opening Tools](#) (1)



PARTS:

- [Panasonic Disk Drive](#) (1)

Step 1 — Disk Drive



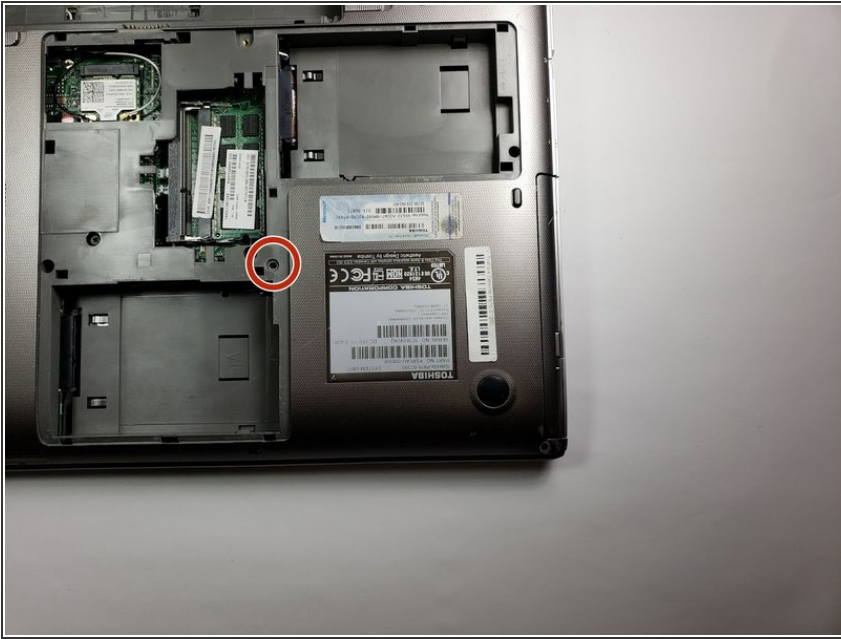
- ⓘ Remember to remove any disks from the disk drive
- Remove the battery by sliding the tabs to the left.
- Use the spudger to lift the battery out.

Step 2



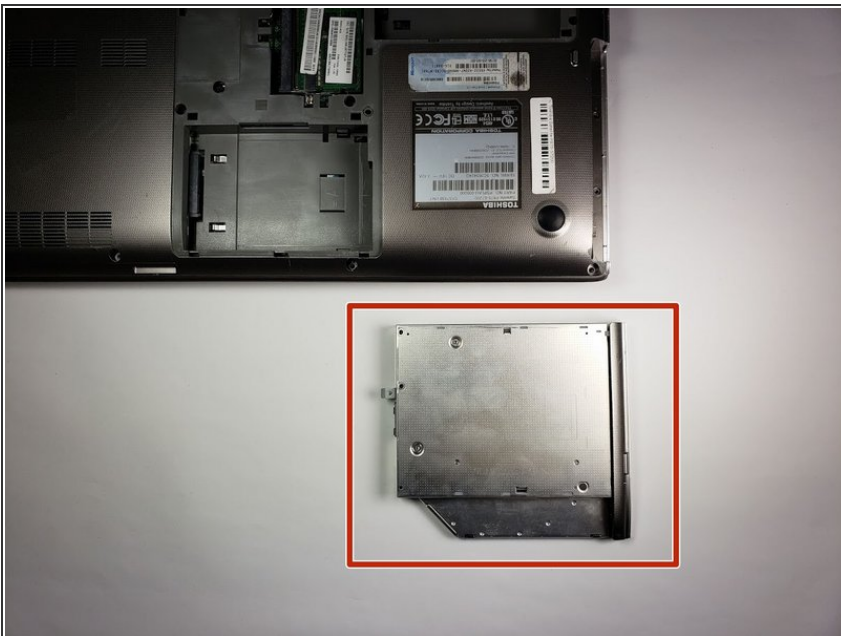
- Use the Phillips head screw driver to remove the screw holding the back plate on.
- Use the spudger to remove the back plate.

Step 3



- Use the Phillips head screw driver to remove the 6mm screw holding the disk drive in.

Step 4



- Removed Disk Drive.

To reassemble your device, follow these instructions in reverse order.

This document was last generated on 2019-07-22 02:31:03 PM.