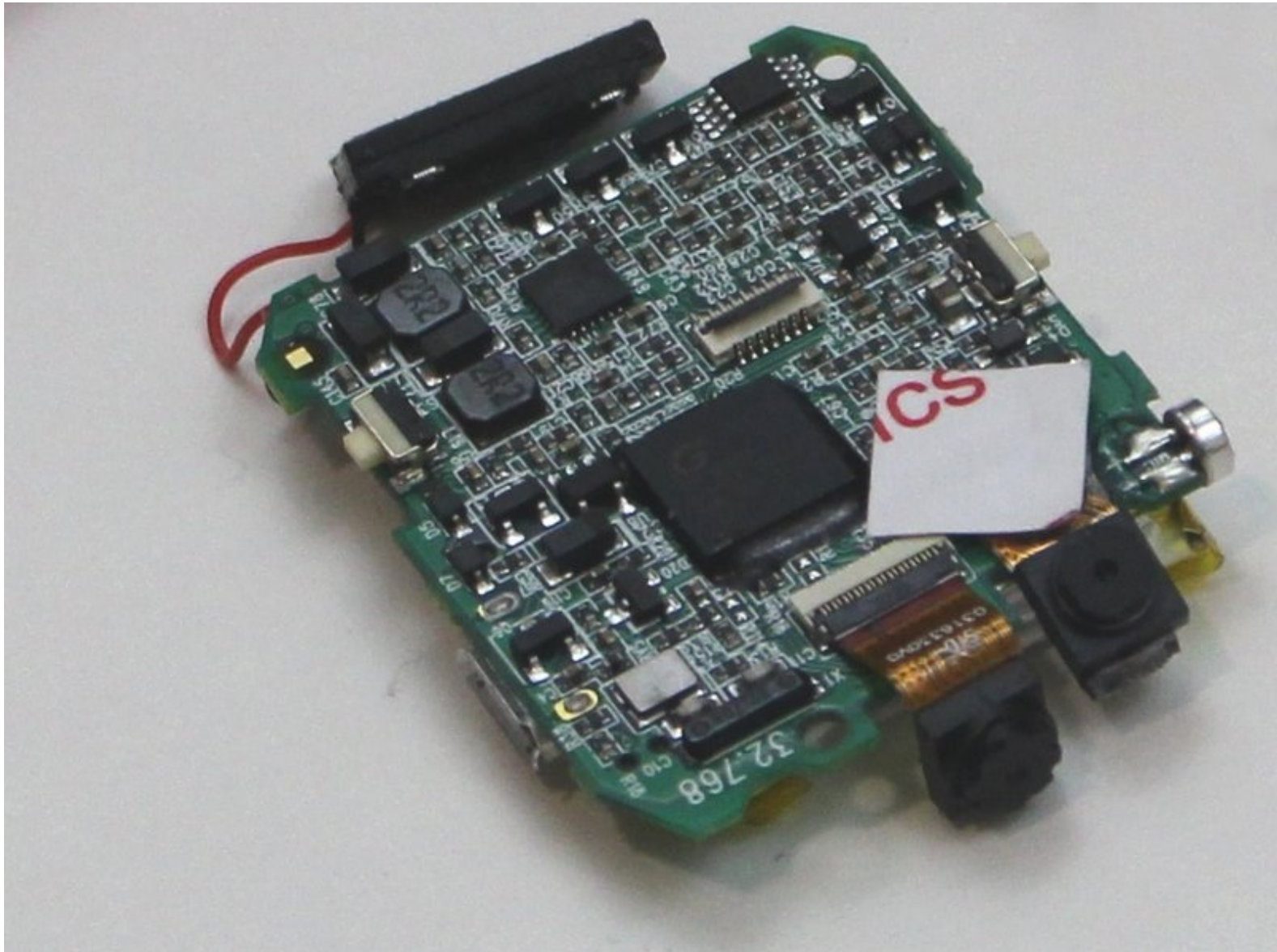




VTech Kidizoom Smartwatch DX2 Motherboard Replacement

How to replace a VTech Kidizoom Smartwatch DX2 motherboard.

Written By: Jessica Richard



INTRODUCTION

In order to remove the screen or the battery, the main board will have to be removed first. Follow this guide to set you on your way.

TOOLS:

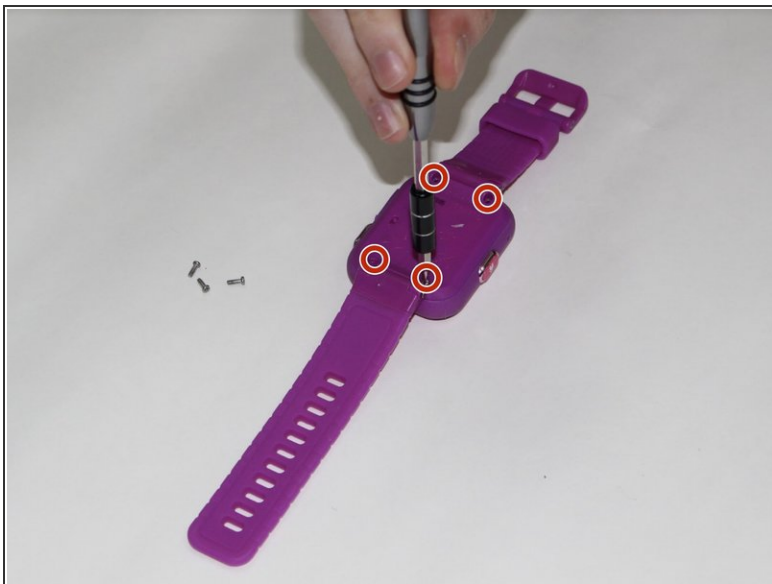
- [Phillips #00 Screwdriver](#) (1)
 - [Tweezers](#) (1)
-

Step 1 — Master Switch



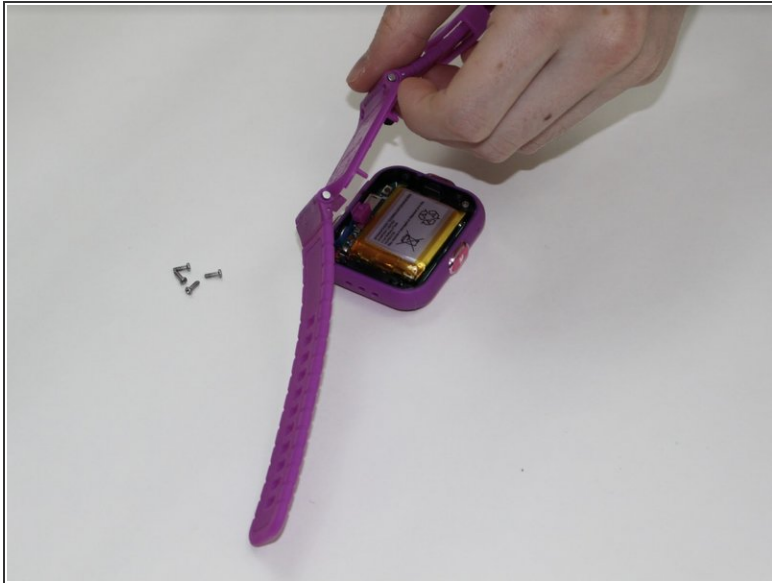
- Begin by flipping the watch over with its back facing upwards.

Step 2



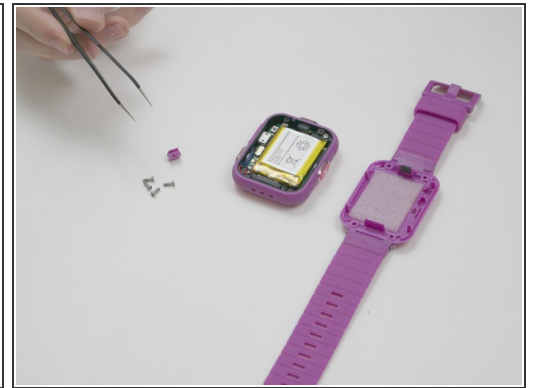
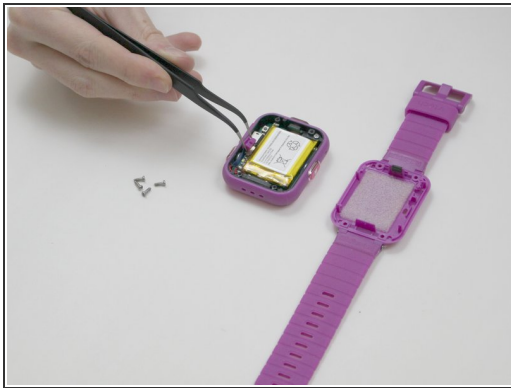
- Next, use the Phillips #00 screwdriver to unscrew the four 6.0 mm screws located in each corner of the watch to remove the backplate.

Step 3



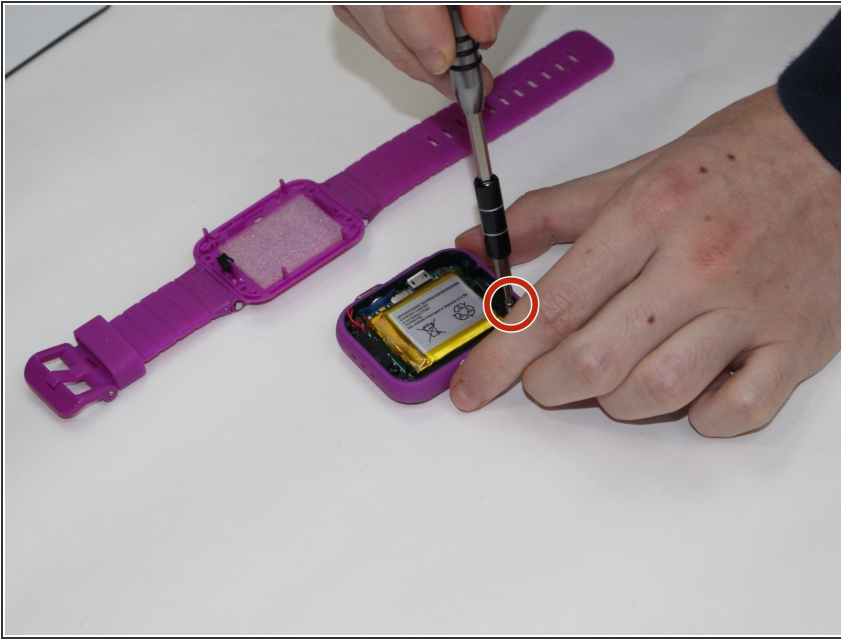
- Gently lift the backplate up to remove it.

Step 4



- After removing the backplate, lift the master switch up from the circuit board.

Step 5 — Motherboard



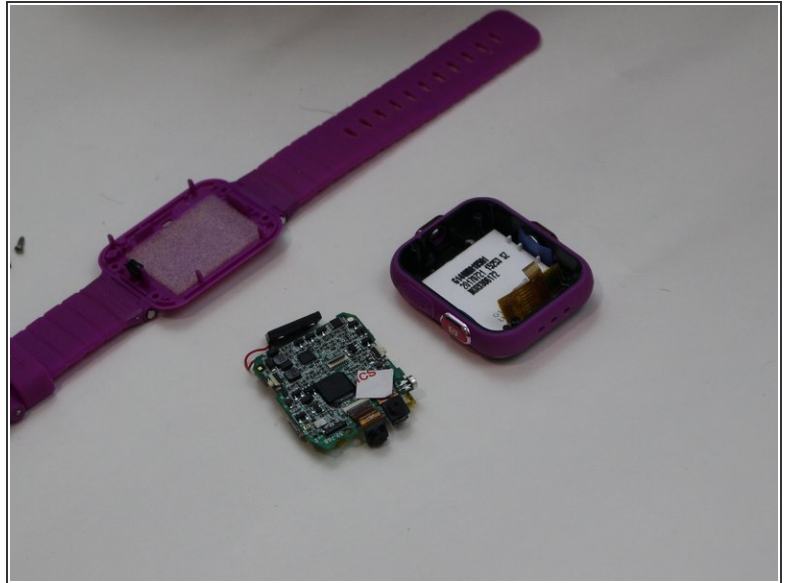
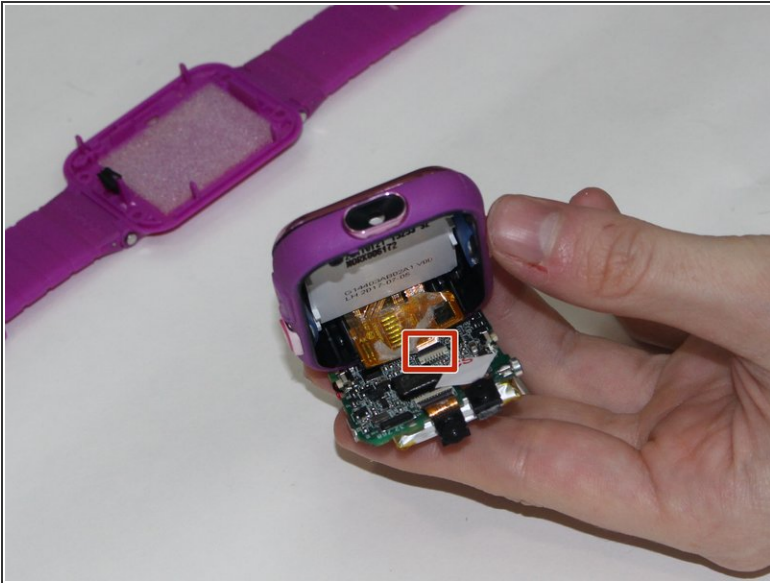
- Using a Phillips #00 screwdriver, remove the 0.6 mm screw.

Step 6



- Carefully remove the speaker from the case without disconnecting it from the motherboard.

Step 7



- Using the tweezers, carefully lift the bar holding the connection to the screen.
- Remove the motherboard from the device.

To reassemble your device, follow these instructions in reverse order.