



# Mac mini Late 2018 Logic Board Assembly Replacement

Prerequisite-only guide to slide the logic board and attached components out of the Mac mini's chassis.

Written By: Jeff Suovanen



---

## INTRODUCTION

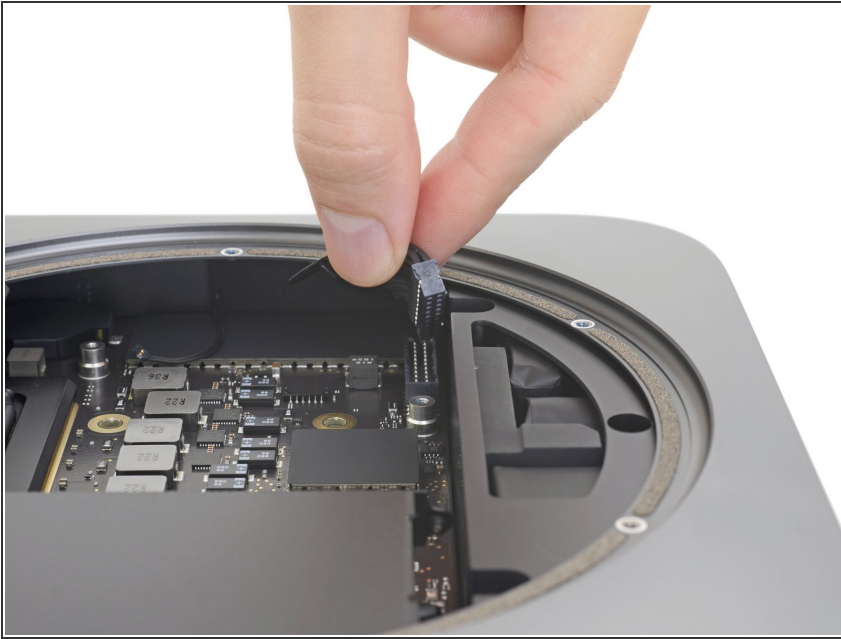
Prerequisite-only guide to slide the logic board and attached components out of the Mac mini's chassis.

---

### TOOLS:

- [T10 Torx Screwdriver](#) (1)
  - [TR6 Torx Security Screwdriver](#) (1)
  - [iFixit Opening Tools](#) (1)
  - [Spudger](#) (1)
  - [Tweezers](#) (1)
-

## Step 1 — Logic Board Assembly



- Grasp the power supply cable and lift to disconnect it from the logic board, wiggling as needed to loosen it up.

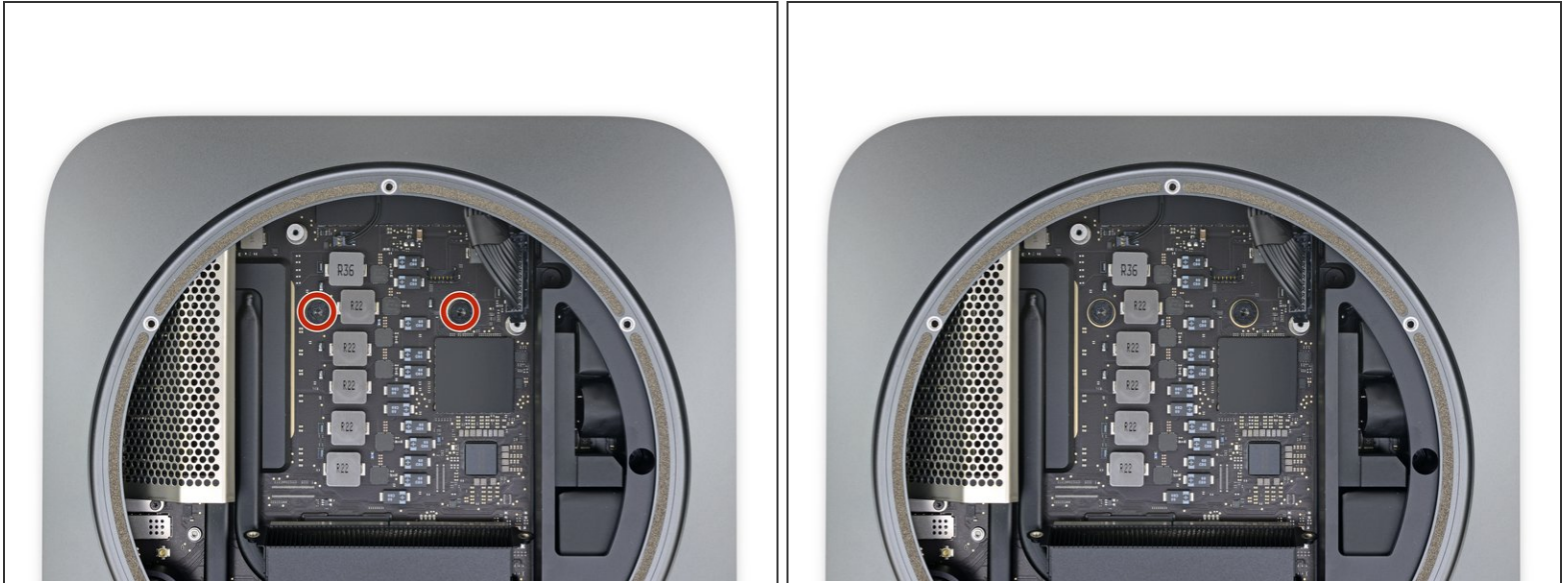
## Step 2



- Carefully lift the connector for the LED indicator light straight up to disconnect it from its socket on the logic board.

 Take care not to pry under the socket, or you may break it off the board.

### Step 3



- Use a T10 Torx driver to remove the two 7.5 mm screws securing the logic board.

### Step 4



**⚠** In this step, you'll push the logic board free from the clips holding it to the frame. **Push only where directed** or you may damage the fragile cooling fins.

- Place a thumb at each end of the exhaust vent, over the fan screw holes.
- Push firmly in the direction of the ports until the logic board unclips and begins to slide out of the Mac mini.

## Step 5



- Slide the logic board out of the case.
- ☑ When reinstalling the logic board, make sure to hold the thin [LED indicator light cable](#) out of the way so it doesn't get damaged.

To reassemble your device, follow these instructions in reverse order.