



# Huawei Pronto LTE Display Screen Assembly Replacement

If you're having trouble seeing things on your device, the display screen may need to be replaced.

Written By: Crystal Edwards



## INTRODUCTION

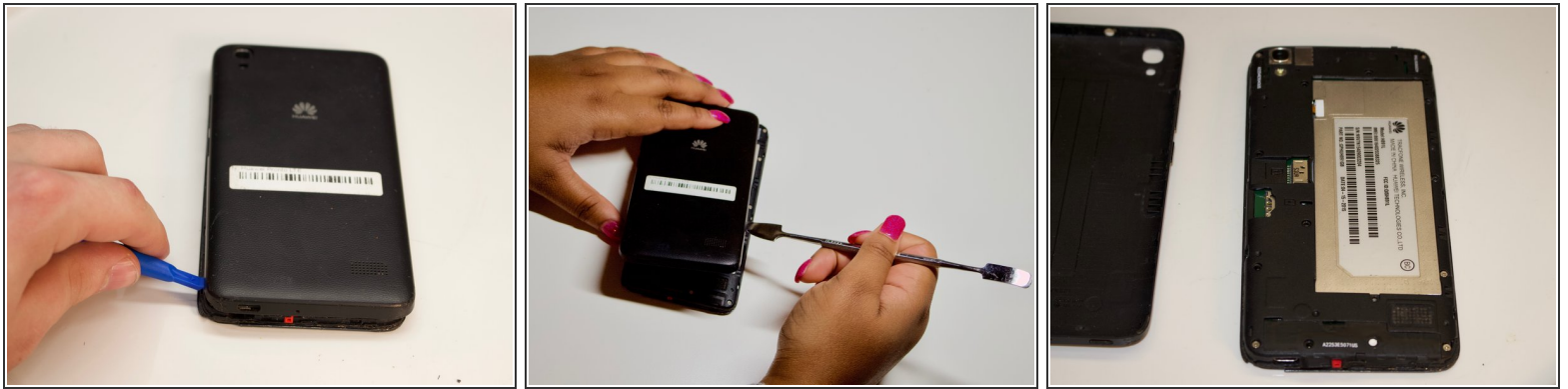
The display screen is a vital part of the device. Seeing what you're doing on your phone helps to navigate each move you make in the correct order.

---

### TOOLS:

- [iFixit Opening Tools](#) (1)
  - [JIS #000 Screwdriver](#) (1)
  - [#4 Spudger](#) (1)
  - [ESD Safe Tweezers Blunt Nose](#) (1)
  - [Metal Spudger](#) (1)
  - [Phillips #000 Screwdriver](#) (1)
-

## Step 1 — Battery



- Begin to lever up the back cover of your Huawei Pronto LTE, using an Opening Tool.
- ⓘ If you are experiencing difficulties with removing the cover, use the metal spudger.
- Once all corners of the cover are levered, gently lift the back cover off.

## Step 2



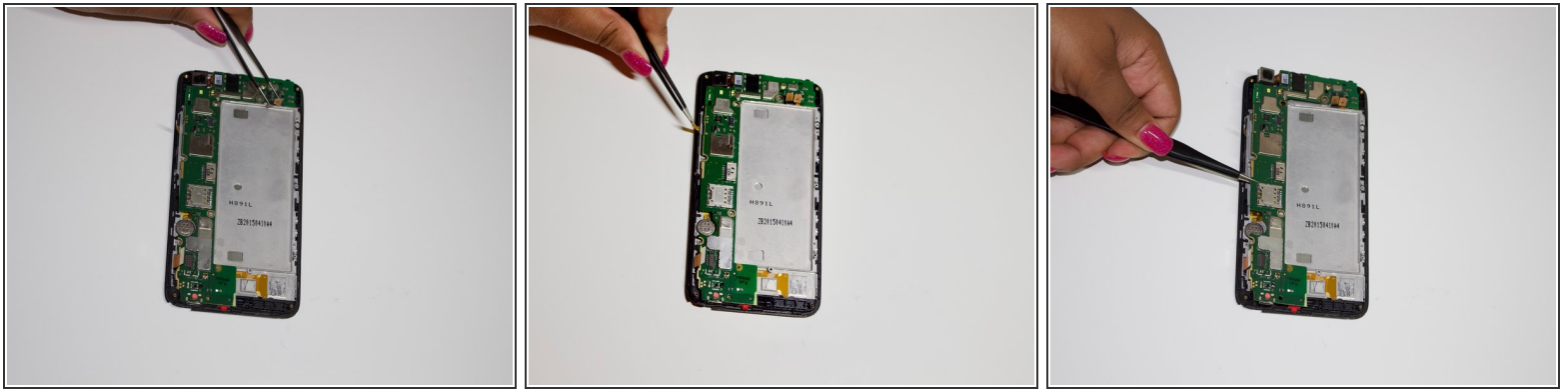
- Unscrew all 15 screws on the back of the phone using the #000 Phillips head screwdriver, and remove the rear frame.
- ⓘ Make sure to hold down the phone.
- Gently lift the inner cover using the metal spudger.


### Step 3



- Detach the yellow latches along the sides to remove the motherboard.

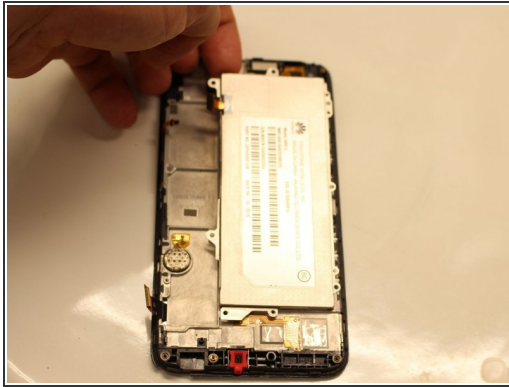
### Step 4



 Make sure all latches are detached and that there are no extra screws, to ensure safe removal of the motherboard.

- Gently remove the motherboard from the device with the tweezers.

## Step 5



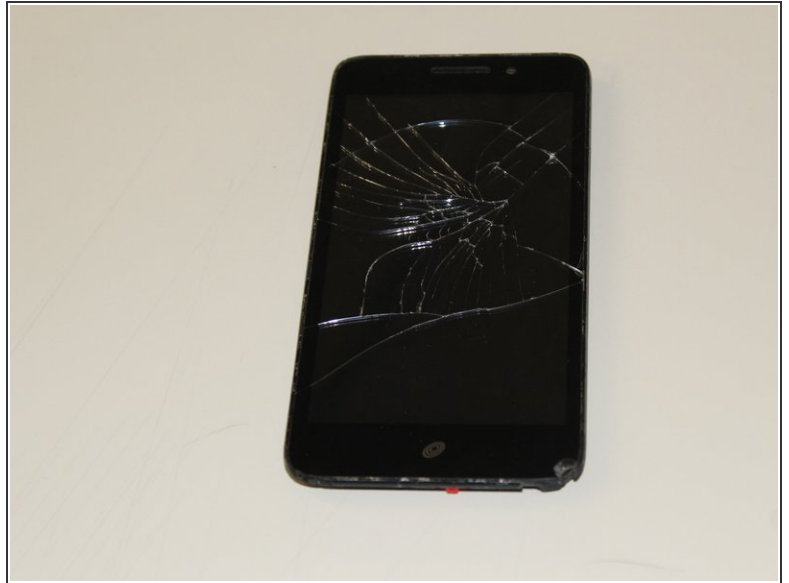
- Once the motherboard is removed there should be nothing in the way of the battery.
- Lift the battery from the top left corner.

## Step 6 — Screen Assembly



- Remove the motherboard. Refer to the Motherboard Replacement Guide.
- Remove the battery.

## Step 7



- Once the battery is removed the screen will be visible.

To reassemble your device, follow these instructions in reverse order.

This document was last generated on 2019-01-15 02:20:09 AM.