



HTC Surround SD Card Replacement

This guide will be created to help a user of the HTC 7 Surround remove and replace the SD card

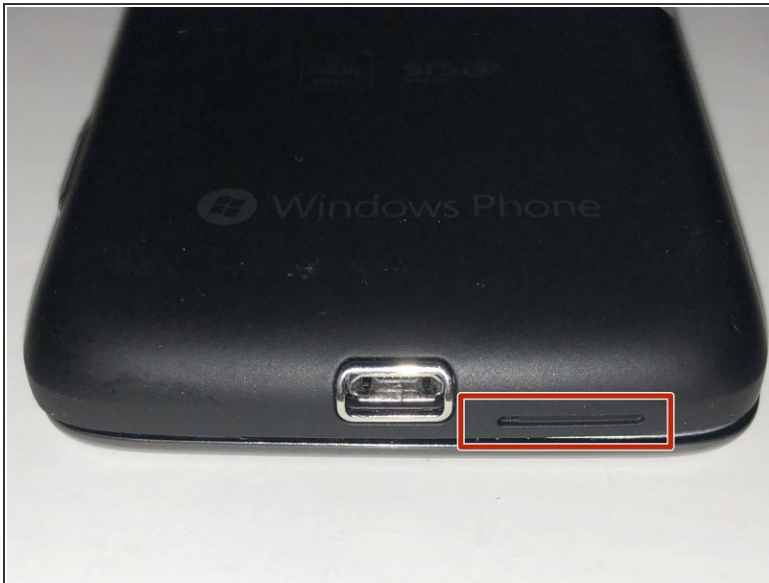
Written By: Michael Ronning



 **TOOLS:**

- [iFixit Opening Tools](#) (1)
 - [Phillips #00 Screwdriver](#) (1)
-

Step 1 — Back Case



- The first step in accessing the internal components of the HTC 7 Surround is to remove the back cover of the device.
- To remove the back cover, use the circled hole in the picture to lift up while holding the front of the device down.
- The back cover of the device should then come off.

Step 2



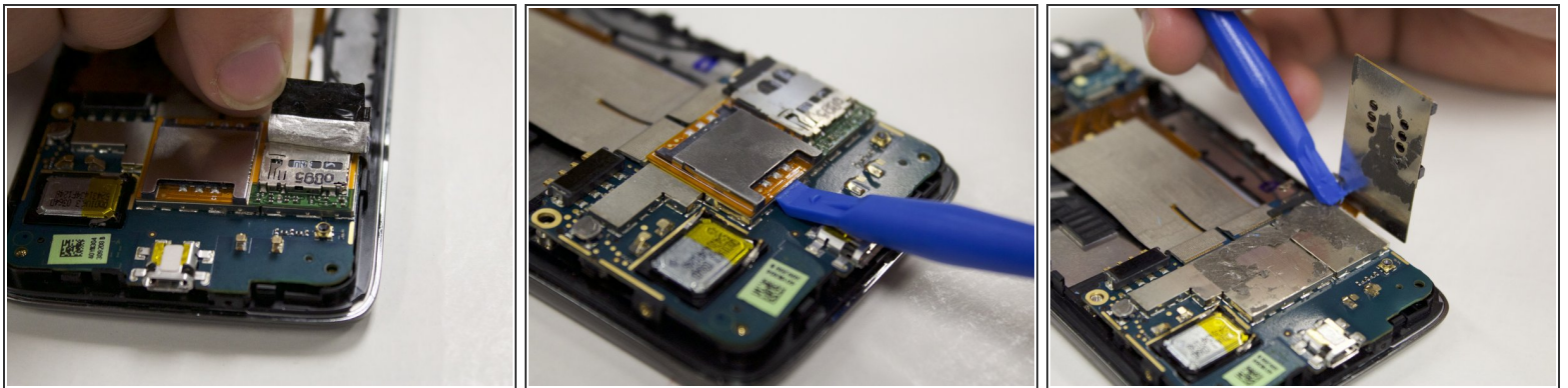
- Remove the circled screws with 0.0 Phillips head screw driver.

Step 3



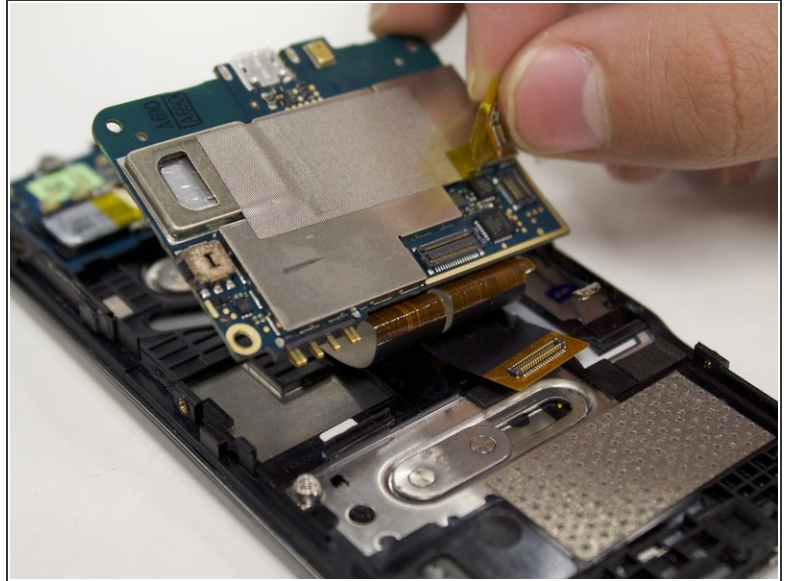
- After removing the screws insert the plastic opening tool between the back cover and the edge of the phone screen.

Step 4 — SD Card



- Look at the bottom right hand corner of the device and remove the silver tape covering the SD card slot with your fingers.
- Insert the plastic opening tool directly underneath the orange surface below the SIM card until its removed from the surface of the device.

Step 5



- To get to the attachment that the SD/SIM card is attached to; insert the plastic opening tool underneath the lower motherboard until it is removed from the bottom half of the device.
- You will notice the SD/SIM card is attached to the lower motherboard by a yellow piece of tape. Remove the tape from the back of motherboard with your fingers.

To reassemble your device, follow these instructions in reverse order.

This document was last generated on 2019-07-14 11:50:44 AM.