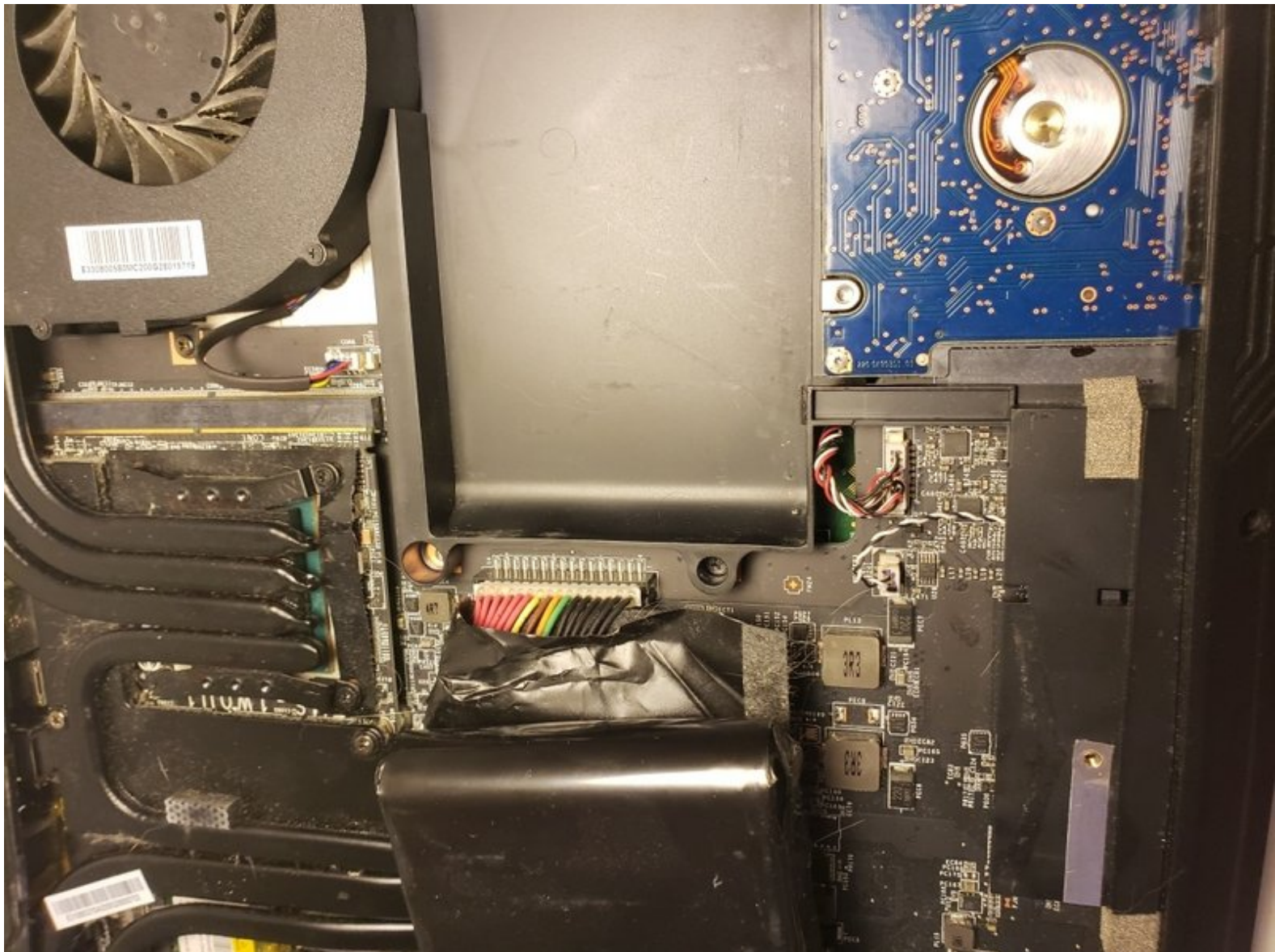




MSI GT62VR 6RD Dominator Battery Replacement

This guide will show you how to remove the battery inside the MSI GT62VR 6RD Dominator.

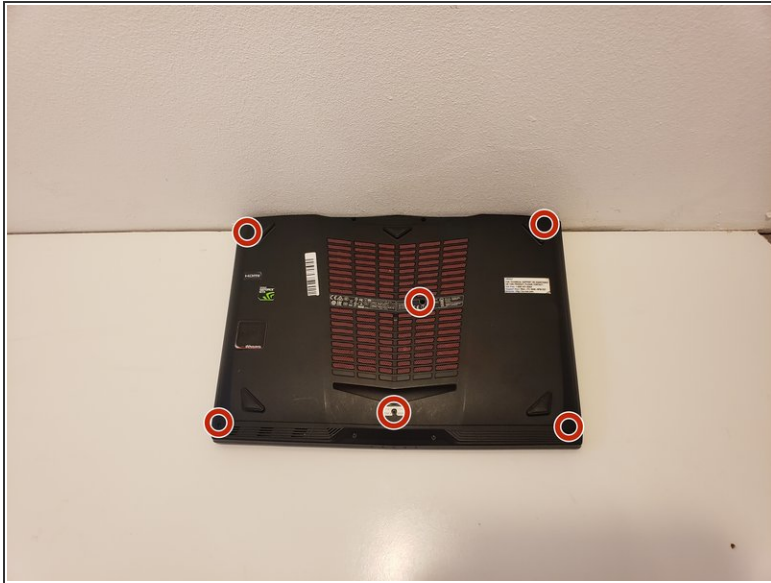
Written By: Rebekah Johnson



 **TOOLS:**

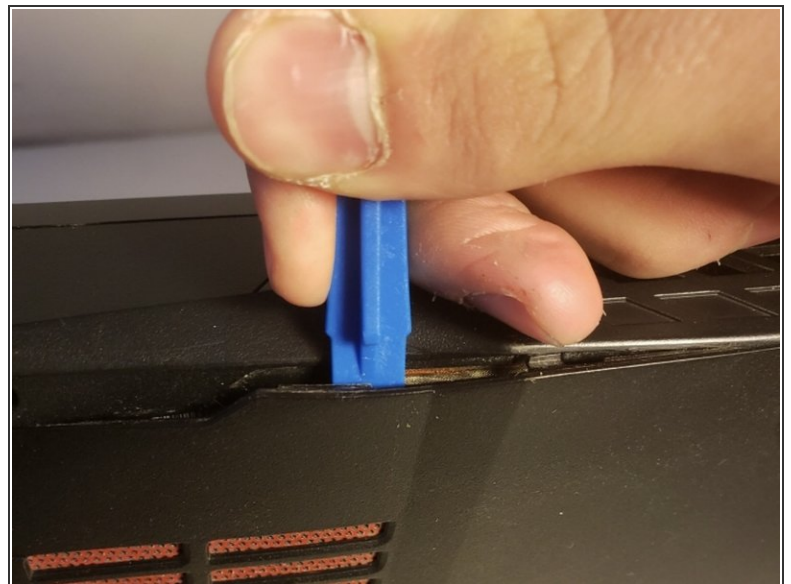
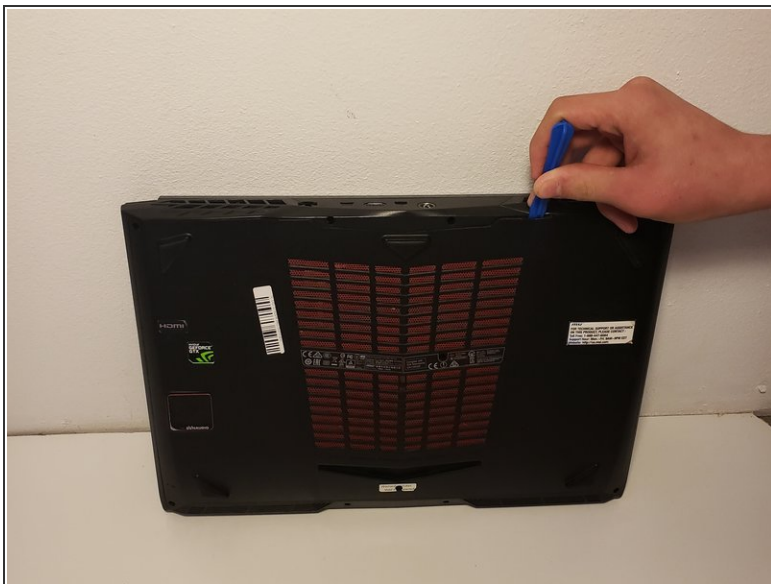
- [iFixit Opening Tools](#) (1)
 - [JIS #0 Screwdriver](#) (1)
-

Step 1 — Battery




- Remove the 6 screws on the bottom plate of the laptop using a 1.2mm JIS #0 screwdriver.

Step 2



- Insert the plastic opening tool into the back plate of the laptop and lightly pry it up.

 The laptop cover will break if it is being handled roughly.

- Slide the plastic opening tool around the laptop's edge gently, slowly popping off the clips securing it into the laptop.

Step 3



- Locate the battery.
- ⓘ The wires are located at the back end of the battery.
- Place your hands at the corners of the wires.
- Pull upward from the back end of the battery where the wires are located.

To reassemble your device, follow these instructions in reverse order.

This document was last generated on 2019-08-25 07:29:24 PM.