



MSI GT62VR 6RD Dominator Hard Drive Replacement

This guide will show you how to replace the hard drive in the MSI GT62VR 6RD Dominator.

Written By: Adrian Nelson



INTRODUCTION

This troubleshooting page will assist in the replacment of the hard drive of the MSI GT62VR 6RD Dominator.

This guide has no special requirements or hazards.



TOOLS:

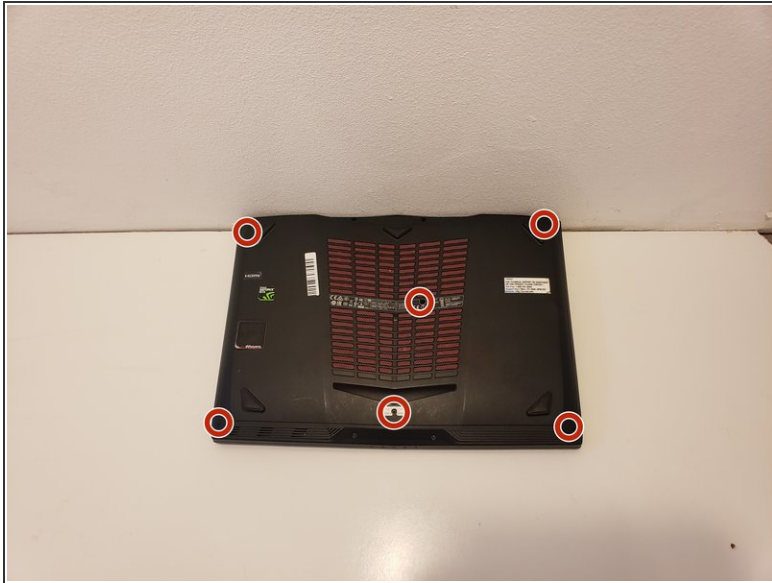
- [iFixit Opening Tools](#) (1)
- [JIS #0 Screwdriver](#) (1)



PARTS:

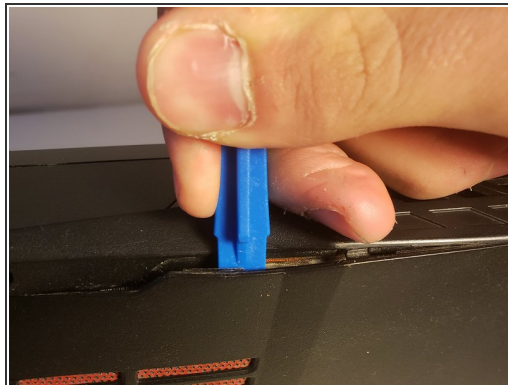
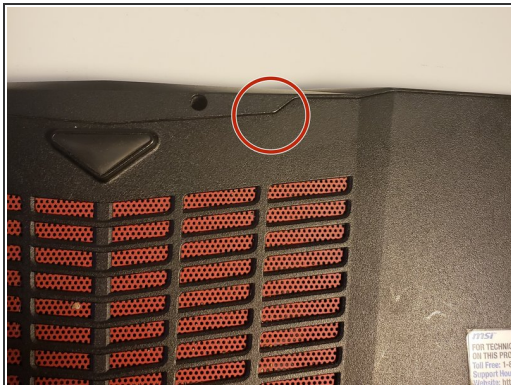
- [Hard Drive](#) (1)
-

Step 1 — Hard Drive



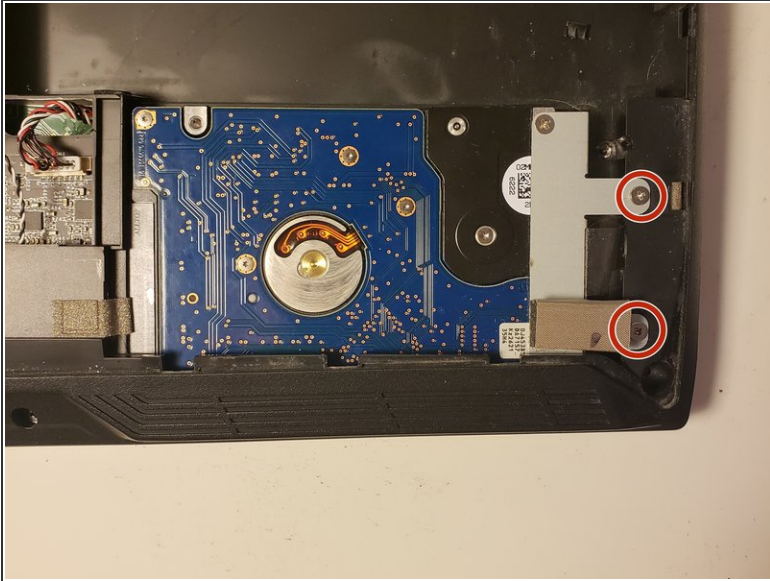
- Remove the six screws on the back plate of the laptop using a JIS #0 screwdriver.

Step 2



- Insert a plastic opening tool into the seam of the back cover
- Pry the cover up until clips release.
- Slide the plastic opening tool around the laptop until cover is fully removed.

Step 3



- Remove the two screws securing the hard drive to the laptop.
- Lightly lift the hard drive up by grasping the silver bracket that secures it to the laptop.
- Wiggle it backwards slowly until it is unplugged.
- Slide out from under the cover towards the battery.

To reassemble your device, follow these instructions in reverse order.

This document was last generated on 2019-01-15 05:20:05 AM.