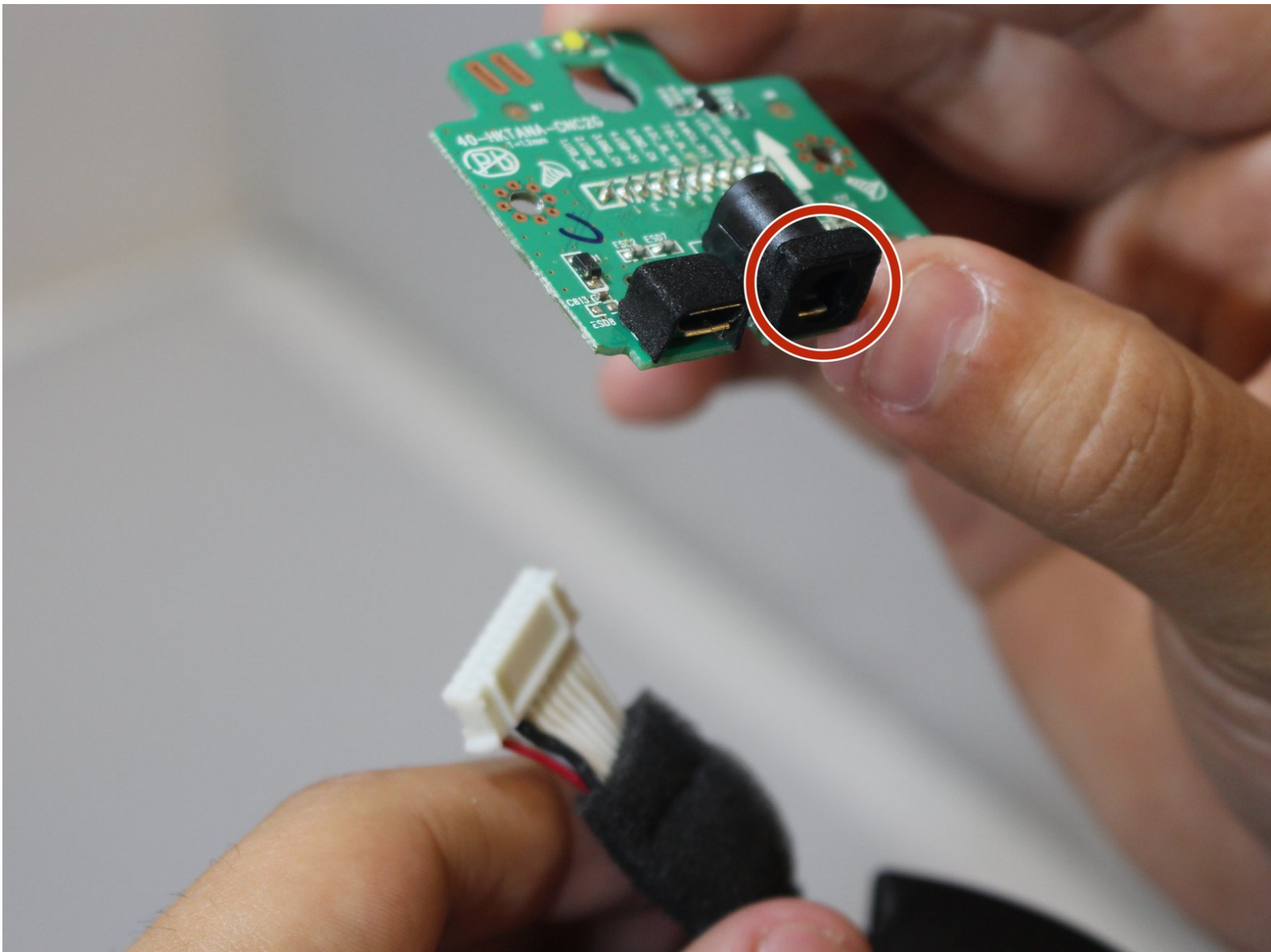




Harman Kardon Invoke Power Port Replacement

If your Invoke is experiencing problems with powering on after being plugged in, there could be an issue with a weak or broken power port.

Written By: Angel A. Grageda



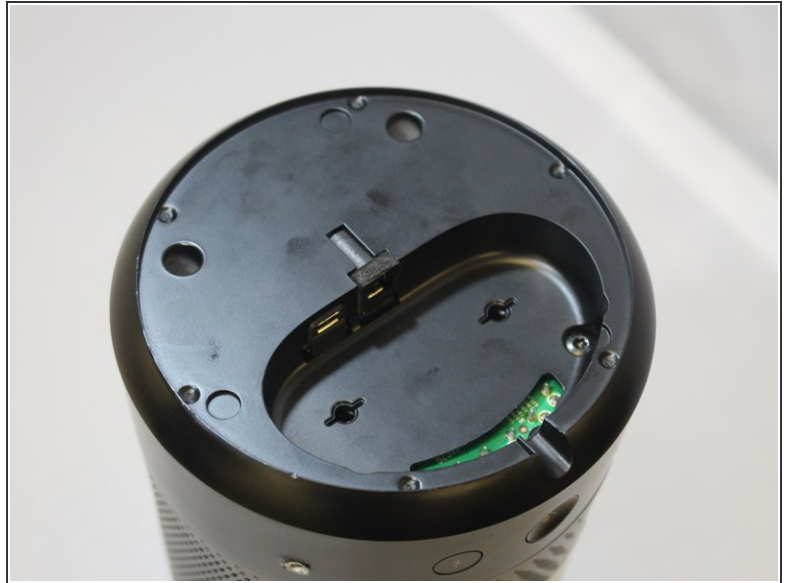
INTRODUCTION

If your Invoke is experiencing problems with powering on after being plugged in, there could be an issue with a weak or broken power port.

TOOLS:

- [T10 Torx Screwdriver](#) (1)
 - [Metal Spudger](#) (1)
-

Step 1 — Power Port



- Use a metal spudger to remove rubber bottom.

Step 2



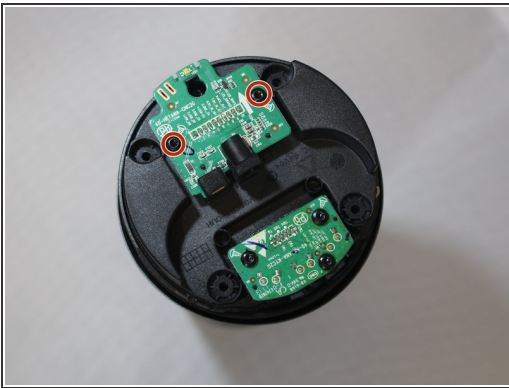
- Use a #10 Torx screwdriver to remove four 14 mm screws.

Step 3



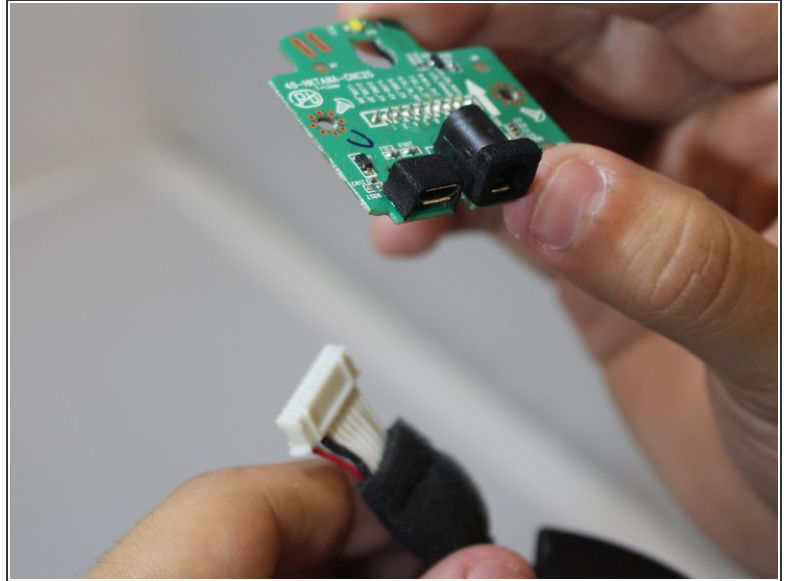
- Firm grip the bottom and wiggle upwards to remove bottom.

Step 4



- Use a #10 Torx screwdriver to remove two 10 mm screws from board attached to ports.
- Pull board up lightly.

Step 5



- Pull cable to disconnect board from device.
- ⓘ For replacement of service port, you will have to replace whole board that the port is attached to.

To reassemble your device, follow these instructions in reverse order.

This document was last generated on 2019-01-15 10:36:53 AM.